

NOTICE TO MARINERS



Notice of works associated with construction activities on Seagreen Offshore Wind Farm

Date of Issue	11/10/2021	Notice Number	27/2021
---------------	------------	---------------	---------

Seagreen Offshore Wind Farm – Export Cable Pre Lay Grapnel Run.

Contact Details for Marine Coordination and Fisheries Liaison

The following contact can provide more information if required:

Telephone Number, 24/7	+44 (0) 333 344 5255
Duty Marine Coordinator	seagreenmarinecoordination@sse.com
Address	Seagreen Wind Energy Ltd, Inchbraoch House Montrose Port Authority, South Quay Ferryden, Montrose, Angus DD10 9SL.

Fisheries liaison is coordinated by Brown and May Marine Ltd. For all fisheries enquiries, John Watt is primary contact:

Telephone Number	+44 (0) 1379872144
Mobile number	+44 (0) 7590 880746
Email	John.Watt@Brownmay.com
Address	Brown and May Marine Progress Way Mid Suffolk Business Park Eye, Suffolk IP23 7HU

1. Area of planned activity.

A pre lay grapnel run will be conducted on each of the three Seagreen offshore wind farm export cable routes. These grapnel runs will be conducted within the export cable corridor between the export cable landfall site at Carnoustie, Angus and the offshore sub-station platform location within the Seagreen site boundary. The Seagreen Export cable corridor is shown below in fig 1.

NOTICE TO MARINERS

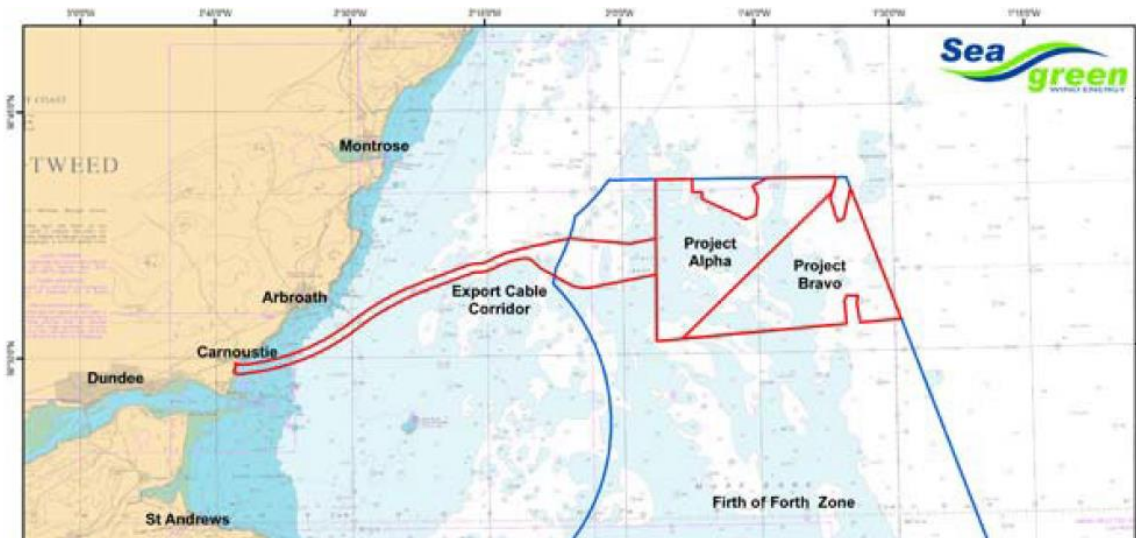


Fig 1 – Export cable corridor.

2. Activity Description.

On behalf of Seagreen Wind Energy Ltd, Nexans AS will conduct pre lay grapnel runs along each of the three export cable routes between the cable landfall site at Carnoustie, Angus and the offshore sub-station platform location within the Seagreen site boundary as shown in fig 1.

The PLGR vessel, Havila Phoenix is expected at site on or around the 16th of October with operations expected to be completed within six days weather conditions permitting.

The pre-lay grapnel runs are required to identify and remove, where possible, any obstructions to export cable lay and burial operations. Any debris will be brought ashore for disposal.

The pre-lay grapnel run train, shown below in fig 2 will be deployed to the seabed using the vessels' crane and will be monitored via transponder and can be further monitored using a remotely operated vehicle.

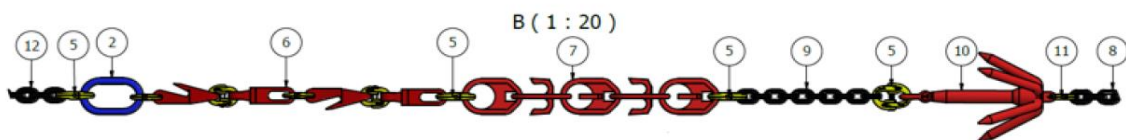


Fig 2 – PLGR train.

During this operation two turn-point anchors will be wet stored within the export cable corridor in the vicinity of the offshore sub-station platform location. These turn point anchors will be repositioned at a later date and used during export cable pull in works at the offshore sub station platform.

The turn point anchors will be wet stowed and later deployed in the positions indicated in fig 4, coordinates are shown in table 1. These turn point anchors will then be repositioned accordingly for each subsequent export cable pull-in operation. An example of a turn point anchor is shown below in fig 3.

NOTICE TO MARINERS

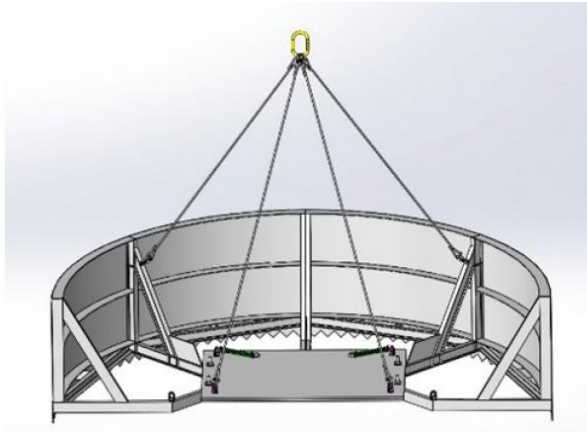


Fig 3 – Turn point anchor.

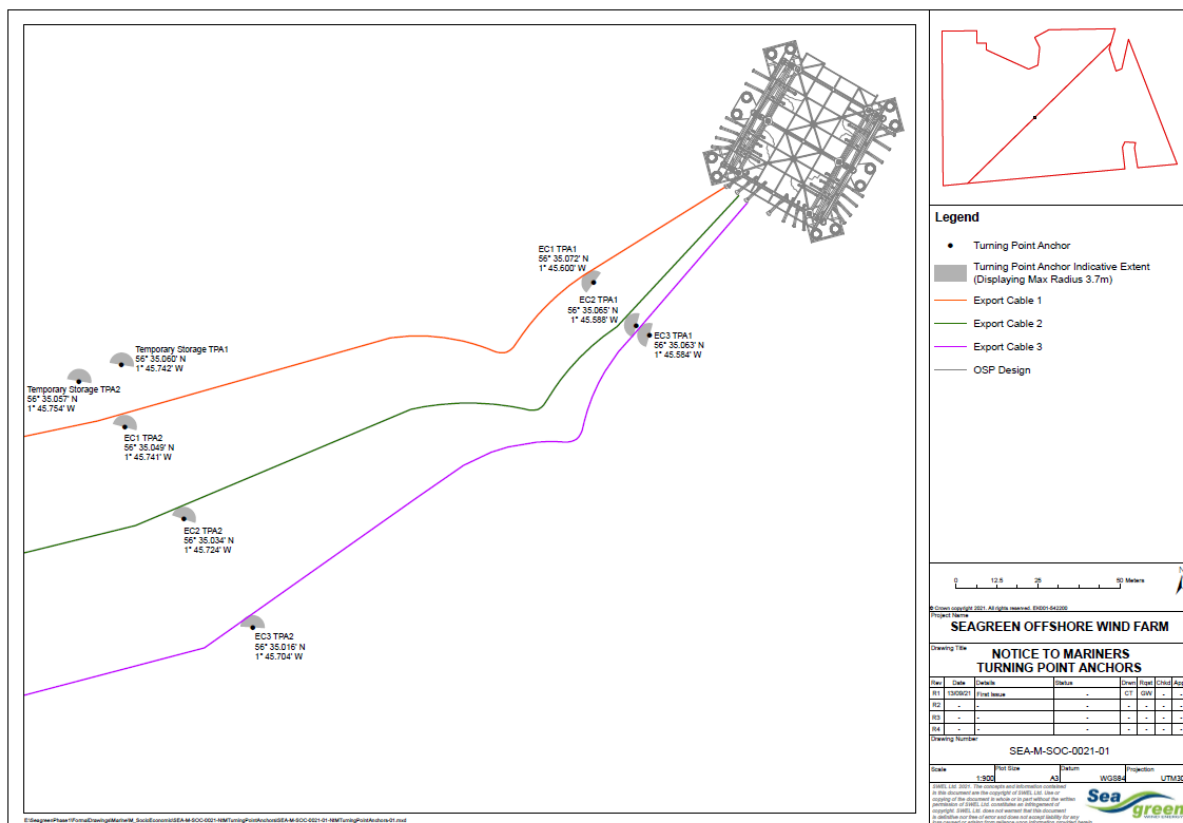


Fig 4 – Turn point anchor wet-stow and deployment positions.

Turn point Anchors.	Latitude (DDM WGS 84)	Longitude (DDM WGS 84)
Temporary storage – TPA1	56° 35.060' N	1° 45.742' W
Temporary storage – TPA2	56° 35.057' N	1° 45.754' W
Export cable 1 – TPA 1	56° 35.072' N	1° 45.600' W
Export cable 1 – TPA 2	56° 35.049' N	1° 45.741' W
Export cable 2 – TPA 1	56° 35.065' N	1° 45.588' W
Export cable 2 – TPA 2	56° 35.034' N	1° 45.724' W
Export cable 3 – TPA 1	56° 35.063' N	1° 45.584' W
Export cable 3 – TPA 2	56° 35.016' N	1° 45.704' W

Table 1 – Turn point anchor wet-stow and deployment coordinates.

NOTICE TO MARINERS

3. Vessel associated with this activity.

Vessel Name – Havila Phoenix	
General Description and Dimensions:	Multi Purpose Offshore Vessel, 127.4m LOA, 23.5m beam, 5.8m draught
Call Sign:	LAMQ8
MMSI:	257721000
Satellite communications details	Inmarsat C – +881 677 771 113
Direct Bridge/ Masters Number	0047 23 67 78 80 0047 97 46 17 69
Onshore Representative:	Geir Korstrad, Nexans AS 0047 95 02 06 34



4. General Safety Advice

The Havila Phoenix will exhibit appropriate lights and shapes prescribed by the International Regulations for Preventing Collisions at Sea, relative to their operations. The vessel will also transmit an Automatic Identification System (AIS) message.

It is requested all vessels give the Havila Phoenix a wide berth at all times when engaged in PLGR operations.

MARINERS ARE REMINDED to navigate with caution and keep continued watch on VHF Ch.70/16 when navigating the area.

5. Distribution List

A central list of recipients is maintained by the Marine Coordinator; if you are not the appropriate recipient of these notices, or do not wish to receive the notices in the future, please contact us at the address shown in this notice.