

# NOTICE TO MARINERS



## Notice of works associated with construction activities on Seagreen Offshore Wind Farm

Date of Issue	06/04/2022	Notice Number	30/2021 Rev 2
---------------	------------	---------------	---------------

### Seagreen Offshore Wind Farm – Inter Array Cable Installation Revision 2.

#### Contact Details for Marine Coordination and Fisheries Liaison

The following contact can provide more information if required:

Telephone Number, 24/7	+44 (0) 333 344 5255
Duty Marine Coordinator	seagreenmarinecoordination@sse.com
Address	Seagreen Wind Energy Ltd, Inchbraoch House Montrose Port Authority, South Quay Ferryden, Montrose, Angus DD10 9SL.

Fisheries liaison is coordinated by Brown and May Marine Ltd. For all fisheries enquiries, John Watt is primary contact:

Telephone Number	+44 (0) 1379872144
Mobile number	+44 (0) 7590 880746
Email	John.Watt@Brownmay.com
Address	Brown and May Marine Progress Way Mid Suffolk Business Park Eye, Suffolk IP23 7HU

#### 1. Area of planned activity.

Inter-array cables will be installed between the wind turbine foundation structures and the offshore sub-station platform within the boundary of the Seagreen Offshore Wind Farm. Details of the Seagreen development site including coordinates are shown below in table 1 and fig 1.

# NOTICE TO MARINERS

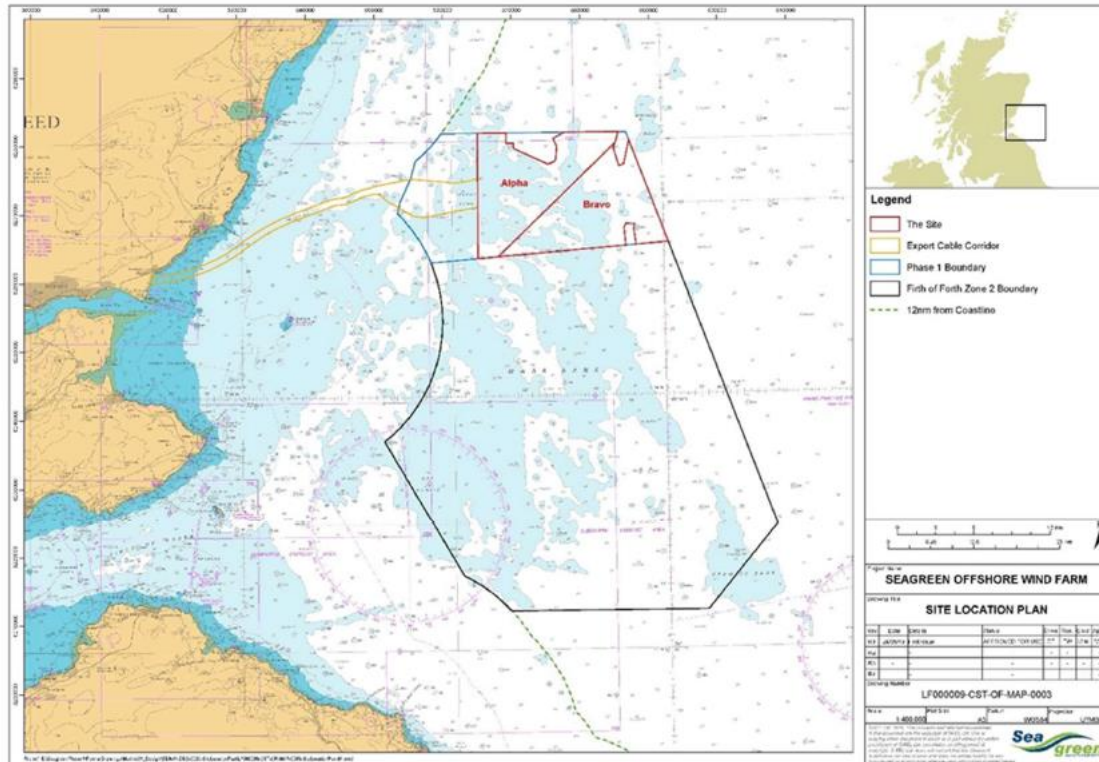


Fig 1 – Seagreen site boundary – in red.

ID	Latitude (DDM WGS 84)	Longitude (DDM WGS 84)
01	56° 40.631' N	1° 43.829' W
02	56° 40.606' N	1° 36.151' W
03	56° 39.317' N	1° 36.884' W
04	56° 37.913' N	1° 36.151' W
05	56° 39.923' N	1° 34.627' W
06	56° 31.903' N	1° 29.311' W
07	56° 31.724' N	1° 33.882' W
08	56° 32.983' N	1° 34.195' W
09	56° 33.051' N	1° 35.583' W
10	56° 31.666' N	1° 35.352' W
11	56° 30.803' N	1° 56.378' W
12	56° 40.653' N	1° 56.226' W
13	56° 40.648' N	1° 52.170' W
14	56° 39.836' N	1° 51.101' W
15	56° 38.138' N	1° 46.249' W
16	56° 38.383' N	1° 45.181' W
17	56° 40.157' N	1° 45.487' W

Table 1 – Site boundary coordinates

## 2. Activity Description.

On behalf of Seagreen Wind Energy Ltd, Seaway 7 will install and trench inter-array cabling between the wind turbine generator foundation structures and into the offshore sub-station platform within the Seagreen site boundary as shown in fig 1. Two vessels will be involved in the inter-array cabling operation, further details of their operations are below.

# NOTICE TO MARINERS

**Siem Stingray** – This vessel will act as the installation support vessel. Cable installation technicians will be deployed to the wind turbine generator foundation and sub-station platform structures using the vessels' motion compensated gangway system. Cable pulling equipment will be transferred onto the structures and set up ready for the cables to be pulled in and secured in the foundation basement. The motion compensated gangway system can be used for personnel and cargo transfers, an example is shown below in fig 2.



*Fig 2 – Ampelmann motion compensated gangway system*

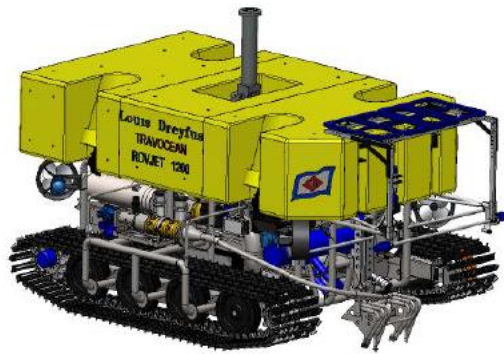
**Seaway Phoenix** – This vessel will lay the inter array cable between adjacent foundation structures. Once the cable has been pulled in and secured at the first foundation the cable will be surface laid to the second foundation location, pulled in and secured within the foundation basement. Cables will also be pulled into the offshore sub-station platform.

Prior to cable laying operations commencing Seaway Phoenix will perform a pre lay grapnel run along the cable route between the two foundations, this is required to remove any debris that may hamper cable lay operations, any debris will be brought ashore for disposal.

On completion of the cable lay operation the Seaway Phoenix will trench the surface laid cable. A remotely operated trenching vehicle will be used to bury the inter array cables to the required depth, please see below example of the remotely operated trenching vehicle in Fig 3 and the vehicle being deployed from the vessel in fig 4.

Seaway Phoenix is expected to arrive at the Seagreen site on or around the 11<sup>th</sup> of April, Siem Stingray is expected to arrive on or around the 13<sup>th</sup> of April.

# NOTICE TO MARINERS



ROVJET 1200

Fig 3 – remotely operated trenching vehicle.



Fig 4 – trenching vehicle being deployed from vessel.

### 3. Vessel associated with this activity.

Vessel Name – Siem Stingray	
<b>General Description and Dimensions:</b>	120.8m x 27.0m x 5.8m
<b>Call Sign:</b>	LAFP8
<b>MMSI:</b>	258783000
<b>Direct Bridge/ Masters Number</b>	+47 2367 6970
<b>Onshore Representative:</b>	George Cooper Seaway 7 +44 (0) 7545 642881

# NOTICE TO MARINERS



Vessel Name – Seaway Phoenix	
<b>General Description and Dimensions:</b>	129.9m x 27.8m x 7.3m
<b>Call Sign:</b>	2EEZ6
<b>MMSI:</b>	235084529
<b>Direct Bridge/ Masters Number</b>	+44 (0) 1224 568700
<b>Onshore Representative:</b>	George Cooper Seaway 7 +44 (0) 7545 642881



## 4. General Safety Advice

Due to the vessels' mode of operation and equipment used they will at times be restricted in their ability to manoeuvre.

All vessels will exhibit appropriate lights and shapes prescribed by the International Regulations for Preventing Collisions at Sea, relative to their operations. The vessel will also transmit an Automatic Identification System (AIS) message.

### 4.1 Safety Zones

Following consideration by Scottish government ministers it has been agreed that during the construction phases of the Seagreen development mandatory rolling 500m safety zones will be established around each Wind Turbine Generator and/or their foundations whilst construction works are in progress, as indicated by the presence of a construction vessel. The safety zones will be triggered whenever a vessel is on station at a WTG and undertaking construction activities.

In addition, mandatory pre commissioning 50m safety zones will be established around each Wind Turbine Generator and/or their foundations when construction works have been completed but prior to Wind Farm commissioning or where construction works have only been partially completed. These safety zones will be active at any structure during the construction phase where a construction vessel is not present at a Wind Turbine Generator.

# NOTICE TO MARINERS



**MARINERS ARE REMINDED** to navigate with caution and keep continued watch on VHF Ch.70/16 when navigating the area.

## **5. Distribution List**

A central list of recipients is maintained by the Marine Coordinator; if you are not the appropriate recipient of these notices, or do not wish to receive the notices in the future, please contact us at the address included in Section 1 of this notice.