

NOTICE TO MARINERS



Notice of works associated with construction activities on Seagreen Offshore Wind Farm

Date of Issue	11/11/2021	Notice Number	31/2021
---------------	------------	---------------	---------

Seagreen Offshore Wind Farm – Offshore Sub-station Jacket Installation

Contact Details for Marine Coordination and Fisheries Liaison

The following contact can provide more information if required:

Telephone Number, 24/7	+44 (0) 333 344 5255
Duty Marine Coordinator	seagreenmarinecoordination@sse.com
Address	Seagreen Wind Energy Ltd, Inchbraoch House Montrose Port Authority, South Quay Ferryden, Montrose, Angus DD10 9SL.

Fisheries liaison is coordinated by Brown and May Marine Ltd. For all fisheries enquiries, John Watt is primary contact:

Telephone Number	+44 (0) 1379872144
Mobile number	+44 (0) 7590 880746
Email	John.Watt@Brownmay.com
Address	Brown and May Marine Progress Way Mid Suffolk Business Park Eye, Suffolk IP23 7HU

1. Area of planned activity.

The Seagreen offshore wind farm sub-station platform jacket will be installed at the location shown below in fig 1, coordinates as shown below in table 1.

NOTICE TO MARINERS

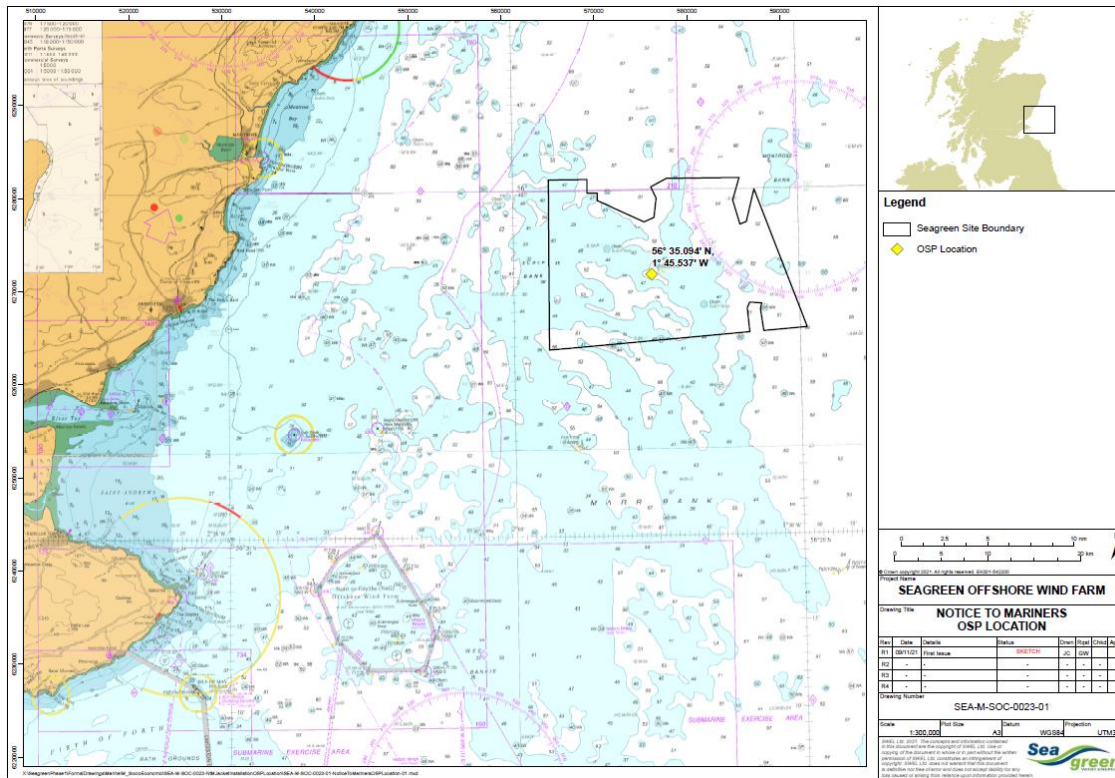


Fig 1 – Sub-station platform location

Sub-station jacket	Latitude (DDM WGS 84)	Longitude (DDM WGS 84)
	56° 35.094' N	1° 45.537' W

Table 1 – Sub-station platform coordinates

2. Activity Description.

On behalf of Seagreen Wind Energy Ltd, Petrofac will install and pile the offshore sub-station jacket structure.

The jacket structure will be lifted from the Heavy Transport Vessel Dongbang Giant 8 by the Heavy Lift Vessel Saipem 7000.

Once in position the Saipem 7000 will upend the jacket structure and set it down on the seabed. The Saipem 7000 will then collect 12 piles from the Dongbang Giant 8 and return to the sub-station platform location.

Saipem 7000 will then upend and stab the piles into the jacket pile sleeves, a hammer will then be utilised to drive the piles into position.

2 piles will be driven into each leg of the platform.

On completion of pile driving the area between the piles and the pile sleeve will be filled with grout.

There shall be four vessels involved in substation jacket installation activities. The Heavy Transport Vessel Dongbang Giant 8 will transport the jacket structure and piles to the work site. The Saipem 7000 will lift the jacket and set it down on the seabed, Saipem 7000 will also install and grout the 12 piles in the jacket legs.

NOTICE TO MARINERS

There shall also be two support tugs in attendance, BB Octopus and Bugsier 10.

All vessels involved are expected to arrive at the Seagreen site on or around the 18th of November.

An example of the sub-station jacket structure is shown below in fig 2.

Details of the vessels involved are shown below in section 3.

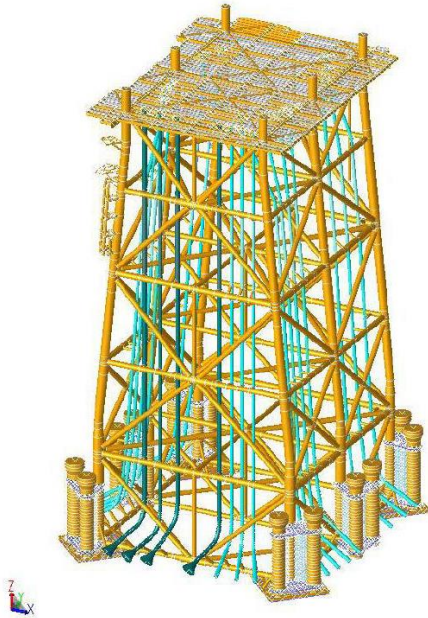


Fig 2 – Sub-station jacket platform.

3. Vessel associated with this activity.

Vessel Name – Siapem 7000	
General Description and Dimensions:	Heavy lift vessel: LOA 129.9 x 87m Beam
Call Sign:	C6NOS
MMSI:	309461000
Bridge telephone number	Inmarsat 00870773163946 V-Sat 00390252027520
Vessel contact details	S7000.Captain@Saipem.com S7000.Marine@saipem.com
Onshore representative.	Ram Jeyaraman ram.jeyaraman@petrofac.com

NOTICE TO MARINERS



Vessel Name – Dongbang Giant 8	
General Description and Dimensions:	Heavy Transport Vessel 165m LOA, 42m beam, 5.7m draught
Call Sign:	DSRM5
MMSI:	441915000
Bridge telephone number	Inmarsat : +870 7731 10678 Vsat : +82 70 8894 1288
Onshore Representative:	Ram Jeyaraman ram.jeyaraman@petrofac.com

NOTICE TO MARINERS



Vessel Name – BB Octopus	
General Description and Dimensions:	Tug/Supply vessel 78.3m LOA, 17.3m beam, 6.5m draught
Call Sign:	LFMZ
MMSI:	258184000
Bridge telephone number	TBC
Onshore Representative:	Ram Jeyaraman ram.jeyaraman@petrofac.com

NOTICE TO MARINERS



Vessel Name – Bugsier 10	
General Description and Dimensions:	Tug 32m LOA, 12.6m beam, 6m draught
Call Sign:	DFWB2
MMSI:	218321000
Bridge telephone number	TBC
Onshore Representative:	Ram Jeyaraman ram.jeyaraman@petrofac.com

NOTICE TO MARINERS



4. General Safety Advice

All vessels involved in construction activities will exhibit appropriate lights and day-time shapes prescribed by the International Regulations for Preventing Collisions at Sea, relative to operations. The vessel will also transmit an Automatic Identification System (AIS) message.

4.1 Safety Zones

Following consideration by Scottish government ministers it has been agreed that during the construction phases of the Seagreen development mandatory rolling 500m safety zones will be established around each Wind Turbine Generator and/or their foundations whilst construction works are in progress, as indicated by the presence of a construction vessel. The safety zones will be triggered whenever a vessel is on station at a WTG and undertaking construction activities.

In addition, mandatory pre commissioning 50m safety zones will be established around each Wind Turbine Generator and/or their foundations when construction works have been completed but prior to Wind Farm commissioning or where construction works have only been partially completed. These safety zones will be active at any structure during the construction phase where a construction vessel is not present at a Wind Turbine Generator.

MARINERS ARE REMINDED to navigate with caution and keep continued watch on VHF Ch.70/16 when navigating the area.

5. Distribution List

A central list of recipients is maintained by the Marine Coordinator; if you are not the appropriate recipient of these notices, or do not wish to receive the notices in the future, please contact us at the address shown in this notice.