

# NOTICE TO MARINERS



Notice to Mariners associated with construction activities on Seagreen Offshore Wind Farm

Date of Issue	25-08-21	Notice Number	18-2021
---------------	----------	---------------	---------

## Seagreen Boulder Clearance and Relocation Works

### Contact Details for Marine Coordination and Fisheries Liaison

The following contact can provide more information if required:

Telephone Number (Day Operations)	+44 (0) 333 344 5255
Email for Marine Coordinator	<a href="mailto:seagreenmarinecoordination@sse.com">seagreenmarinecoordination@sse.com</a>
Address	Seagreen Wind Energy Ltd 1 Waterloo Street Glasgow Glasgow G2 6AY

Fisheries liaison is coordinated by Brown and May Marine Ltd. For all fisheries enquiries, Alex Winrow-Giffin is primary contact:

Telephone Number	+44 (0) 1379872144
Mobile number	+44 (0) 7760 160039
Email	<a href="mailto:Alex@brownmay.com">Alex@brownmay.com</a>
Address	Brown and May Marine Progress Way Mid Suffolk Business Park Eye, Suffolk IP23 7HU

### 1. Area of Planned Activity.

A boulder clearance and relocation campaign will take place within the Seagreen Offshore Wind Farm site boundary. The site boundary coordinates are shown below in table 1 with the campaign area shown in fig 1 in red.

ID	Latitude (DDM WGS 84)	Longitude (DDM WGS 84)
01	56° 40.631' N	1° 43.829' W
02	56° 40.606' N	1° 36.151' W
03	56° 39.317' N	1° 36.884' W
04	56° 37.913' N	1° 36.151' W
05	56° 39.923' N	1° 34.627' W

# NOTICE TO MARINERS

06	56° 31.903' N	1° 29.311' W
07	56° 31.724' N	1° 33.882' W
08	56° 32.983' N	1° 34.195' W
09	56° 33.051' N	1° 35.583' W
10	56° 31.666' N	1° 35.352' W
11	56° 30.803' N	1° 56.378' W
12	56° 40.653' N	1° 56.226' W
13	56° 40.648' N	1° 52.170' W
14	56° 39.836' N	1° 51.101' W
15	56° 38.138' N	1° 46.249' W
16	56° 38.383' N	1° 45.181' W
17	56° 40.157' N	1° 45.487' W

Table 1 – Seagreen site boundary coordinates.

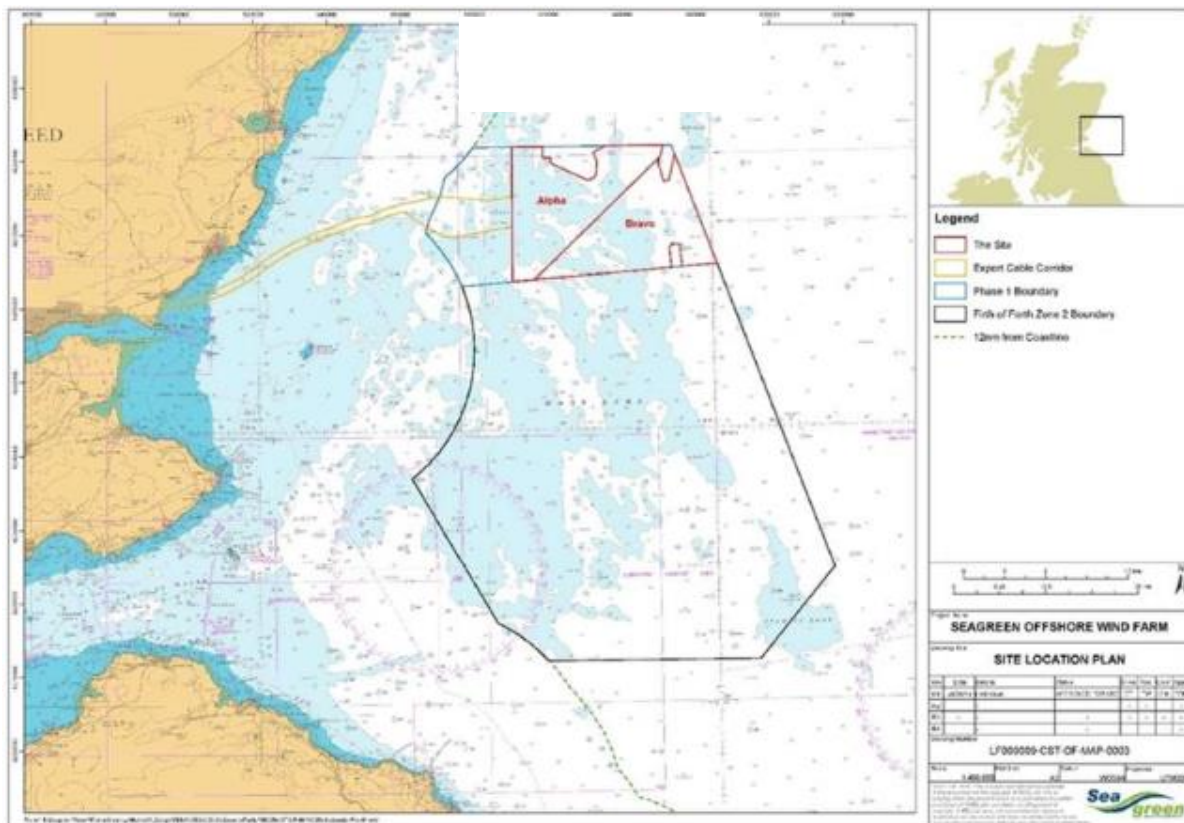


Fig 1 – Seagreen site boundary

## 2. Activity Description.

On behalf of Seagreen Wind Energy Ltd, Seaway 7 will deliver boulder clearance and relocation services on the Inter Array Cable routes, Wind Turbine Generator Foundation locations and the Offshore Substation Platform location.

A ROV with integrated grab tool will be launched using the vessel's heave compensated crane to facilitate the relocation of pre-selected boulders from working areas. Any seabed debris located within working areas will also be relocated. An example of the ROV and integrated grab tool is shown below in fig 2.

The boulder clearance vessel, MMA Pinnacle is expected to arrive on site on or around the 30<sup>th</sup> of August.

# NOTICE TO MARINERS



Fig 2 – ROV with integrated grab tool.

### 3. Vessel associated with this activity.

Vessel Name – MMA Pinnacle	
<b>General Description and Dimensions:</b>	Multi-Purpose Supply DP 2 Vessel - 87.8m LOA, 22.0m beam, 5.5m draught
<b>Call Sign:</b>	9WNM1
<b>MMSI:</b>	533130779
<b>Satellite communications details</b>	Inmarsat Number - +870 7732 58722 V-Sat Number +65 3163 2965
<b>Direct Bridge/ Masters Number</b>	+65 90180775
<b>Onshore Representative:</b>	Bridge.Pinnacle@mmaoffshore.com

# NOTICE TO MARINERS



## 4. General Safety Advice

MMA Pinnacle will exhibit appropriate lights and shapes prescribed by the International Regulations for Preventing Collisions at Sea, relative to their operations. All vessels engaged in the activity will also transmit an Automatic Identification System (AIS) message.

**MARINERS ARE REMINDED** to navigate with caution and keep continued watch on VHF Ch. 70/16 when navigating the area

## 5. Distribution List

A central list of recipients is maintained by the Marine Coordinator; if you are not the appropriate recipient of these notices, or do not wish to receive the notices in the future, please contact us at the address included in Section 1 of this notice.