

# NOTICE TO MARINERS



## Notice of Construction activities on Seagreen Offshore Wind Farm

Date of Issue	09/06/2023	Notice Number	16/2023
---------------	------------	---------------	---------

### Seagreen Offshore Wind Farm – Inter-Array Cable Rock Placement.

#### Contact Details for Marine Coordination and Fisheries Liaison

The following contact can provide more information if required:

Telephone Number, 24/7	+44 (0) 333 344 5255
Duty Marine Coordinator	seagreenmarinecoordination@sse.com
Address	Seagreen Wind Energy Ltd, Windy Waves House, Montrose Port Authority, South Quay Ferryden, Montrose, Angus DD10 9SL.

Fisheries liaison is coordinated by Brown and May Marine Ltd. For all fisheries enquiries, John Watt is primary contact:

Telephone Number	+44 (0) 1379872144
Mobile number	+44 (0) 7590 880746
Email	John.Watt@Brownmay.com
Address	Brown and May Marine Progress Way Mid Suffolk Business Park Eye, Suffolk IP23 7HU

#### 1. Area of Planned Activity.

Rock placement operations will be conducted on the inter-array cables within the boundary of the Seagreen Offshore Wind Farm site as shown below in fig 1.

# NOTICE TO MARINERS

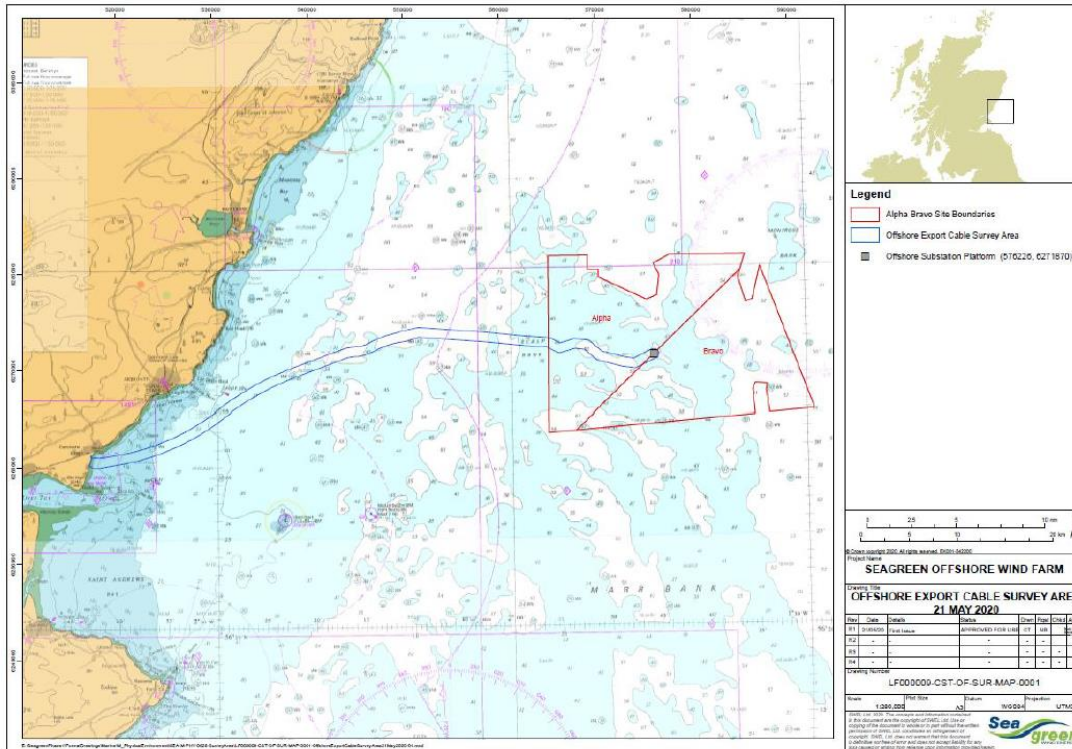


Fig 1 – Seagreen site boundary in red.

## 2. Activity Description

On behalf of Seagreen Wind Energy Ltd. Seaway 7 will conduct subsea rock protection installation on selected inter-array cable routes within the Seagreen site boundary.

The installation Vessel FFPV Nordnes will utilise its flexible fall-pipe system and ROV to install the rock on the inter-array cables as shown below in fig 2. Vessel details are shown in below in section 3.

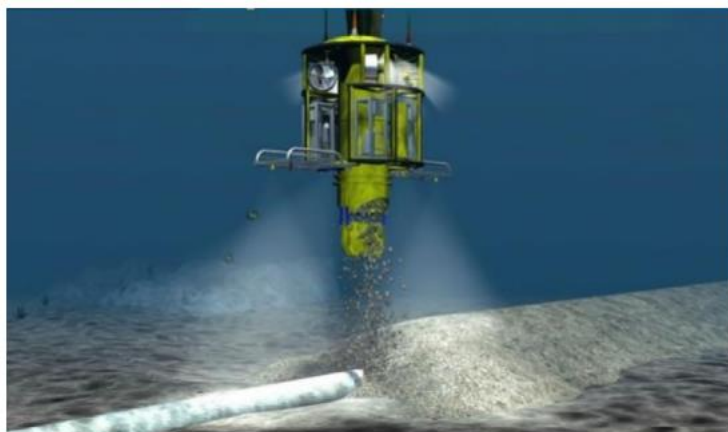



Fig 2 – Subsea rock installation on inter-array cables.

# NOTICE TO MARINERS

## 3. Vessel Details

Vessel – Nordnes.	Contact Details	
	Call Sign	PHOG
	MMSI	244962000
	Vessel Details	
	Length	166.0m
	Beam	24.0m
	Draft	8.0m
	Vessel Contact	N/A

## 4. Safety Zones

Following consideration by Scottish government ministers it has been agreed that during the construction phases of the Seagreen development mandatory rolling 500m safety zones will be established around each Wind Turbine Generator and/or their foundations whilst construction works are in progress, as indicated by the presence of a construction vessel. The safety zones will be triggered whenever a vessel is on station at a WTG and undertaking construction activities.

In addition, mandatory pre commissioning 50m safety zones will be established around each Wind Turbine Generator and/or their foundations when construction works have been completed but prior to Wind Farm commissioning or where construction works have only been partially completed. These safety zones will be active at any structure during the construction phase where a construction vessel is not present at a Wind Turbine Generator.

**MARINERS ARE REMINDED** to navigate with caution and keep continued watch on VHF Ch.70/16 when navigating the area.

## 5. Distribution List

A central list of recipients is maintained by the Marine Coordinator; if you are not the appropriate recipient of these notices, or do not wish to receive the notices in the future, please contact us at the address included in Section 1 of this notice.