

# NOTICE TO MARINERS



## Notice of works associated with construction activities on Seagreen Offshore Wind Farm

Date of Issue	21/10/2021	Notice Number	29/2021
---------------	------------	---------------	---------

### Seagreen Offshore Wind Farm – Foundation Grout Installation

#### Contact Details for Marine Coordination and Fisheries Liaison

The following contact can provide more information if required:

Telephone Number, 24/7	+44 (0) 333 344 5255
Duty Marine Coordinator	seagreenmarinecoordination@sse.com
Address	Seagreen Wind Energy Ltd, Inchbraoch House Montrose Port Authority, South Quay Ferryden, Montrose, Angus DD10 9SL.

Fisheries liaison is coordinated by Brown and May Marine Ltd. For all fisheries enquiries, John Watt is primary contact:

Telephone Number	+44 (0) 1379872144
Mobile number	+44 (0) 7590 880746
Email	John.Watt@Brownmay.com
Address	Brown and May Marine Progress Way Mid Suffolk Business Park Eye, Suffolk IP23 7HU

#### 1. Area of planned activity.

Grout will be installed in the wind turbine generator foundation suction caisson voids within the Seagreen site boundary. The site boundary coordinates are shown below in fig 1 and table 1.

# NOTICE TO MARINERS

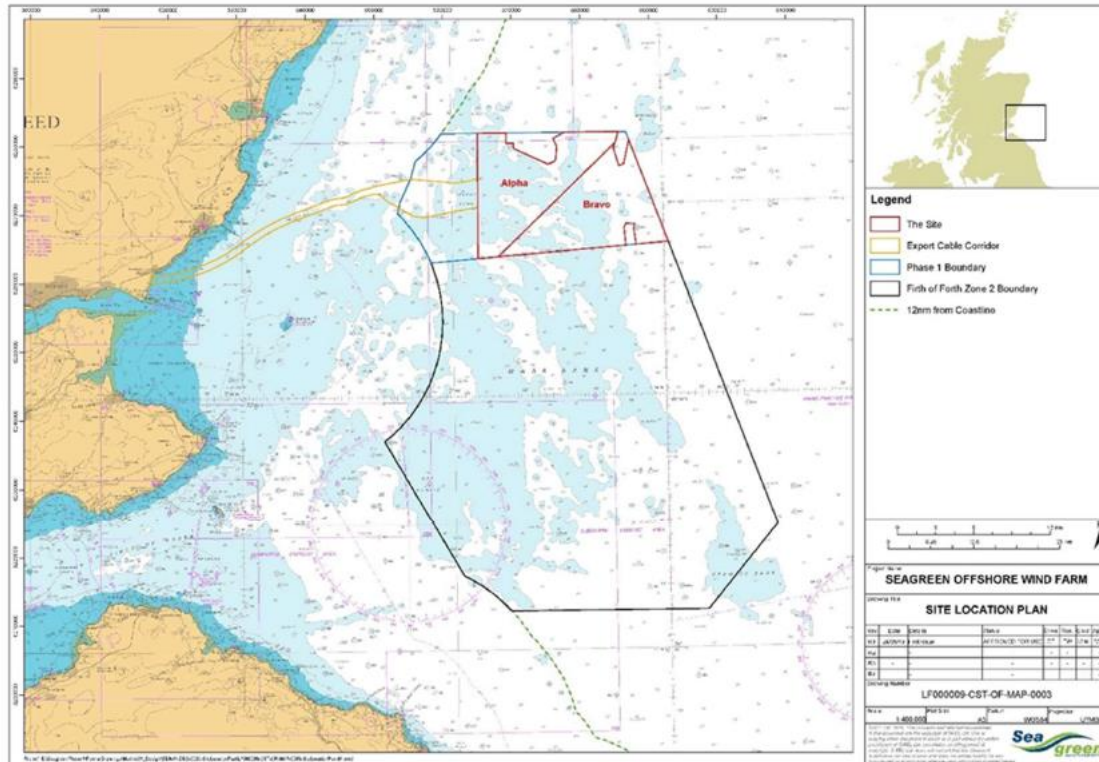


Fig 1 – Seagreen site boundary – in red.

ID	Latitude (DDM WGS 84)	Longitude (DDM WGS 84)
01	56° 40.631' N	1° 43.829' W
02	56° 40.606' N	1° 36.151' W
03	56° 39.317' N	1° 36.884' W
04	56° 37.913' N	1° 36.151' W
05	56° 39.923' N	1° 34.627' W
06	56° 31.903' N	1° 29.311' W
07	56° 31.724' N	1° 33.882' W
08	56° 32.983' N	1° 34.195' W
09	56° 33.051' N	1° 35.583' W
10	56° 31.666' N	1° 35.352' W
11	56° 30.803' N	1° 56.378' W
12	56° 40.653' N	1° 56.226' W
13	56° 40.648' N	1° 52.170' W
14	56° 39.836' N	1° 51.101' W
15	56° 38.138' N	1° 46.249' W
16	56° 38.383' N	1° 45.181' W
17	56° 40.157' N	1° 45.487' W

Table 1 – Site boundary coordinates

## 2. Activity Description.

On behalf of Seagreen Wind Energy Ltd, Seaway 7 will install grout to the wind turbine generator foundation suction caisson voids within the Seagreen site boundary as shown in fig 1.

# NOTICE TO MARINERS

The supply vessel EDT Hercules will transport the grouting mix to the Seagreen site. The vessel will set up at the required foundation location and connect a grout hose to the suction caisson, the grouting mixture will then be injected into the caisson void. A remotely operated vehicle (ROV) will also be utilised in this operation

The EDT Hercules is expected to arrive on site to commence works on or around the evening of the 25th of October 21.

An example of a wind turbine generator foundation and suction caisson is shown below in figs 2 & 3



*Fig 2 – WTG foundation structure*



*Fig 3 – Foundation caisson*

# NOTICE TO MARINERS

### 3. Vessel associated with this activity.

Vessel Name – EDT Hercules	
General Description and Dimensions:	Supply Vessel 88.8m LOA, 19.6m beam, 5.5m draught
Call Sign:	5BAM4
MMSI:	210776000
Bridge telephone number	+44 2037 699906
Onshore Representative:	George Cooper, Seaway 7. 07545 642881



### 4. General Safety Advice

The EDT Hercules will exhibit appropriate lights and shapes prescribed by the International Regulations for Preventing Collisions at Sea, relative to operations. The vessel will also transmit an Automatic Identification System (AIS) message.

It is requested all vessels give EDT Hercules a wide berth and pass the vessel at a safe distance in excess of 500m at all times when engaged in scour protection installation operations.

**MARINERS ARE REMINDED** to navigate with caution and keep continued watch on VHF Ch.70/16 when navigating the area.

### 5. Distribution List

# NOTICE TO MARINERS



A central list of recipients is maintained by the Marine Coordinator; if you are not the appropriate recipient of these notices, or do not wish to receive the notices in the future, please contact us at the address shown in this notice.