

# NOTICE TO MARINERS



## Notice of construction activities on Seagreen Offshore Wind Farm

Date of Issue	11/04/2023	Notice Number	12/2023
---------------	------------	---------------	---------

### Seagreen Offshore Wind Farm – Export Cable Nearshore Trenching Operations.

#### Contact Details for Marine Coordination and Fisheries Liaison

The following contact can provide more information if required:

Telephone Number, 24/7	+44 (0) 333 344 5255
Duty Marine Coordinator	seagreenmarinecoordination@sse.com
Address	Seagreen Wind Energy Ltd, Windy Waves House Montrose Port Authority, South Quay Ferryden, Montrose, Angus DD10 9SL.

Fisheries liaison is coordinated by Brown and May Marine Ltd. For all fisheries enquiries, John Watt is primary contact:

Telephone Number	+44 (0) 1379872144
Mobile number	+44 (0) 7590 880746
Email	Willie.w@Brownmay.com
Address	Brown and May Marine Progress Way Mid Suffolk Business Park Eye, Suffolk IP23 7HU

#### 1. Area of Planned Activity.

Trenching operations will be carried out on the three HVDC export cables at Carnoustie Beach landfall site, Angus.

# NOTICE TO MARINERS



## 2. Activity Description

On behalf of Seagreen Wind Energy Ltd, Nexans AS will trench the three HVDC export cables within the nearshore cable landfall site at Carnoustie Beach, Angus. The location is shown below in fig 1. During this operation two vessels will be used to bury the three HVDC cables. The utility vessel Green Isle and RHIB Echo are expected to commence operations on or around the 16<sup>th</sup> of April, vessel details below.

On completion of trenching operations five temporary anchors and rock-nets will be removed, locations and coordinates shown below in fig 2.

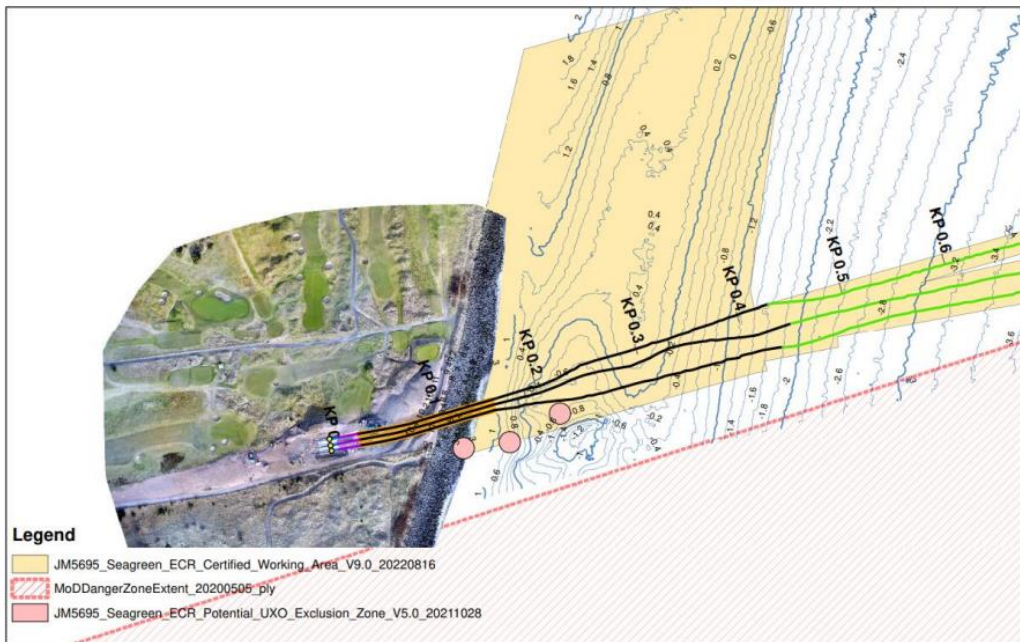
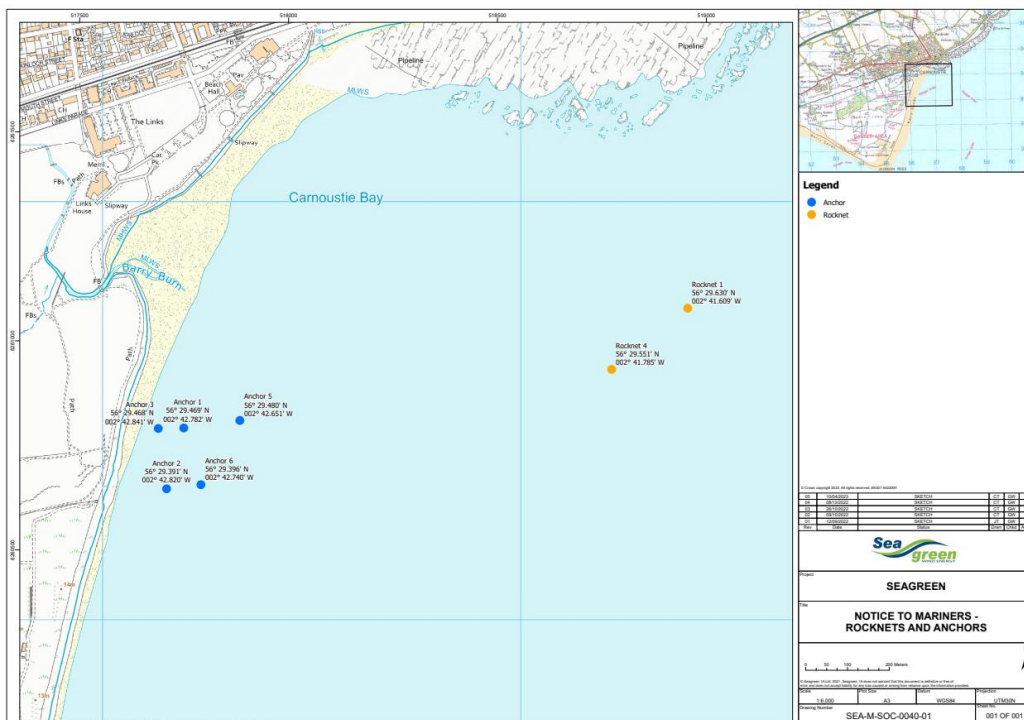



Fig 1 – Carnoustie export cable working area.




# NOTICE TO MARINERS

Fig 2 – Temporary anchor & rock-net coordinates.

### 3. Vessel Details

Vessel – Green Isle		Contact Details		
	Call Sign	2IAV3		
	MMSI	235108183		
	Vessel Details			
	Length	27.2m		
	Beam	11.5m		
	Draft	2.9m		
	Vessel Contact	Geir Korstad <a href="mailto:geir.korstad@nexans.com">geir.korstad@nexans.com</a>		

Vessel – Rhib Echo		Contact Details		
	Call Sign	2FZJ6		
	MMSI	235095508		
	Vessel Details			
	Length	8.0m		
	Beam	2.0m		
	Vessel Contact	Geir Korstad <a href="mailto:geir.korstad@nexans.com">geir.korstad@nexans.com</a>		

### 4. Safety Zones

Following consideration by Scottish government ministers it has been agreed that during the construction phases of the Seagreen development mandatory rolling 500m safety zones will be established around each Wind Turbine Generator and/or their foundations whilst construction works are in progress, as indicated by the presence of a construction vessel. The safety zones will be triggered whenever a vessel is on station at a WTG and undertaking construction activities.

In addition, mandatory pre commissioning 50m safety zones will be established around each Wind Turbine Generator and/or their foundations when construction works have been completed but prior to Wind Farm commissioning or where construction works have only been partially completed. These safety zones will be active at any structure during the construction phase where a construction vessel is not present at a Wind Turbine Generator.

**MARINERS ARE REMINDED** to navigate with caution and keep continued watch on VHF Ch.70/16 when navigating the area.

### 5. Distribution List

A central list of recipients is maintained by the Marine Coordinator; if you are not the appropriate recipient of these notices, or do not wish to receive the notices in the future, please contact us at the address included in Section 1 of this notice.