

# NOTICE TO MARINERS



## Notice of activities on Seagreen Offshore Wind Farm

Date of Issue	15/12/2021	Notice Number	33/2021 Revision 2
---------------	------------	---------------	--------------------

### Seagreen Offshore Wind Farm – Current Monitoring Devices Deployment Revision 2

#### Contact Details for Marine Coordination and Fisheries Liaison

The following contact can provide more information if required:

Telephone Number, 24/7	+44 (0) 333 344 5255
Duty Marine Coordinator	seagreenmarinecoordination@sse.com
Address	Seagreen Wind Energy Ltd, Inchbraoch House Montrose Port Authority, South Quay Ferryden, Montrose, Angus DD10 9SL.

Fisheries liaison is coordinated by Brown and May Marine Ltd. For all fisheries enquiries, John Watt is primary contact:

Telephone Number	+44 (0) 1379872144
Mobile number	+44 (0) 7590 880746
Email	John.Watt@Brownmay.com
Address	Brown and May Marine Progress Way Mid Suffolk Business Park Eye, Suffolk IP23 7HU

#### 1. Area of Planned Activity.

The current monitoring devices deployed in close proximity to S11 wind turbine generator suction caisson foundation jacket structure have been re-deployed to the coordinates below, still in close proximity to S11. The coordinates and location of S11 and current monitors are shown below in table 1 and figs 1 & 2.

ID	Latitude (DDM WGS 84)	Longitude (DDM WGS 84)
S11 foundation jacket	56° 39.859' N	1° 43.009' W
Current Monitor 1	56° 39.864' N	1° 42.987' W
Current Monitor 2	56° 39.856' N	1° 42.987' W
Current Monitor 3	56° 39.860' N	1° 43.025' W

Table 1 – S11 & monitor coordinates.

# NOTICE TO MARINERS

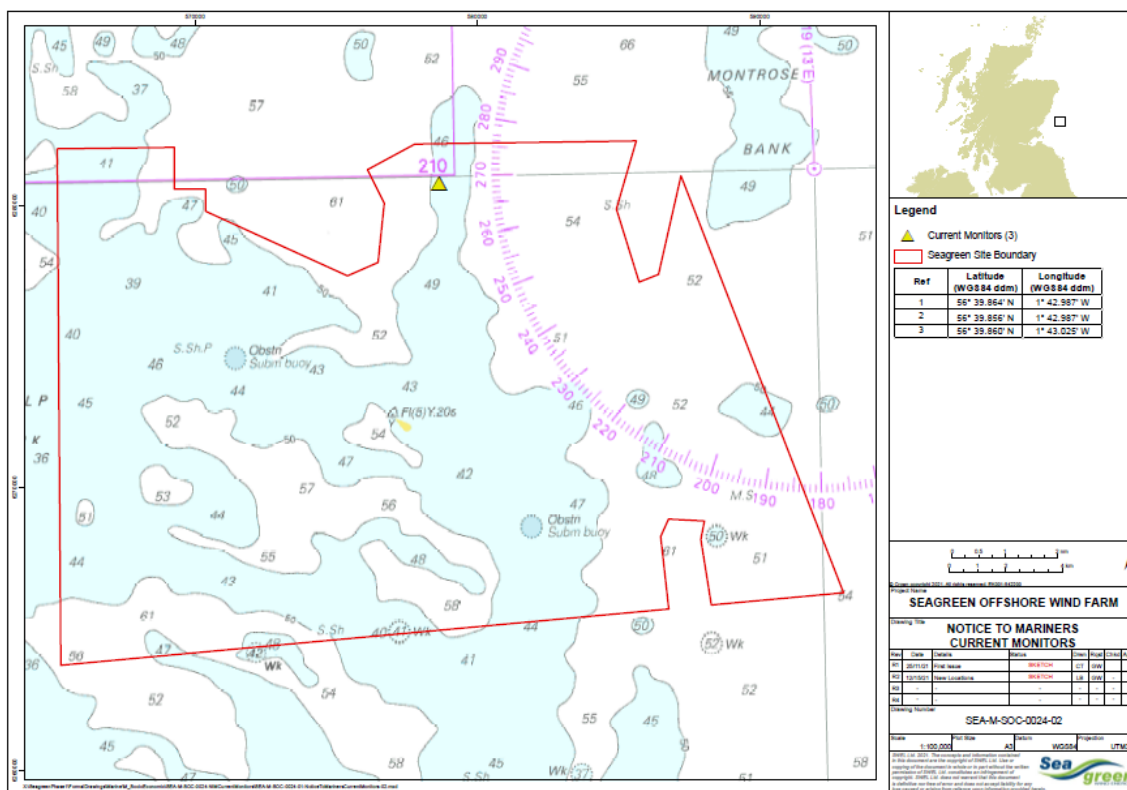


Fig 1 – S11 location.

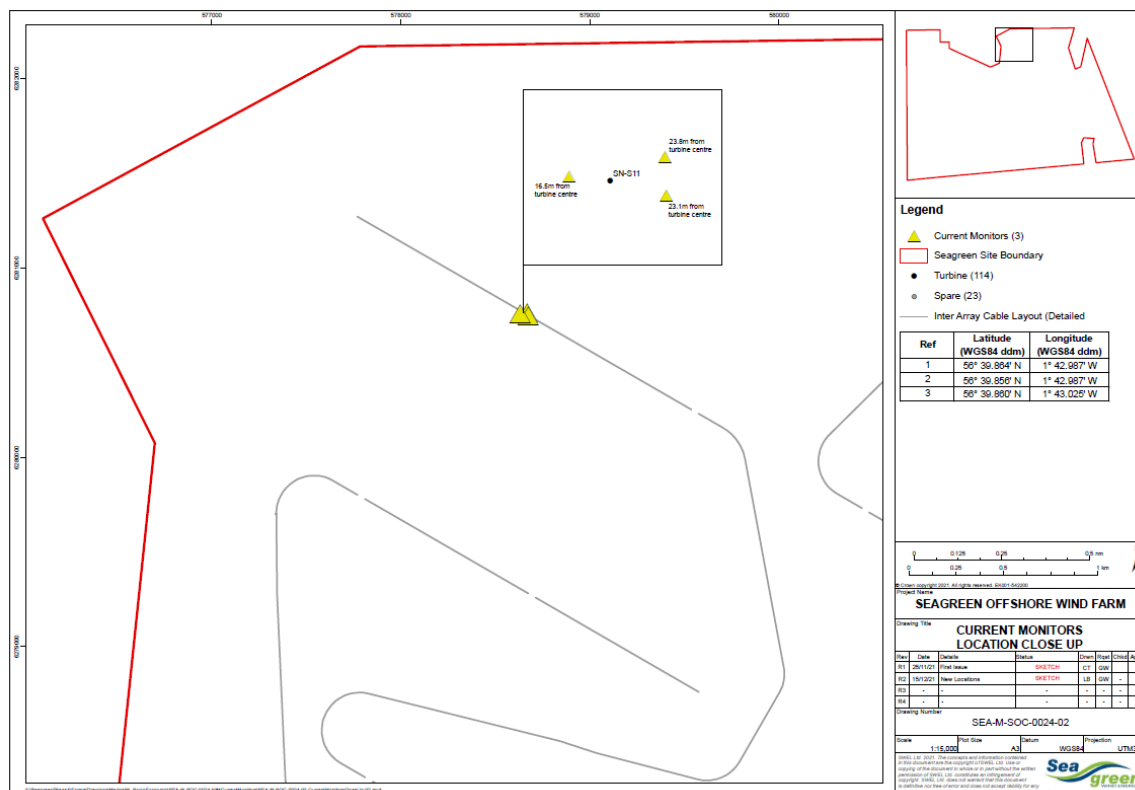


Fig 1 – Current monitor locations in close proximity to S11

# NOTICE TO MARINERS



## 2. Activity Description.

Mariners are advised that the three current monitoring devices deployed on the seabed in close proximity to S11 wind turbine generator suction caisson foundation jacket structure have been re-deployed at the coordinates started in table 1 and shown in Fig 1 & 2.

These devices will be removed from the seabed at a date to be confirmed

## 3. General Safety Advice

All Seagreen project vessels vessel will at times be restricted in their ability to manoeuvre due to the mode of operation and equipment being used.

All project vessels will exhibit appropriate lights and shapes prescribed by the International Regulations for Preventing Collisions at Sea; relative to their operations. The vessel will also transmit an Automatic Identification System (AIS) message.

## 4. Safety Zones

Following consideration by Scottish government ministers it has been agreed that during the construction phases of the Seagreen development mandatory rolling 500m safety zones will be established around each Wind Turbine Generator and/or their foundations whilst construction works are in progress, as indicated by the presence of a construction vessel. The safety zones will be triggered whenever a vessel is on station at a WTG and undertaking construction activities.

In addition, mandatory pre commissioning 50m safety zones will be established around each Wind Turbine Generator and/or their foundations when construction works have been completed but prior to Wind Farm commissioning or where construction works have only been partially completed. These safety zones will be active at any structure during the construction phase where a construction vessel is not present at a Wind Turbine Generator.

**MARINERS ARE REMINDED** to navigate with caution and keep continued watch on VHF Ch.70/16 when navigating the area.

## 5. Distribution List

A central list of recipients is maintained by the Marine Coordinator; if you are not the appropriate recipient of these notices, or do not wish to receive the notices in the future, please contact us at the address included in Section 1 of this notice.