

NOTICE TO MARINERS



Notice to Mariners associated with construction activities on Seagreen Offshore Wind Farm

Date of Issue	27-01-2022	Notice Number	01-2022 (Revision 1)
---------------	------------	---------------	----------------------

Seagreen Offshore Wind Farm – Export Cable Installation.

Contact Details for Marine Coordination and Fisheries Liaison

The following contact can provide more information if required:

Telephone Number (Day Operations)	+44 (0) 333 344 5255
Email for Marine Coordinator	seagreenmarinecoordination@sse.com
Address	Seagreen Wind Energy Ltd 1 Waterloo Street Glasgow Glasgow G2 6AY

Fisheries liaison is coordinated by Brown and May Marine Ltd. For all fisheries enquiries, John Watt is primary contact:

Telephone Number	+44 (0) 1379872144
Mobile number	+44 (0) 7590 880746
Email	John.Watt@Brownmay.com
Address	Brown and May Marine Progress Way Mid Suffolk Business Park Eye, Suffolk IP23 7HU

1. Area of planned activity

Export cable installation activities will commence at the Carnoustie export cable landfall site. On completion of cable pull in activities at landfall the export cable will be surface laid to the Seagreen offshore site where it will be pulled in at the offshore sub-station platform. Seagreen export cable corridor and site boundary is shown below in figs 1 and 2. Coordinates of the site boundary are listed in table 1 with the Export Cable Corridor centre coordinates shown in Table 2.

NOTICE TO MARINERS

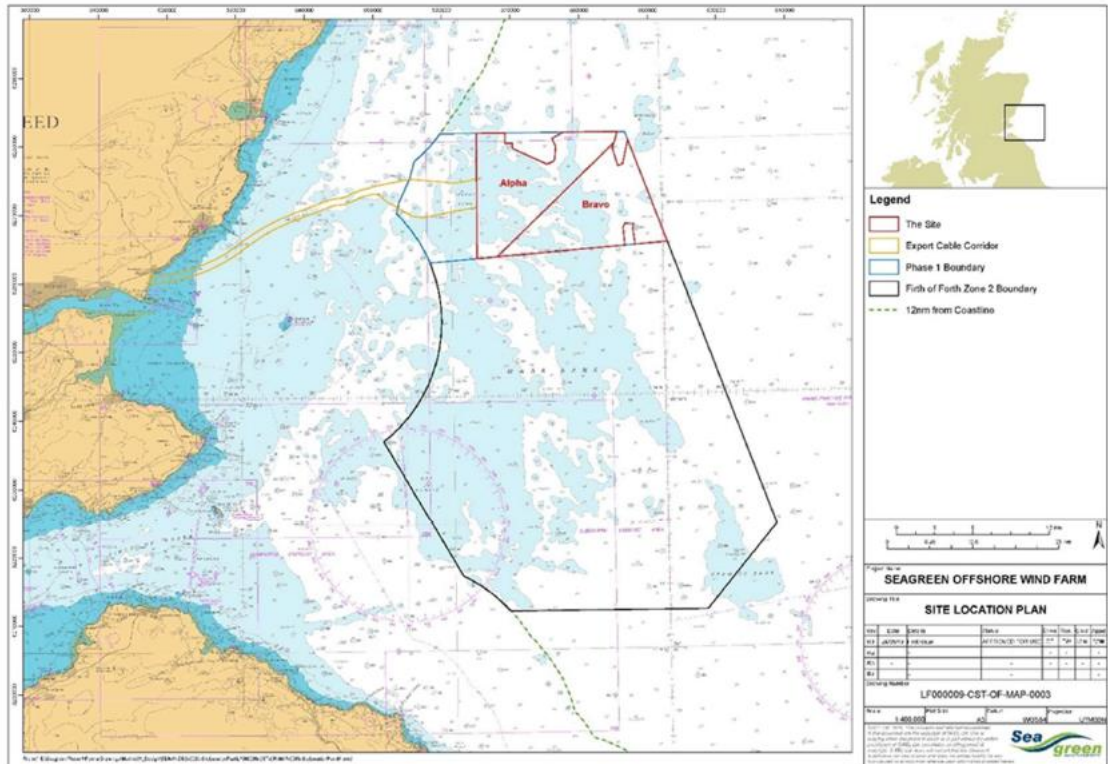


Fig 1 – Seagreen site boundary – in red

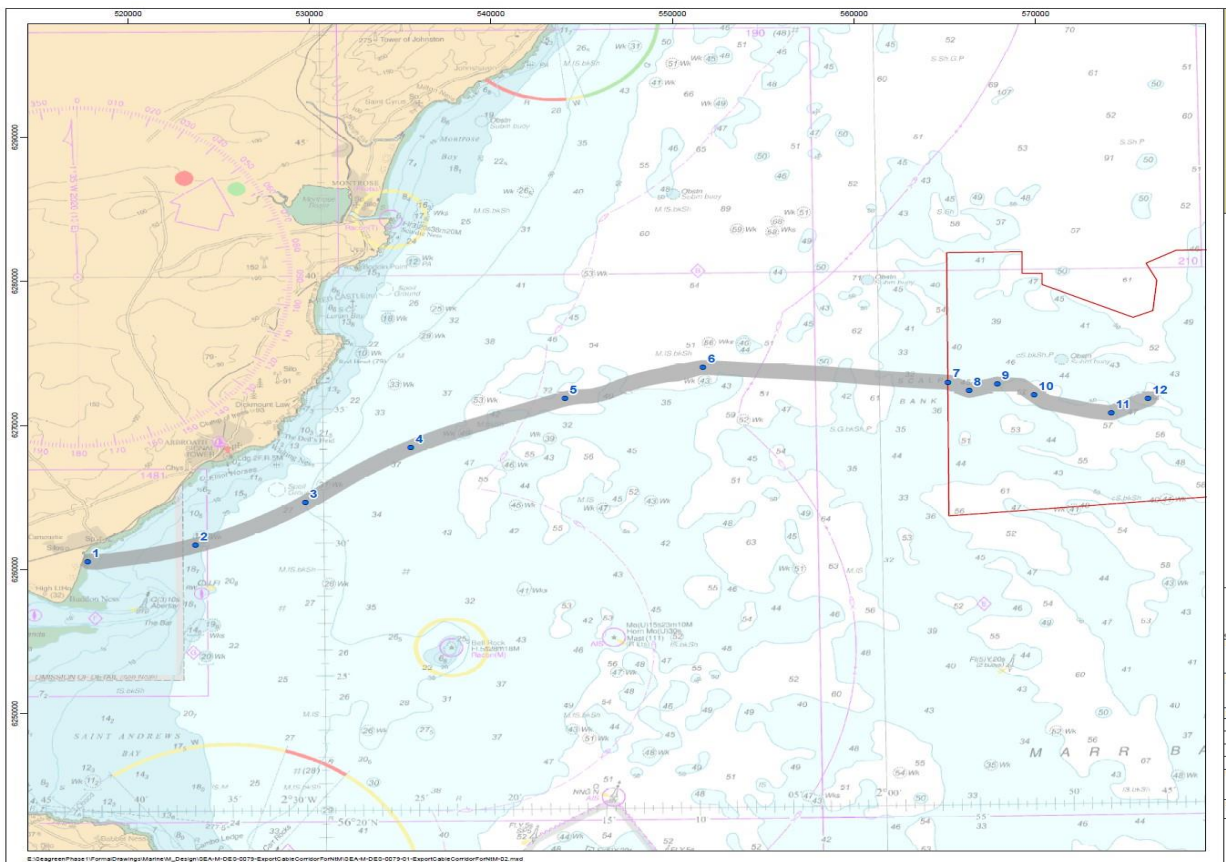


Fig 2 – Seagreen Export Cable Corridor

NOTICE TO MARINERS



ID	Latitude (DDM WGS 84)	Longitude (DDM WGS 84)
01	56° 40.631' N	1° 43.829' W
02	56° 40.606' N	1° 36.151' W
03	56° 39.317' N	1° 36.884' W
04	56° 37.913' N	1° 36.151' W
05	56° 39.923' N	1° 34.627' W
06	56° 31.903' N	1° 29.311' W
07	56° 31.724' N	1° 33.882' W
08	56° 32.983' N	1° 34.195' W
09	56° 33.051' N	1° 35.583' W
10	56° 31.666' N	1° 35.352' W
11	56° 30.803' N	1° 56.378' W
12	56° 40.653' N	1° 56.226' W
13	56° 40.648' N	1° 52.170' W
14	56° 39.836' N	1° 51.101' W
15	56° 38.138' N	1° 46.249' W
16	56° 38.383' N	1° 45.181' W
17	56° 40.157' N	1° 45.487' W

Table 1 – Site boundary coordinates

ID	Latitude (DDM WGS 84)	Longitude (DDM WGS 84)
01	56° 29.342' N	002° 42.684' W
02	56° 29.933' N	002° 36.884' W
03	56° 31.506' N	002° 30.970' W
04	56° 33.546' N	002° 25.266' W
05	56° 35.331' N	002° 16.933' W
06	56° 36.460' N	002° 09.475' W
07	56° 35.803' N	001° 56.301' W
08	56° 35.480' N	001° 55.169' W
09	56° 35.709' N	001° 53.649' W
10	56° 35.297' N	001° 51.678' W
11	56° 34.577' N	001° 47.558' W
12	56° 35.086' N	001° 45.557' W

Table 2 – Export Cable Corridor centre coordinates

2. Activity Description.

On behalf of Seagreen Wind Energy Ltd, Nexans AS will commence the installation of the first of three Seagreen export cables.

Operations will commence at the Carnoustie cable landfall site, the export cable will be floated ashore where it will be pulled into the landfall cable protection pipe and terminated.

The cable will then be surface laid through the Seagreen export cable corridor to the offshore sub-station platform.

Once at the offshore sub-station the cable will be pulled into the platform.

The cable will be trenched at a later date.

NOTICE TO MARINERS

There shall be five vessels utilised during this operation. Nexans Aurora will transport the cable to site and lay it between the landfall site and sub-station platform, there shall be a number of small tenders deployed from the Nexans Aurora during operations at landfall. During pull-in operations at the sub-station platform the Manor Enterprise crew transfer vessel will deploy teams to the platform. Three guard vessels will be deployed to guard the surface laid cable.

Nexans Aurora and Manor Enterprise are expected to arrive at the Seagreen site on or around the 31st of January. The guard vessels will arrive at different dates which are to be confirmed. Further details of all vessels involved are below.

3. Vessel associated with this activity.

Vessel Name – Nexans Aurora.	
General Description and Dimensions:	Cable lay vessel 156.4m LOA, 31.2m beam, 6.6m draught
Call Sign:	LALC8
MMSI:	257682000
Satellite communications details	V-Sat Number - +47 23411094
Direct Bridge/ Masters Number	Inmarsat - 425768210 / 425768211
Onshore Representative:	Geir Korstad – Installation Manager +47 950 20 634.
	

Vessel Name – Manor Enterprise	
General Description and Dimensions:	Crew Transfer Vessel 21m LOA, 6.0m beam, 1.8m draught
Call Sign:	2FJE2
MMSI:	235091722
Direct Bridge/ Masters Number	
Onshore Representative:	Geir Korstad – Installation Manager +47 950 20 634.

NOTICE TO MARINERS





There shall be three guard vessels deployed to guard the surface laid cable between the landfall site and the offshore platform location, the three vessels shall be Shemarah II, Fisher Boys and Ocean Quest, details of the guard vessels are shown below.

Vessel Name – Shemarah II LH65	
General Description and Dimensions:	CTV- 27.0m LOA, 8.0m beam.
Call Sign:	MVRR7
MMSI:	232007650
Direct Bridge/ Masters Number	Sat phone - 00 33 640 047155
Onshore Representative:	Geir Korstad – Installation Manager +47 950 20 634.



NOTICE TO MARINERS

Vessel Name – Fisher Boys FR54	
General Description and Dimensions:	CTV- 20.0m LOA, 6.0m beam.
Call Sign:	MXHY7
MMSI:	234750000
Direct Bridge/ Masters Number	07801 536983
Onshore Representative:	Geir Korstad – Installation Manager +47 950 20 634.
	

Vessel Name – Ocean Quest FR375	
General Description and Dimensions:	CTV- 21.0m LOA, 6.0m beam.
Call Sign:	MSBS6
MMSI:	232004618
Direct Bridge/ Masters Number	07398 215602
Onshore Representative:	Geir Korstad – Installation Manager +47 950 20 634.
	

NOTICE TO MARINERS



4. General Safety Advice

Due to the vessels' mode of operation and equipment used they will at times be restricted in their ability to manoeuvre.

All vessels will exhibit appropriate lights and shapes prescribed by the International Regulations for Preventing Collisions at Sea; relative to their operations. The vessel will also transmit an Automatic Identification System (AIS) message.

4.1 Safety Zones

Following consideration by Scottish government ministers it has been agreed that during the construction phases of the Seagreen development mandatory rolling 500m safety zones will be established around each Wind Turbine Generator and/or their foundations whilst construction works are in progress, as indicated by the presence of a construction vessel. The safety zones will be triggered whenever a vessel is on station at a WTG and undertaking construction activities.

In addition, mandatory pre commissioning 50m safety zones will be established around each Wind Turbine Generator and/or their foundations when construction works have been completed but prior to Wind Farm commissioning or where construction works have only been partially completed. These safety zones will be active at any structure during the construction phase where a construction vessel is not present at a Wind Turbine Generator.

MARINERS ARE REMINDED to navigate with caution and keep continued watch on VHF Ch.70/16 when navigating the area.

5. Distribution List

A central list of recipients is maintained by the Marine Coordinator; if you are not the appropriate recipient of these notices, or do not wish to receive the notices in the future, please contact us at the address included in Section 1 of this notice.