

# NOTICE TO MARINERS



## Notice of survey activities on Seagreen Offshore Wind Farm

Date of Issue	24/06/2022	Notice Number	11/2022 Revision 1
---------------	------------	---------------	--------------------

### Seagreen Offshore Wind Farm – Geophysical & Unexploded Ordnance Survey

#### Contact Details for Marine Coordination and Fisheries Liaison

The following contact can provide more information if required:

Telephone Number, 24/7	+44 (0) 333 344 5255
Duty Marine Coordinator	seagreenmarinecoordination@sse.com
Address	Seagreen Wind Energy Ltd, Inchbraoch House Montrose Port Authority, South Quay Ferryden, Montrose, Angus DD10 9SL.

Fisheries liaison is coordinated by Brown and May Marine Ltd. For all fisheries enquiries, John Watt is primary contact:

Telephone Number	+44 (0) 1379872144
Mobile number	+44 (0) 7590 880746
Email	John.Watt@Brownmay.com
Address	Brown and May Marine Progress Way Mid Suffolk Business Park Eye, Suffolk IP23 7HU

#### 1. Area of planned activity.

Seaway 7 will conduct a geophysical/unexploded ordnance survey within the boundaries of the Seagreen Offshore Wind Farm, coordinaters of the survey locations are shown below in table 1 and fig 1.

# NOTICE TO MARINERS



ID	Latitude WGS84 DDM	Longitude WGS84 DDM
SN-K22	56° 33.064' N	1° 39.438' W
SN-K12	56° 35.962' N	1° 48.155' W
SN-Q15	56° 37.669' N	1° 41.238' W
SN-R16	56° 37.894' N	1° 39.505' W

Table 1 – Survey coordinates

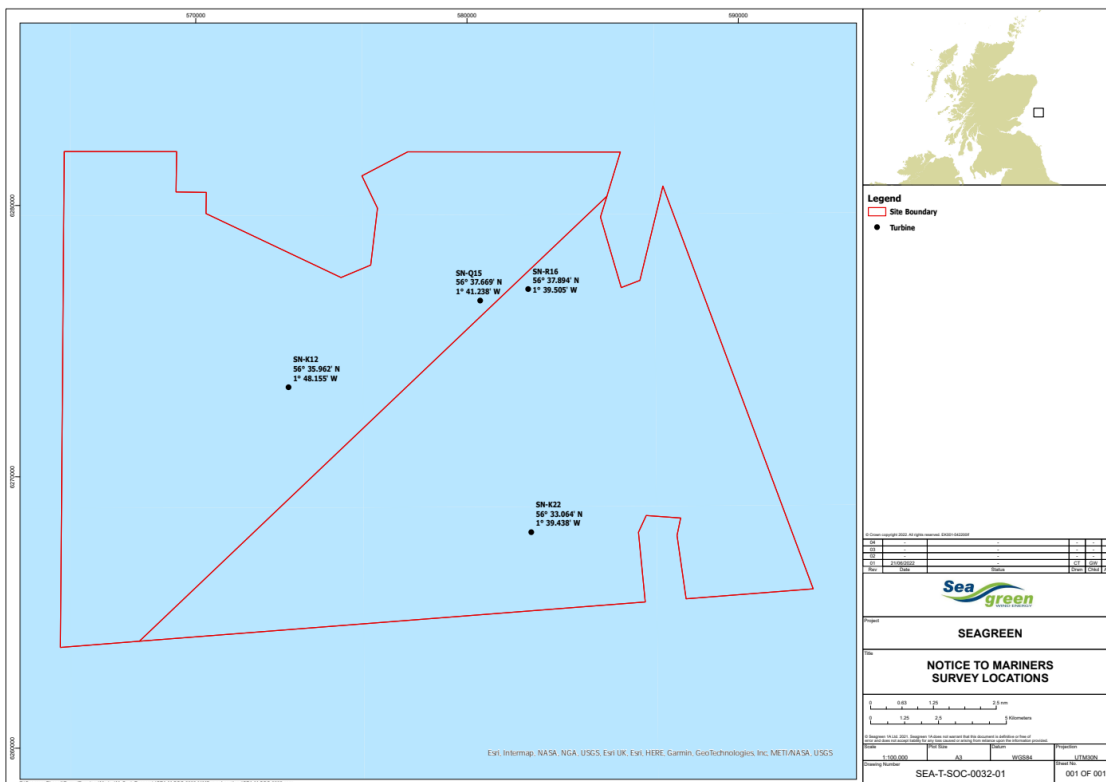


Fig 1 – Survey locations.

Prior to survey operations commencing systems calibrations require to be conducted within the Seagreen export cable corridor, two surrogate targets will be deployed on the seabed in the below coordinates to assist in these calibrations, coordinates shown below in Table 2 and fig 2.

	Latitude WGS84 DDM	Longitude WGS84 DDM
System Calibration	56° 33.792' N	2° 23.593' W

Table 2 – Calibration coordinates.

# NOTICE TO MARINERS

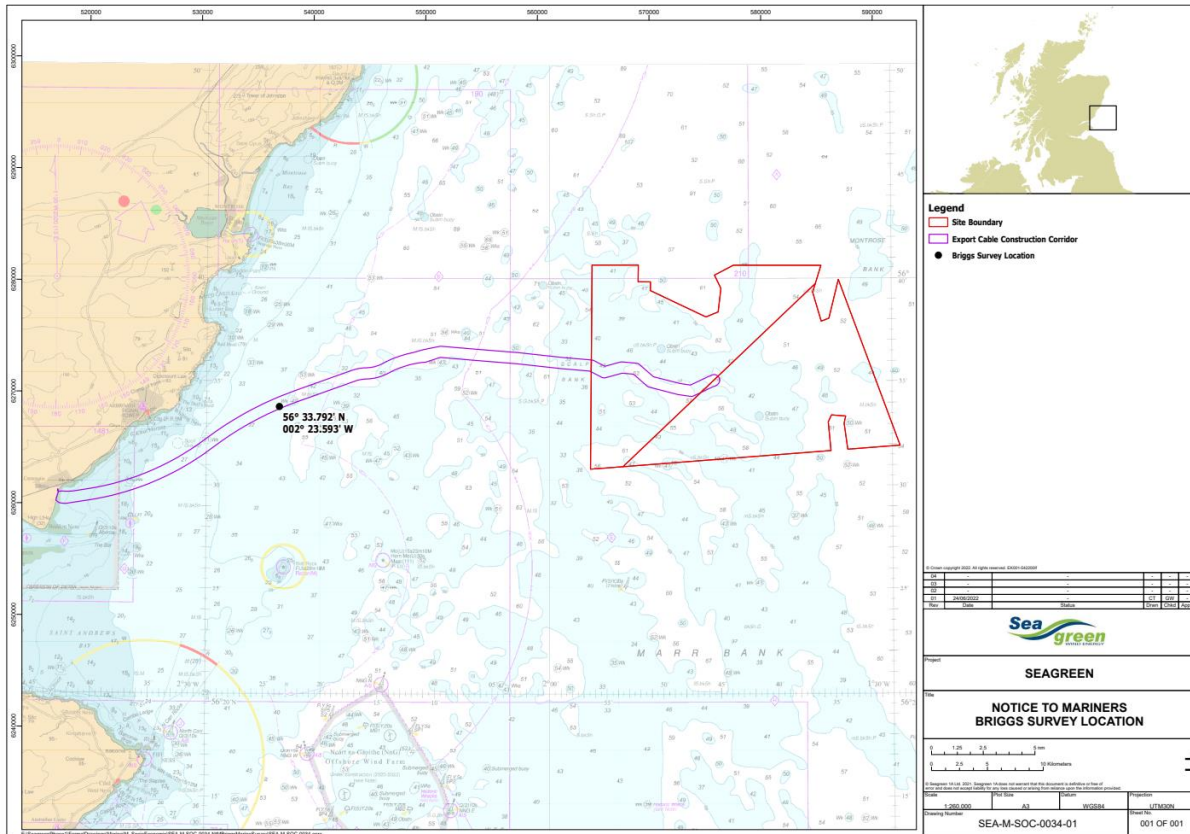



Fig 2 – Calibration coordinates

## 2. Activity Description.

On behalf of Seagreen Wind Energy Ltd. Seaway 7 will commence a geophysical/unexpolde ordnance survey on four spare asset locations within the boundary of the Seagreen site, details of the locations to be surveyed within the site are shown in table 1 & fig 1. Prior to survey operations commencing calibrations require to be carried out within the Seagreen export cable corridor, coordinates are shown in table 2 and fig 2.

The survey vessel Mersey Guardian is expected to arrive at site on or around the 25<sup>th</sup> of June to commence calibrations and survey operations, details of the vessel are below.

## 3. Vessels involved in this activity.

Vessel – Mersey Guardian – Survey vessel	Contact Details	
	Call Sign	2FGL4
	MMSI	235091051
	Vessel Details	
	Length	18.0m
	Beam	6.0m
	Draft	1.5m
	All Vessel Contact	George Cooper- Seaway 7 07545 642881

# NOTICE TO MARINERS



## **4. General Safety Advice**

Mariners are reminded to navigate with caution and keep a continuous watch on VHF Ch 70/16 when navigating in and around the Seagreen area.

All vessels involved in construction activities will exhibit appropriate lights and day-time shapes prescribed by the International Regulations for Preventing Collisions at Sea, relative to operations. The vessel will also transmit an Automatic Identification System (AIS) message.

## **5. Safety Zones**

Following consideration by Scottish government ministers it has been agreed that during the construction phases of the Seagreen development mandatory rolling 500m safety zones will be established around each Wind Turbine Generator and/or their foundations whilst construction works are in progress, as indicated by the presence of a construction vessel. The safety zones will be triggered whenever a vessel is on station at a WTG and undertaking construction activities.

In addition, mandatory pre commissioning 50m safety zones will be established around each Wind Turbine Generator and/or their foundations when construction works have been completed but prior to Wind Farm commissioning or where construction works have only been partially completed. These safety zones will be active at any structure during the construction phase where a construction vessel is not present at a Wind Turbine Generator.

## **6. Distribution List**

A central list of recipients is maintained by the Marine Coordinator; if you are not the appropriate recipient of these notices, or do not wish to receive the notices in the future, please contact us at the address shown in this notice.