

# NOTICE TO MARINERS



## Notice of survey activities on Seagreen Offshore Wind Farm

|               |            |               |         |
|---------------|------------|---------------|---------|
| Date of Issue | 16/08/2022 | Notice Number | 17/2022 |
|---------------|------------|---------------|---------|

### Seagreen Offshore Wind Farm – Export Cable 3 Wet Stow

#### Contact Details for Marine Coordination and Fisheries Liaison

The following contact can provide more information if required:

|                         |  |
|-------------------------|--|
| Telephone Number, 24/7  | +44 (0) 333 344 5255   |
| Duty Marine Coordinator | seagreenmarinecoordination@sse.com   |
| Address                 | Seagreen Wind Energy Ltd,<br>Inchbraoch House<br>Montrose Port Authority, South Quay<br>Ferryden, Montrose, Angus<br>DD10 9SL. |

Fisheries liaison is coordinated by Brown and May Marine Ltd. For all fisheries enquiries, John Watt is primary contact:

|                  |   |
|------------------|---|
| Telephone Number | +44 (0) 1379872144  |
| Mobile number    | +44 (0) 7590 880746   |
| Email            | John.Watt@Brownmay.com  |
| Address          | Brown and May Marine<br>Progress Way<br>Mid Suffolk Business Park<br>Eye, Suffolk<br>IP23 7HU |

#### 1. Area of activity.

Export cable 3 has been wet stowed on the seabed in close proximity to the Seagreen offshore sub-station platform.

#### 2. Activity Description.

On behalf of Seagreen Wind Energy Ltd, Nexans AS have wet stowed the end of export cable 3 on the seabed within the export cable corridor in the vicinity of the Seagreen offshore sub-station platform. The export cable installation vessel Nexans Aurora has laid down the cable at the coordinates shown below in table 1 and fig 1. The cable end will be retrieved at a date to be confirmed and pulled into the offshore sub-station platform.

# NOTICE TO MARINERS



| ID            | Lat ddm       | Long ddm       |
|---------------|---------------|----------------|
| EC3 cable end | 56° 34.967' N | 001° 45.905' W |

Table 1 – EC3 cable end wet-stow coordinates

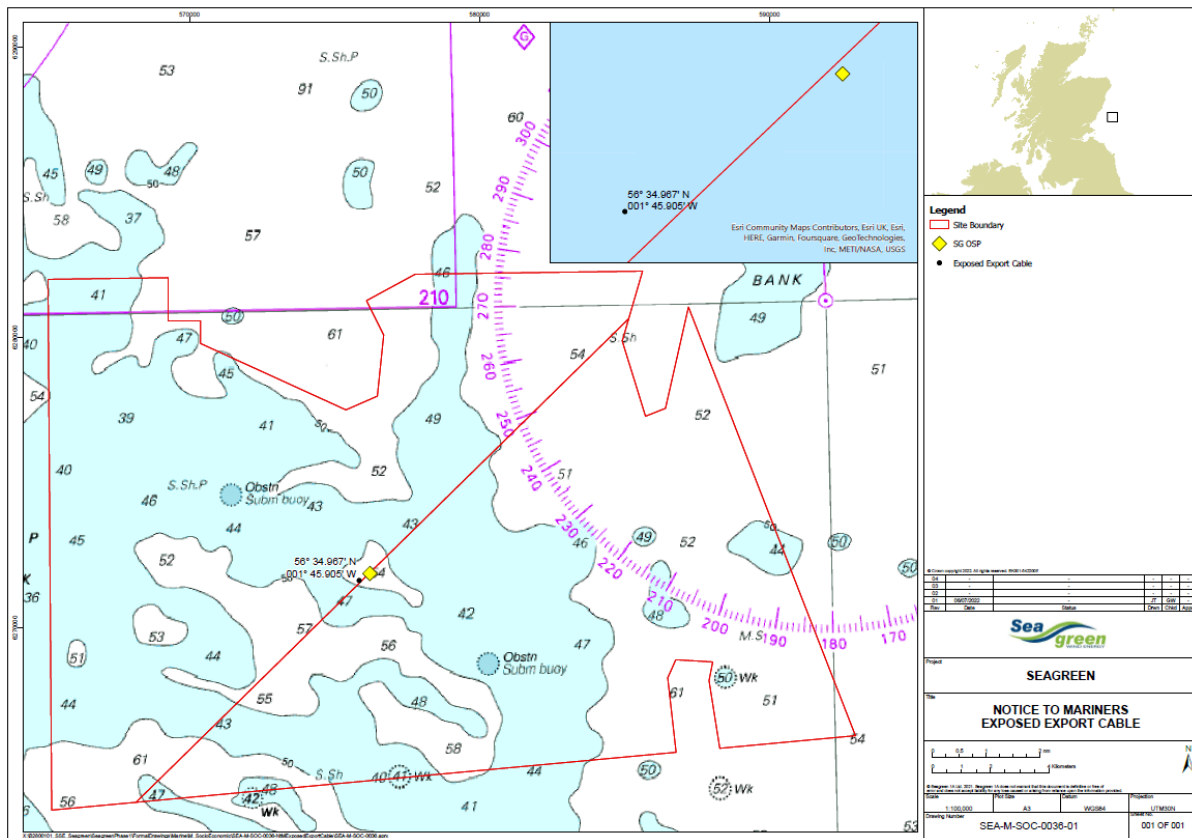


Fig 1 – Seabed wet-stow cable location.

### 3. Vessel involved with this activity

| 4. Vessel – Nexans Aurora | Contact Details    |  |
|---------------------------|--------------------|--|
|                           | Call Sign          | 257682000  |
|                           | MMSI               | 257682000  |
|                           | Vessel Details     |  |
|                           | Length             | 156m   |
|                           | Beam               | 31m  |
|                           | Draft              | 6m   |
|                           | All Vessel Contact | <a href="mailto:Per-Kristian.Pedersen@nexans.com">Per-Kristian.Pedersen@nexans.com</a> |

### 5. General Safety Advice

Mariners are reminded to navigate with caution and keep a continuous watch on VHF Ch 70/16 when navigating in and around the Seagreen area.

# NOTICE TO MARINERS



All vessels involved in construction activities will exhibit appropriate lights and day-time shapes prescribed by the International Regulations for Preventing Collisions at Sea, relative to operations. The vessel will also transmit an Automatic Identification System (AIS) message.

## **6. Safety Zones**

Following consideration by Scottish government ministers it has been agreed that during the construction phases of the Seagreen development mandatory rolling 500m safety zones will be established around each Wind Turbine Generator and/or their foundations whilst construction works are in progress, as indicated by the presence of a construction vessel. The safety zones will be triggered whenever a vessel is on station at a WTG and undertaking construction activities.

In addition, mandatory pre commissioning 50m safety zones will be established around each Wind Turbine Generator and/or their foundations when construction works have been completed but prior to Wind Farm commissioning or where construction works have only been partially completed. These safety zones will be active at any structure during the construction phase where a construction vessel is not present at a Wind Turbine Generator.

## **7. Distribution List**

A central list of recipients is maintained by the Marine Coordinator; if you are not the appropriate recipient of these notices, or do not wish to receive the notices in the future, please contact us at the address shown in this notice.