

NOTICE TO MARINERS



Notice of activities on Seagreen Offshore Wind Farm

Date of Issue	16/11/2022	Notice Number	21/2022
---------------	------------	---------------	---------

Seagreen Offshore Wind Farm – Maintenance of Acoustic Monitoring Devices

Contact Details for Marine Coordination and Fisheries Liaison

The following contact can provide more information if required:

Telephone Number, 24/7	+44 (0) 333 344 5255
Duty Marine Coordinator	seagreenmarinecoordination@sse.com
Address	Seagreen Wind Energy Ltd, Inchbraoch House Montrose Port Authority, South Quay Ferryden, Montrose, Angus DD10 9SL.

Fisheries liaison is coordinated by Brown and May Marine Ltd. For all fisheries enquiries, John Watt is primary contact:

Telephone Number	+44 (0) 1379872144
Mobile number	+44 (0) 7590 880746
Email	John.Watt@Brownmay.com
Address	Brown and May Marine Progress Way Mid Suffolk Business Park Eye, Suffolk IP23 7HU

1. Area of Planned Activity.

Maintenance works will be conducted on the five acoustic monitoring devices located in and around the Seagreen Offshore Wind Farm site, coordinates are below in table 1 and shown in Fig 1.

On behalf of Marine Scotland Science the vessel Alba na Mara will conduct the works on or around the 22nd of November, vessel details shown below.

NOTICE TO MARINERS



ID	Latitude (DDM WGS 84)	Longitude (DDM WGS 84)
Seagreen 01	56° 45.744' N	002° 21.264' W
Seagreen 02	56° 42.948' N	002° 10.968' W
Seagreen 03	56° 39.666' N	002° 00.540' W
Seagreen 04	56° 36.600' N	001° 50.160' W
Seagreen 05	56° 33.378' N	001° 41.622' W

Table 1 – Seagreen acoustic device coordinates.

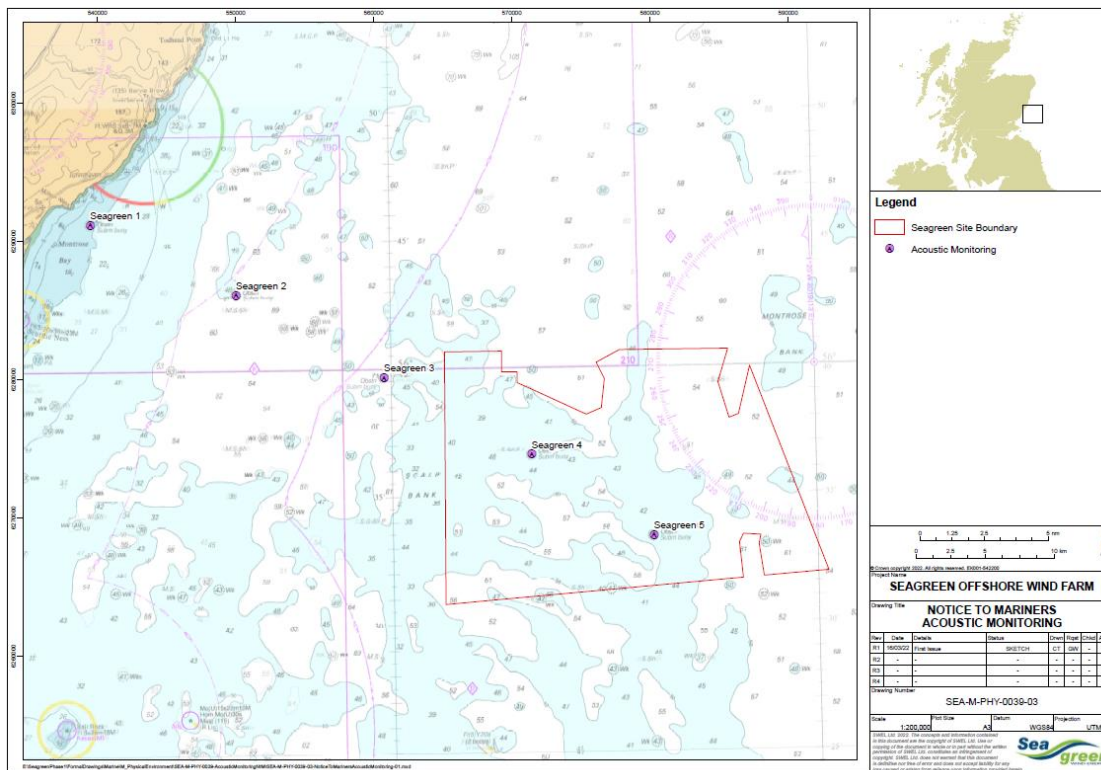



Fig 1 – Seagreen acoustic devices locations

2. Vessel Details

Vessel – Alba Na Mara	Contact Details	
	Call Sign	2AIE4
	MMSI	235059857
	Vessel Details	
	Length	27.0m
	Beam	9.0m
	Draft	4.8m
	Vessel Contact	N/A

NOTICE TO MARINERS



3. Safety Zones

Following consideration by Scottish government ministers it has been agreed that during the construction phases of the Seagreen development mandatory rolling 500m safety zones will be established around each Wind Turbine Generator and/or their foundations whilst construction works are in progress, as indicated by the presence of a construction vessel. The safety zones will be triggered whenever a vessel is on station at a WTG and undertaking construction activities.

In addition, mandatory pre commissioning 50m safety zones will be established around each Wind Turbine Generator and/or their foundations when construction works have been completed but prior to Wind Farm commissioning or where construction works have only been partially completed. These safety zones will be active at any structure during the construction phase where a construction vessel is not present at a Wind Turbine Generator.

MARINERS ARE REMINDED to navigate with caution and keep continued watch on VHF Ch.70/16 when navigating the area.

4. Distribution List

A central list of recipients is maintained by the Marine Coordinator; if you are not the appropriate recipient of these notices, or do not wish to receive the notices in the future, please contact us at the address included in Section 1 of this notice.