

# NOTICE TO MARINERS



## Notice of activities associated with survey operations on Seagreen Offshore Wind Farm

Date of Issue	08/01/2021	Notice Number	01/2021 Revision 1
---------------	------------	---------------	--------------------

### Seagreen Phase 1A Export Cable Geophysical Survey

#### Contact Details for Marine Coordination and Fisheries Liaison

The following contact can provide more information if required:

Telephone Number (Day Operations)	+44 (0) 7932 229828
Email for Marine Coordinator	graeme.watters@sse.com
Address	Seagreen Wind Energy Ltd 1 Waterloo Street Glasgow Glasgow G2 6AY

Fisheries liaison is coordinated by Brown and May Marine Ltd. For all fisheries enquiries, Alex Winrow-Giffin is primary contact:

Telephone Number	+44 (0) 1379872144
Mobile number	+44 (0) 7760 160039
Email	Alex@brownmay.com
Address	Brown and May Marine Progress Way Mid Suffolk Business Park Eye, Suffolk IP23 7HU

#### 1. Area of Planned Activity.

A Geophysical survey will take place within the proposed Seagreen Phase 1A Export Cable corridor between the planned Seagreen Phase 1 A site and Cockenzie in the Firth of Forth. The coordinates of the survey center line are provided in the following table, the offshore survey area is shown below in Fig 1, the nearshore survey area is shown in Fig 2.

ID	Latitude (DDM WGS 84)	Longitude (DDM WGS 84)
01	55° 57.970'N	2° 58.950'W
02	55° 59.190'N	2° 59.870'W
03	56° 04.600'N	2° 50.650'W
04	56° 05.310'N	2° 48.570'W
05	56° 06.830'N	2° 37.260'W
06	56° 08.100'N	2° 32.400'W

# NOTICE TO MARINERS

ID	Latitude (DDM WGS 84)	Longitude (DDM WGS 84)
07	56° 09.750'N	2° 28.340'W
08	56° 13.730'N	2° 23.430'W
09	56° 17.520'N	2° 21.390'W
10	56° 20.280'N	2° 18.790'W
11	56° 20.780'N	2° 16.470'W
12	56° 23.910'N	2° 10.830'W
13	56° 24.630'N	2° 03.960'W
14	56° 26.800'N	2° 01.810'W
15	56° 31.170'N	1° 59.480'W
16	56° 23.710'N	2° 11.020' W

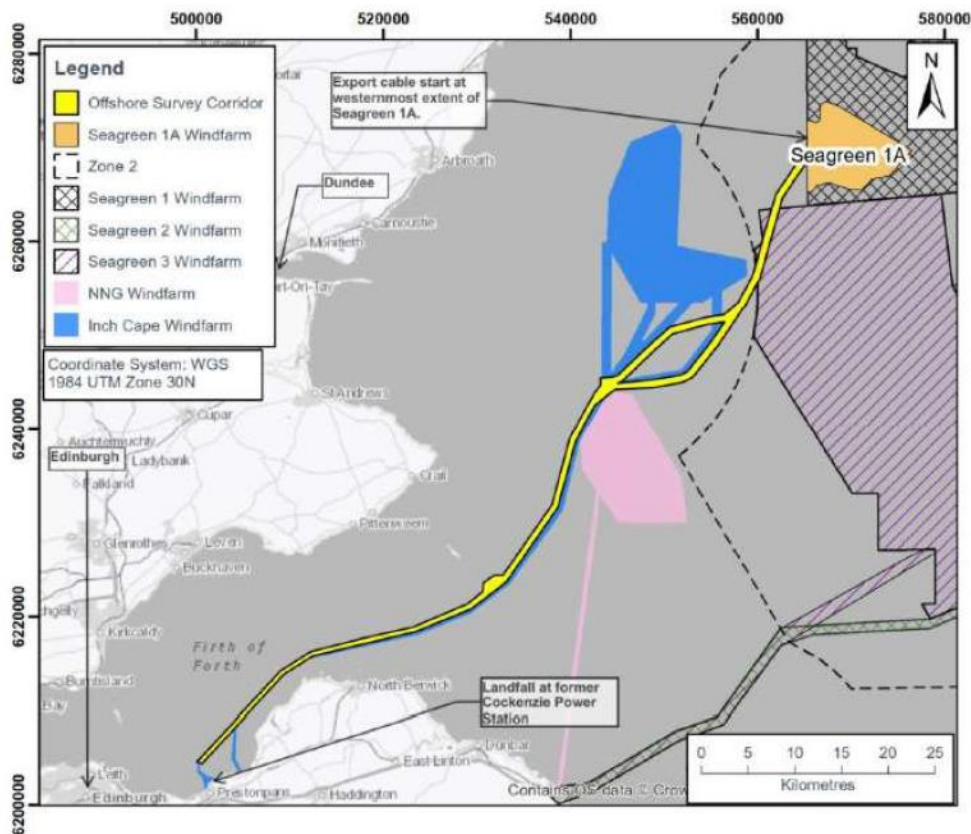


Fig 1 – Offshore Survey Area

# NOTICE TO MARINERS

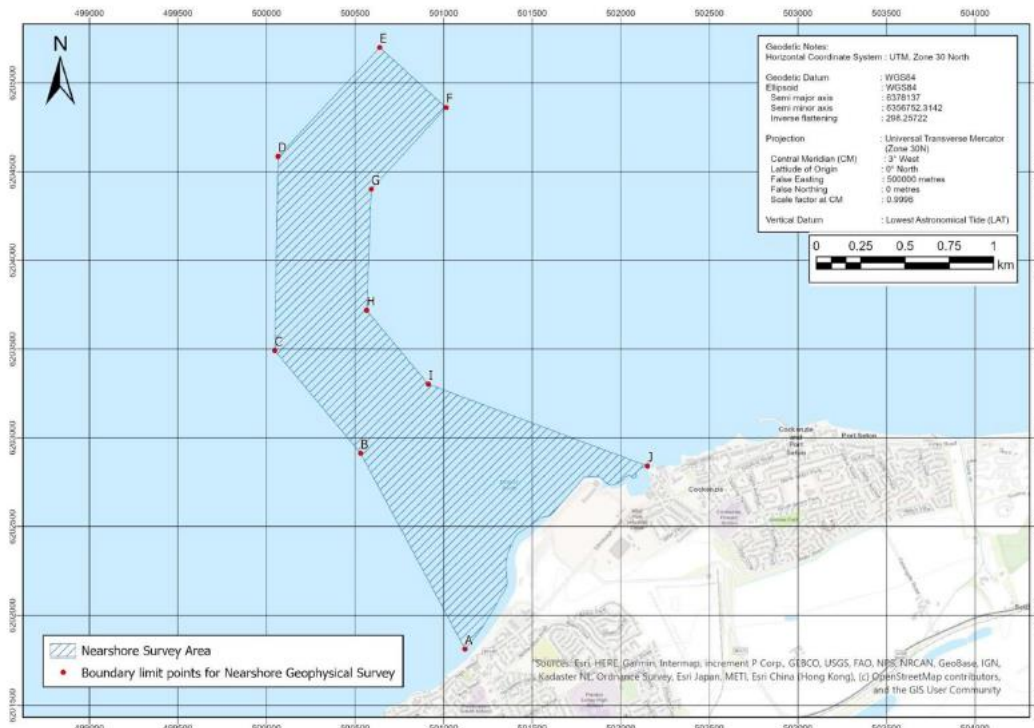


Fig 2 – Nearshore Survey Area

## 2. Activity Description.

### 2.1 – Offshore Survey Area.

On behalf of Seagreen Offshore Windfarm Ltd, MMT will conduct a geophysical and UXO survey within the planned Seagreen Phase 1A export cable corridor. The survey area will be between the Seagreen Phase 1 A site and Cockenzie in the Firth of Forth. The Survey Vessel, Franklin is expected to arrive on site late on Monday 11<sup>th</sup> January to commence calibration trials. The offshore survey is expected to be concluded in 36 days although weather conditions may extend the survey period.

The geophysical survey work will be conducted with a hull mounted Multi beam sonar with towed ROTV mounted side-scan sonar, sub-bottom profiler and tethered magnetometer.

Mariners are advised to keep an aft safety clearance of the vessel of no less than 350m.

### 2.2 – Nearshore Survey Area.

On behalf of Seagreen Offshore Windfarm Ltd, SEP Hydrographic will conduct a geophysical and UXO survey within the nearshore area of the planned Seagreen Phase 1A export cable route. The survey will take place from the 10m contour line towards Cockenzie in the Firth of Forth. The Survey vessel, Pulsar is expected on site on Tuesday 12<sup>th</sup> January. The nearshore survey is expected to be complete in 45 days although weather conditions may extend the survey period.

The geophysical survey work will be conducted with a pole mounted Multi beam sonar with towed side scan sonar, sub-bottom profiler and magnetometer.

Mariners are advised to keep an aft safety clearance of the vessel of no less than 100m.

## 3. Vessel associated with this activity.

# NOTICE TO MARINERS

Vessel Name – Franklin	
<b>General Description and Dimensions:</b>	Survey Vessel – LOA 55.6m, beam 11.9m, draught – 3.8m
<b>Call Sign:</b>	OZ2102
<b>MMSI:</b>	231781000
<b>Satellite communications details</b>	N/A
<b>Direct Bridge/ Masters Number</b>	+46 (0) 313100301
<b>Onshore Representative:</b>	Rani Mhor - +45 (0) 5136 6010
<b>Onboard Survey representative</b>	Gary Howes – 0033 788075150
<b>Offshore Fishing Liaison Officer</b>	Peter Gatt - +44 (0) 7880 936272



Vessel Name – Pulsar	
<b>General Description and Dimensions:</b>	Survey Vessel – LOA 7.2m, beam 2.0m.
<b>Call Sign:</b>	2FBX2

# NOTICE TO MARINERS

<b>MMSI:</b>	235089965
<b>Satellite communications details</b>	N/A
<b>Direct Bridge/ Masters Number</b>	+44 (0) 7709 571885
<b>Onshore Representative:</b>	John Sadler - +44 (0) 7876 638048
<b>Onboard Survey representative</b>	Nearshore works – Sebastian Rosales – +44 (0) 7876171372 <a href="mailto:Sebastian.rosales@sandgeophysics.com">Sebastian.rosales@sandgeophysics.com</a>  Intertidal works – Jordan Gear <a href="mailto:Jordan.gear@atkinsglobal.com">Jordan.gear@atkinsglobal.com</a>



#### 4. General Safety Advice

All vessels engaged in the survey activity will exhibit appropriate lights and shapes prescribed by the International Regulations for Preventing Collisions at Sea; relative to their operations. All vessels engaged in the activity will also transmit an Automatic Identification System (AIS) message.

**ALL VESSELS ARE REQUESTED** to give the survey vessel Franklin at least 350 m safety clearance aft and please give the nearshore survey vessel Pulsar at least 100m safety clearance aft.

# NOTICE TO MARINERS



**MARINERS ARE REMINDED** to navigate with caution and keep continued watch on VHF Ch.70/16 when navigating the area.

## **5. Distribution List**

A central list of recipients is maintained by the Marine Coordinator; if you are not the appropriate recipient of these notices, or do not wish to receive the notices in the future, please contact us at the address included in Section 1 of this notice.