

NOTICE TO MARINERS



Notice of activities associated with survey operations on Seagreen Offshore Wind Farm

Date of Issue	24/03/2021	Notice Number	06/2021
---------------	------------	---------------	---------

BENTHIC DROP-DOWN VIDEO & GRAB SAMPLING SURVEY.

Contact Details for Marine Coordination and Fisheries Liaison

The following contact can provide more information if required:

Telephone Number (Day Operations)	+44 (0) 7932 229828
Email for Marine Coordinator	graeme.watters@sse.com
Address	Seagreen Wind Energy Ltd 1 Waterloo Street Glasgow Glasgow G2 6AY

Fisheries liaison is coordinated by Brown and May Marine Ltd. For all fisheries enquiries, John Watt is primary contact:

Telephone Number	+44 (0) 1379872144
Mobile number	+44 (0) 7590 880746
Email	John.Watt@Brownmay.com
Address	Brown and May Marine Progress Way Mid Suffolk Business Park Eye, Suffolk IP23 7HU

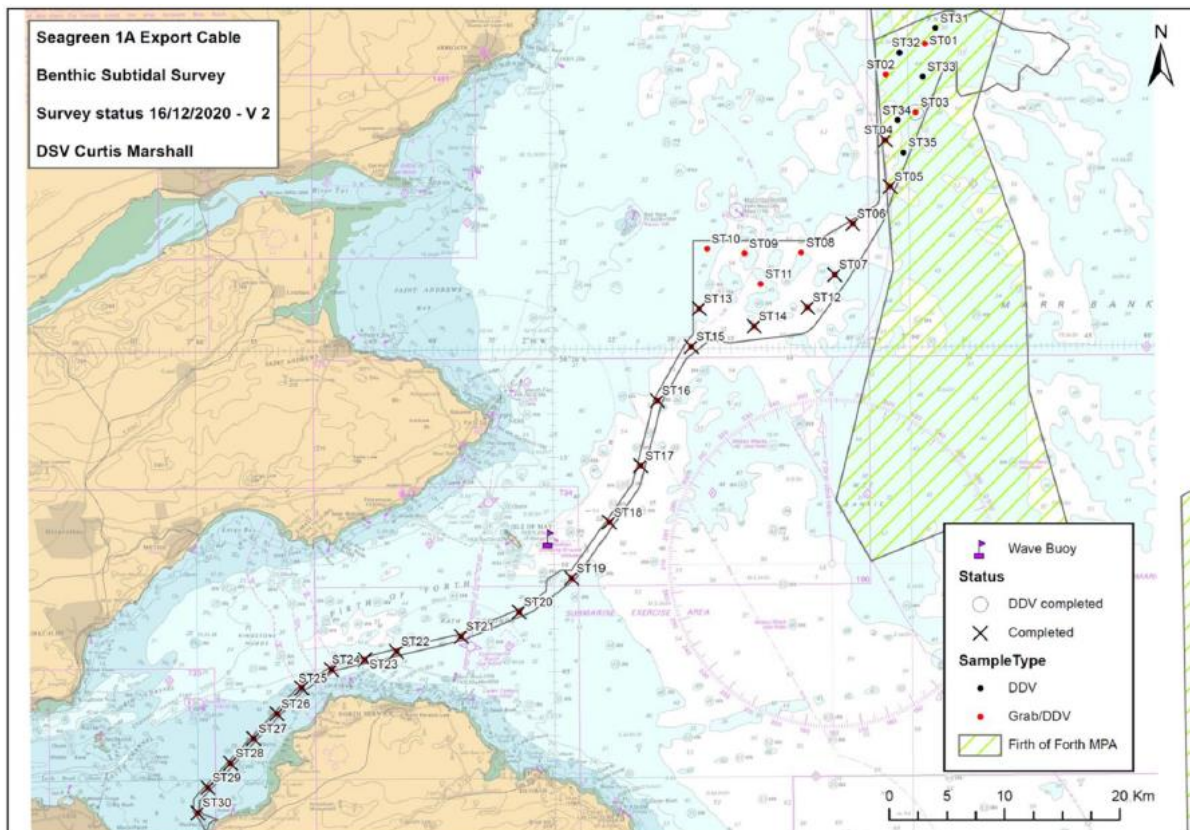
1. Area of Planned Activity.

A Benthic survey will take place with sampling at various locations within the proposed Seagreen Phase 1A Export Cable corridor which were not completed in the previous December 2020 survey. The coordinates of the survey locations are provided in the following table and shown in the map below.

ID	Latitude (DDM WGS 84)	Longitude (DDM WGS 84)
ST01	56° 34.039' N	1° 58.156' W
ST02	56° 32.640' N	2° 1.486' W
ST03	56° 30.855' N	1° 59.016' W

NOTICE TO MARINERS

ID	Latitude (DDM WGS 84)	Longitude (DDM WGS 84)
ST08	56° 24.457' N	2° 8.809' W
ST09	56° 24.450' N	2° 13.596' W
ST10	56° 24.680' N	2° 16.747' W
ST11	56° 23.019' N	2° 12.271' W
ST31	56° 34.770' N	1° 57.227' W
ST32	56° 33.640' N	2° 0.319' W
ST33	56° 32.512' N	1° 58.374' W
ST34	56° 30.497' N	2° 0.556' W
ST35	56° 28.995' N	2° 0.093' W



2. Activity Description.

On behalf of Seagreen Offshore Windfarm Ltd, RPS Group will conduct a Benthic survey within the northern portion of the proposed export cable corridor for the Seagreen Phase 1A project. The Survey Vessel, Curtis Marshall is expected to arrive at site on or around Wednesday the 31st March, the survey is expected to be concluded by the 30th of April, weather conditions permitting.

Curtis Marshall will utilise drop down video (DDV) equipment to obtain video footage and still images and a grab sampler to obtain seabed sediment samples.

NOTICE TO MARINERS

3. Vessel associated with this activity.

Vessel Name – Curtis Marshall	
General Description and Dimensions:	Survey Vessel – LOA 27m, beam 8m, draught – 2.8m
Call Sign:	2HWN3
MMSI:	235107219
Satellite communications details	N/A
Direct Bridge/ Masters Number	+44 1642843050
Onshore Representative:	Nick Calvert - +44(0) 7545127335 nick@mjmuk.com
Onboard Survey representative	Jim Butcher - 07721 765866.



4. General Safety Advice

The survey vessel will exhibit appropriate lights and shapes prescribed by the International Regulations for Preventing Collisions at Sea; relative to their operations. All vessels engaged in the activity will also transmit an Automatic Identification System (AIS) message.

NOTICE TO MARINERS



ALL VESSELS ARE REQUESTED to give the survey vessel engaged in the Benthic DDV survey activity a wide berth.

MARINERS ARE REMINDED to navigate with caution and keep continued watch on VHF Ch. 70 & 16 when navigating the area.

5. Distribution List

A central list of recipients is maintained by the Marine Coordinator; if you are not the appropriate recipient of these notices, or do not wish to receive the notices in the future, please contact us at the address included in Section 1 of this notice.