

NOTICE TO MARINERS



Notice of works associated with construction activities on Seagreen Offshore Wind Farm

Date of Issue	24/02/2022	Notice Number	03/2022
---------------	-------------------	---------------	----------------

Seagreen Offshore Wind Farm – Offshore Sub-station Topside Installation

Contact Details for Marine Coordination and Fisheries Liaison

The following contact can provide more information if required:

Telephone Number, 24/7	+44 (0) 333 344 5255
Duty Marine Coordinator	seagreenmarinecoordination@sse.com
Address	Seagreen Wind Energy Ltd, Inchbraoch House Montrose Port Authority, South Quay Ferryden, Montrose, Angus DD10 9SL.

Fisheries liaison is coordinated by Brown and May Marine Ltd. For all fisheries enquiries, John Watt is primary contact:

Telephone Number	+44 (0) 1379872144
Mobile number	+44 (0) 7590 880746
Email	John.Watt@Brownmay.com
Address	Brown and May Marine Progress Way Mid Suffolk Business Park Eye, Suffolk IP23 7HU

1. Area of planned activity.

The Seagreen offshore wind farm sub-station platform topside structure will be installed at the location shown below in fig 1, coordinates as shown below in table 1.

NOTICE TO MARINERS

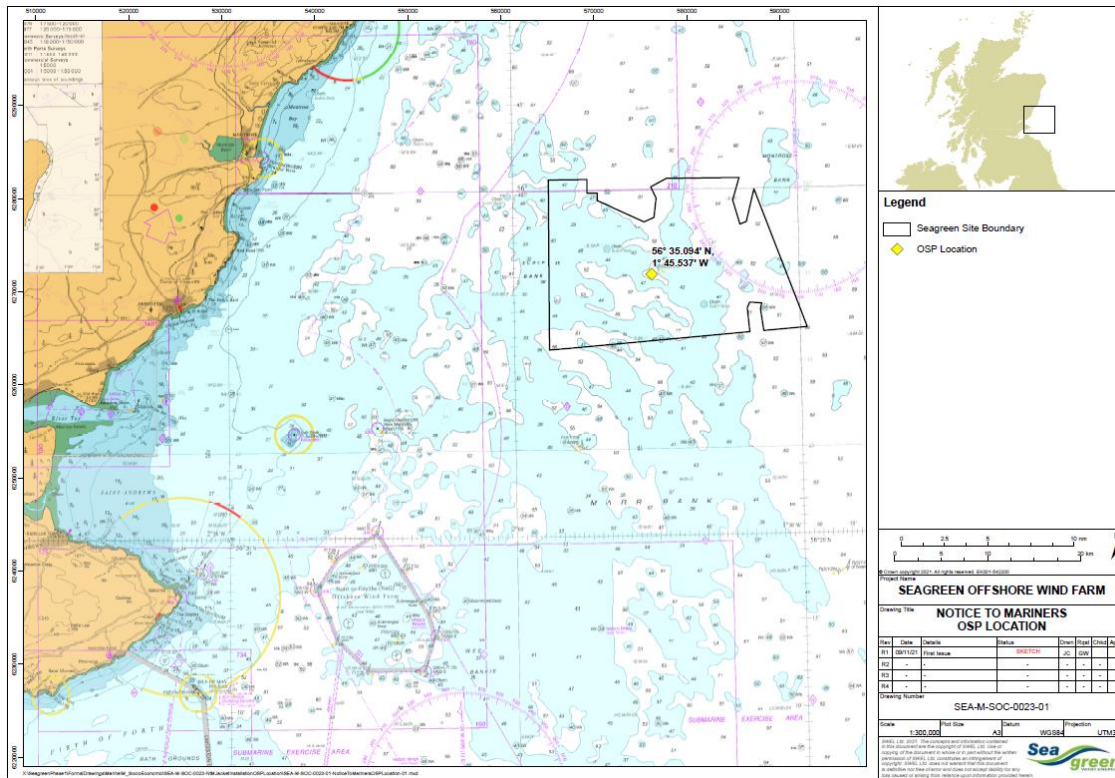


Fig 1 – Sub-station platform location

Sub-station jacket	Latitude (DDM WGS 84)	Longitude (DDM WGS 84)
	56° 35.094' N	1° 45.537' W

Table 1 – Sub-station platform coordinates

2. Activity Description.

On behalf of Seagreen Wind Energy Ltd, Petrofac will install the Seagreen offshore sub-station topside structure.

The topside structure will be lifted from the Heavy Transport Vessel Sun Rise by the Heavy Lift Vessel Thialf.

Once in position the Thialf will lift the topside structure from the HTV Sun Rise and install it into the Sub-station platform jacket.

There shall be four vessels involved in substation topside structure installation activities. The Heavy Transport Vessel Sun Rise will transport the topside structure to the work site. The Heavy Lift Vessel Thialf will lift the topside structure and install it to the jacket platform.

There shall also be two support tugs in attendance, AHT Kolga and AHT En Avant 30

The Heavy Transport Vessel Sun Rise is expected to arrive at the Seagreen site on the 2nd of March, the Heavy Lift Vessel Thialf is expected on the 3rd of March with lifting operations expected to commence on the 4th of March although these dates may be delayed by any unfavourable weather conditions

NOTICE TO MARINERS

A picture of the Sub-Station topside structure aboard the Heavy Transport Vessel Sun Rise is shown below in fig 2.

Details of the vessels involved are shown below in section 3.



Fig 2 – OSP topside structure aboard Heavy Transport Vessel Sun Rise.

3. Vessel associated with this activity.

Vessel Name – Sun Rise	
General Description and Dimensions:	Heavy Transport Vessel: LOA 168.5 x 40m Beam
Call Sign:	V7ZD3
MMSI:	538004795
Bridge telephone number	Inmarsat 870-773-923-056 V-Sat - 070-4467-0594
Onshore representative.	Ram Jeyaraman ram.jeyaraman@petrofac.com

NOTICE TO MARINERS



Vessel Name – Thialf	
General Description and Dimensions:	Heavy Lifting Vessel 201m LOA, 88.4m beam.
Call Sign:	3EAA4
MMSI:	353979000
Bridge telephone number	Inmarsat : +870 7739 36969 & +870 7645 99325
Onshore Representative:	Ram Jeyaraman ram.jeyaraman@petrofac.com

NOTICE TO MARINERS



Vessel Name – AHT Kolga	
General Description and Dimensions:	Anchor Handling Tug 72.0m LOA, 18.4m beam.
Call Sign:	PCTR
MMSI:	244790079
Bridge telephone number	TBC
Onshore Representative:	Ram Jeyaraman ram.jeyaraman@petrofac.com

NOTICE TO MARINERS



Vessel Name – En Avant 30	
General Description and Dimensions:	Anchor Handling Tug 40.7m LOA, 14.4m beam.
Call Sign:	PBPT
MMSI:	244090107
Bridge telephone number	TBC
Onshore Representative:	Ram Jeyaraman ram.jeyaraman@petrofac.com

NOTICE TO MARINERS



4. General Safety Advice

All vessels involved in construction activities will exhibit appropriate lights and day-time shapes prescribed by the International Regulations for Preventing Collisions at Sea, relative to operations. The vessel will also transmit an Automatic Identification System (AIS) message.

4.1 Safety Zones

Following consideration by Scottish government ministers it has been agreed that during the construction phases of the Seagreen development mandatory rolling 500m safety zones will be established around each Wind Turbine Generator and/or their foundations whilst construction works are in progress, as indicated by the presence of a construction vessel. The safety zones will be triggered whenever a vessel is on station at a WTG and undertaking construction activities.

In addition, mandatory pre commissioning 50m safety zones will be established around each Wind Turbine Generator and/or their foundations when construction works have been completed but prior to Wind Farm commissioning or where construction works have only been partially completed. These safety zones will be active at any structure during the construction phase where a construction vessel is not present at a Wind Turbine Generator.

MARINERS ARE REMINDED to navigate with caution and keep continued watch on VHF Ch.70/16 when navigating the area.

5. Distribution List

A central list of recipients is maintained by the Marine Coordinator; if you are not the appropriate recipient of these notices, or do not wish to receive the notices in the future, please contact us at the address shown in this notice.