

NOTICE TO MARINERS



Notice of activities associated with survey operations on Seagreen Offshore Wind Farm

Date of Issue	12-08-21	Notice Number	16-2021 Revision 1.
---------------	----------	---------------	---------------------

Seagreen Phase 1A Export Cable Landfall Geotechnical Survey

Contact Details for Marine Coordination and Fisheries Liaison

The following contact can provide more information if required:

Telephone Number (Day Operations)	+44 (0) 333 344 5255
Email for Duty Marine Coordinator	seagreenmarinecoordination@sse.com
Address	Seagreen Wind Energy Ltd, Inchbraoch House Montrose Port Authority, South Quay Ferryden, Montrose, Angus DD10 9SL.

Fisheries liaison is coordinated by Brown and May Marine Ltd. For all fisheries enquiries, Alex Winrow-Giffin is primary contact:

Telephone Number	+44 (0) 1379872144
Mobile number	+44 (0) 7760 160039
Email	Alex@brownmay.com
Address	Brown and May Marine Progress Way Mid Suffolk Business Park Eye, Suffolk IP23 7HU

1. Area of Planned Activity.

A geotechnical survey will take place within the proposed Seagreen Phase 1A export cable landfall area situated close to the shoreline at Cockenzie in the Firth of Forth. The coordinates of the survey center line are provided in the following table, the survey area is shown below in Fig 1.

Latitude (DDM WGS 84)	Longitude (DDM WGS 84)
55° 58.042'N	2° 58.926'W

NOTICE TO MARINERS

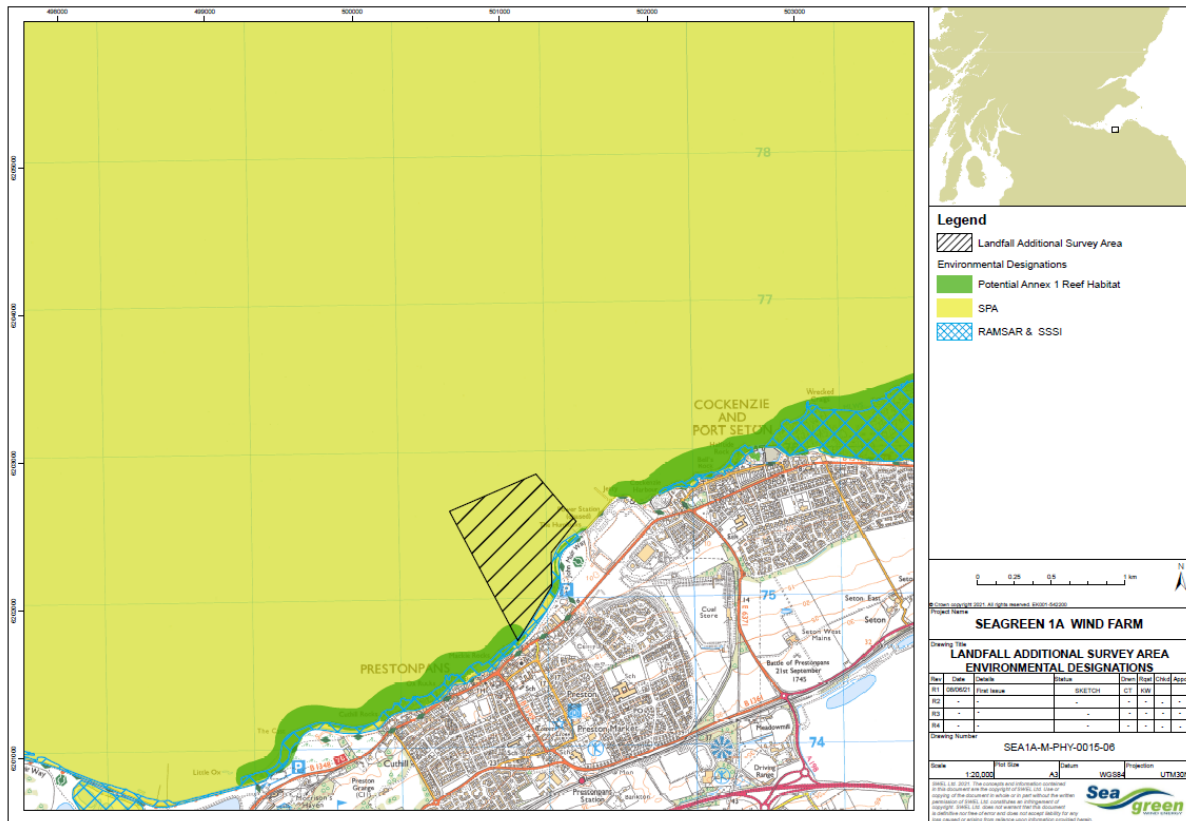


Fig 1.

2. Activity Description.

The jack-up platform Skate 3E will undertake a shallow geotechnical survey involving seabed cone penetration tests and vibrocore samples within the proposed Seagreen Phase 1A export cable landfall area close to Cockenzie in the Firth of Forth. The jack-up platform will be towed from Burntisland to the survey location by the tug MTS Viking and is expected to arrive at site on or around the 15th of August with the works expected to be completed in 14 days.

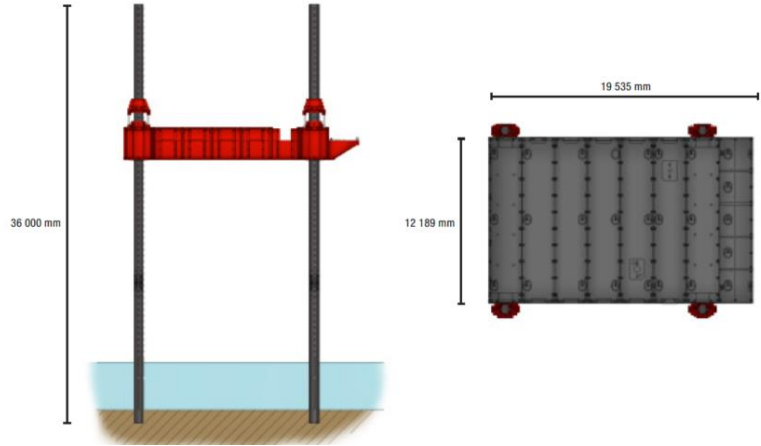
3. Vessel associated with this activity.

Vessel Name – Skate 3E	
General Description and Dimensions:	Modular jack-up platform 19.5m x 14m.
Call Sign:	J8B5005
MMSI:	375285000
Direct Bridge/ Masters Number	Barge Master 07:00 to 19:00 – James Wilson +44 (0) 7896 697278 jimmy.wilson@fugro.com Supervisor 19:00 to 07:00 – Mark Heims +44 (0) 7512 989995 m.heims@fugro.com
Onshore Representative:	Andi Hagan, Project Manager +44 (0) 7964 010040

NOTICE TO MARINERS



a.hagan@fugro.com



Vessel Name – MTS Viking	
General Description and Dimensions:	Tug - 21.5m x 9m x 2.2m
Call Sign:	MCYN9
MMSI:	232015091
Direct Bridge/ Masters Number aboard Skate 3E.	Barge Master 07:00 to 19:00 – James Wilson +44 (0) 7896 697278 jimmy.wilson@fugro.com Supervisor 19:00 to 07:00 – Mark Heims +44 (0) 7512 989995 m.heims@fugro.com
Onshore Representative:	Andi Hagan, Project Manager +44 (0) 7964 010040 a.hagan@fugro.com

NOTICE TO MARINERS



4. General Safety Advice

All vessels will exhibit appropriate lights and shapes prescribed by the International Regulations for Preventing Collisions at Sea; relative to their operations. The platform will also transmit an Automatic Identification System (AIS) message.

ALL VESSELS ARE REQUESTED to give the MTS Viking & Skate 3E at least 500m safety clearance.

MARINERS ARE REMINDED to navigate with caution and keep continued watch on VHF Ch.70/16 when navigating the area.

5. Distribution List

A central list of recipients is maintained by the Marine Coordinator; if you are not the appropriate recipient of these notices, or do not wish to receive the notices in the future, please contact us at the address included in Section 1 of this notice.