

NOTICE TO MARINERS



Notice to Mariners associated with survey operations on Seagreen Offshore Wind Farm

Date of Issue	22/10/20	Notice Number	06/2020
---------------	----------	---------------	---------

GEOPHYSICAL & UNEXPLODED ORDNANCE SURVEY

Contact Details for Marine Coordination and Fisheries Liaison

The following contact can provide more information if required:

Telephone Number (Day Operations)	+44 (0) 7932 229828
Email for Marine Coordinator	seagreenmarinecoordination@sse.com
Address	Seagreen Wind Energy Ltd 1 Waterloo Street Glasgow Glasgow G2 6AY

Fisheries liaison is coordinated by Brown and May Marine Ltd. For all fisheries enquiries, Alex Winrow-Giffin is primary contact:

Telephone Number	+44 (0) 1379872144
Mobile number	+44 (0) 7760 160039
Email	Alex@brownmay.com
Address	Brown and May Marine Progress Way Mid Suffolk Business Park Eye, Suffolk IP23 7HU

An Offshore Fisheries Liaison officer will be on board the survey vessel.

1. Area of Planned Activity.

Mariners are advised that Nexans AS will be conducting a Geophysical and Unexploded Ordnance survey on behalf of Seagreen Wind Energy. The survey will take place within the Seagreen Alpha and Seagreen Bravo export cable corridor (demarcated in blue) identified below in Figure 1, with the respective co-ordinates listed in Table 1.

NOTICE TO MARINERS



Table 1 – Site Boundary Coordinates

No.	Lat	Long	No.	Lat	Long
1	56° 29.633' N	2° 42.596' W	15	56° 34.307' N	1° 47.572' W
2	56° 30.355' N	2° 36.155' W	16	56° 34.760' N	1° 51.254' W
3	56° 31.970' N	2° 30.614' W	17	56° 35.385' N	1° 52.601' W
4	56° 33.916' N	2° 25.019' W	18	56° 35.436' N	1° 53.605' W
5	56° 35.741' N	2° 15.257' W	19	56° 35.210' N	1° 55.174' W
6	56° 36.732' N	2° 9.503' W	20	56° 35.579' N	1° 57.262' W
7	56° 36.117' N	1° 57.212' W	21	56° 36.192' N	2° 9.527' W
8	56° 35.767' N	1° 55.113' W	22	56° 35.086' N	2° 16.700' W
9	56° 35.969' N	1° 53.778' W	23	56° 33.647' N	2° 23.746' W
10	56° 35.893' N	1° 52.205' W	24	56° 31.279' N	2° 30.706' W
11	56° 35.260' N	1° 50.861' W	25	56° 29.790' N	2° 36.120' W
12	56° 34.855' N	1° 47.631' W	26	56° 29.195' N	2° 43.062' W
13	56° 35.298' N	1° 45.865' W			
14	56° 34.817' N	1° 45.417' W			

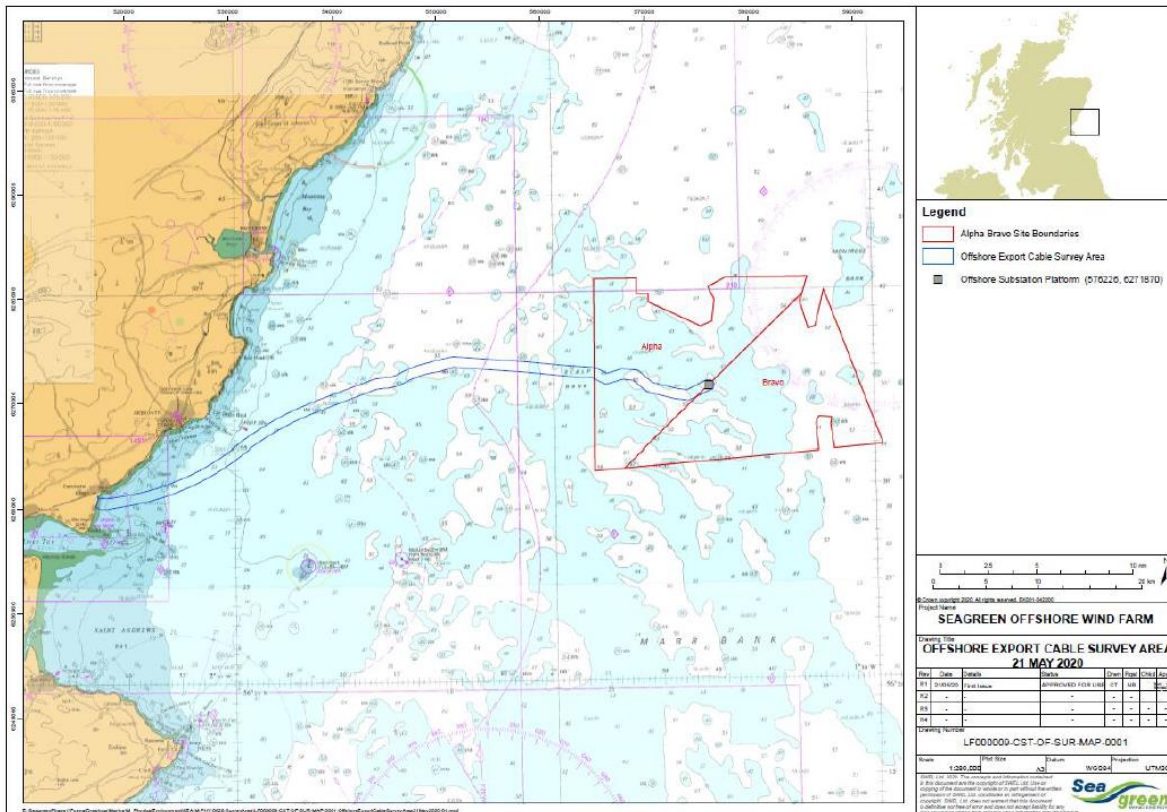


Figure 1: Export Cable route and Site Boundary

NOTICE TO MARINERS



2. Activity Description.

On behalf Seagreen Wind Energy, Nexans AS will be conducting a Geophysical and Unexploded Ordnance survey within the Seagreen Offshore Windfarm Export cable route. The survey vessel is expected on site on the 30th of October though this may be delayed because of weather conditions or operational requirements. The expected duration of the works is 1 week (weather permitting, therefore there may be the potential for an extension to the work duration). The survey work will be conducted from the Offshore Supply vessel MV Olympic Artemis.

Survey Tasks

- 1) A remotely operated vehicle (ROV) will be deployed over the side of the vessel and survey will be executed within the boundaries of the export cable corridor.
- 2) During the survey campaign the vessel will be deploying a ROV. During such times the survey vessels will have restricted ability to manoeuvre and therefore all other vessels are requested to fully comply with COLREGS obligations in respect of this.
- 3) As a consequence of the survey equipment deployed and the modes of operation all mariners are advised to keep a safe clearance of no less than 500m aft of the vessel.

3. Vessel associated with this activity.

Vessel Name – MV Olympic Artemis	
General Description and Dimensions:	Offshore Supply vessel. 87.75 LOA, 19m beam, 6.35m draught
Call Sign:	LAFV8
MMSI:	257040610
Satellite communications details	N/A
Direct Bridge/ Masters Number	+47 23676430/ +47 23676431
Onshore Representative:	Tor Andre Remøy (Olympic) Kenneth Leverskjær (iSURVEY)
Offshore Fisheries Liaison Officer	Karl Kristoffer Angelsen +47 915 86027

NOTICE TO MARINERS



4. General Safety Advice

All vessels engaged in the survey activity will exhibit appropriate lights and shapes prescribed by the International Regulations for Preventing Collisions at Sea; relative to their operations. All vessels engaged in the activity will also transmit an Automatic Identification System (AIS) message.

ALL VESSELS ARE REQUESTED to give the vessel engaged in the Geophysical & UXO Survey activity a wide berth and keep a safe clearance of no less than 500m aft of the vessel.

MARINERS ARE REMINDED to navigate with caution and keep continued watch on VHF Ch. 70 / 16 when navigating the area.

5. Distribution List

A central list of recipients is maintained by the Marine Coordinator; if you are not the appropriate recipient of these notices, or do not wish to receive the notices in the future, please contact us at the address included in Section 1 of this notice.