

# NOTICE TO MARINERS



## Notice to Mariners associated with construction activities on Seagreen Offshore Wind Farm

Date of Issue	18-02-2022	Notice Number	01-2022 Revision 1
---------------	------------	---------------	--------------------

### Seagreen Offshore Wind Farm – Export Cable Installation Revision 1.

#### Contact Details for Marine Coordination and Fisheries Liaison

The following contact can provide more information if required:

Telephone Number (Day Operations)	+44 (0) 333 344 5255
Email for Marine Coordinator	<a href="mailto:seagreenmarinecoordination@sse.com">seagreenmarinecoordination@sse.com</a>
Address	Seagreen Wind Energy Ltd 1 Waterloo Street Glasgow Glasgow G2 6AY

Fisheries liaison is coordinated by Brown and May Marine Ltd. For all fisheries enquiries, John Watt is primary contact:

Telephone Number	+44 (0) 1379872144
Mobile number	+44 (0) 7590 880746
Email	<a href="mailto:John.Watt@Brownmay.com">John.Watt@Brownmay.com</a>
Address	Brown and May Marine Progress Way Mid Suffolk Business Park Eye, Suffolk IP23 7HU

#### 1. Area of planned activity

Export cable installation activities have commenced between the Carnoustie export cable landfall site and the Seagreen Offshore Substation Platform. Three export cables will be pulled into the landfall site at Carnoustie and surface laid to the Seagreen offshore site where they will be pulled into the platform. The three cables will also be trenched to a pre-determined depth. Seagreen export cable corridor and site boundary are shown below in fig 1, coordinates of the site boundary are listed in table 1.

An update on installation activities is below in section 2.

# NOTICE TO MARINERS

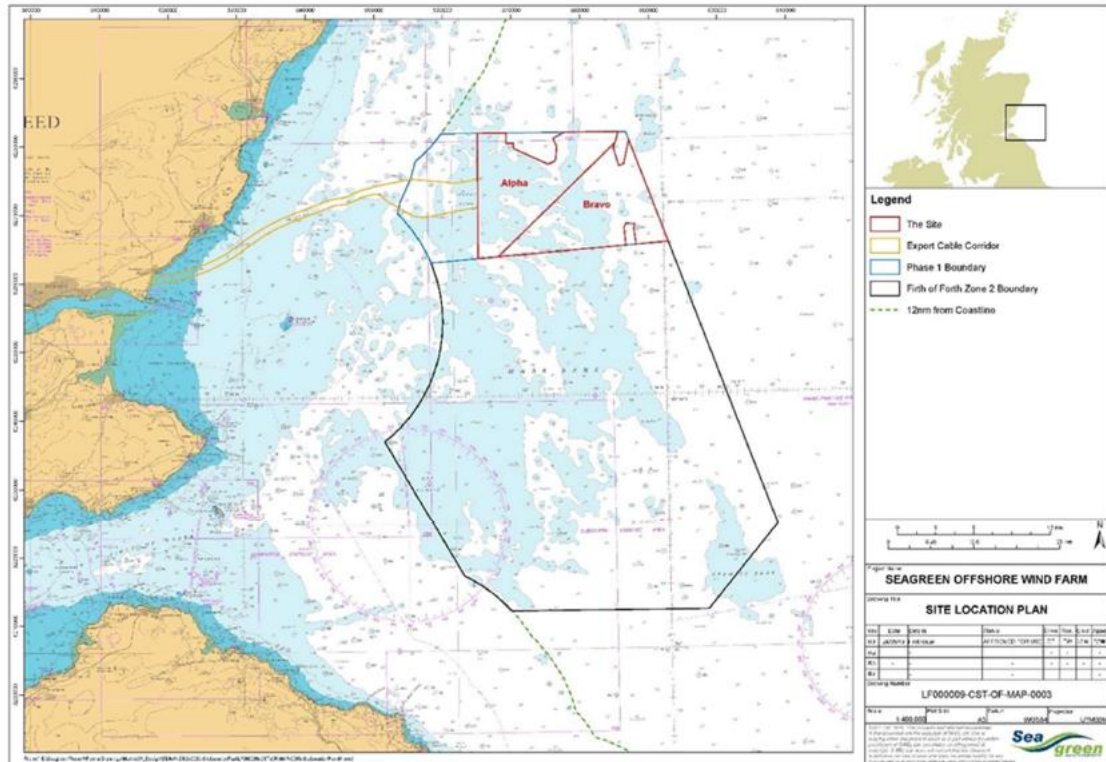


Fig 1 – Seagreen export cable corridor in yellow, site boundary – in red

ID	Latitude (DDM WGS 84)	Longitude (DDM WGS 84)
01	56° 40.631' N	1° 43.829' W
02	56° 40.606' N	1° 36.151' W
03	56° 39.317' N	1° 36.884' W
04	56° 37.913' N	1° 36.151' W
05	56° 39.923' N	1° 34.627' W
06	56° 31.903' N	1° 29.311' W
07	56° 31.724' N	1° 33.882' W
08	56° 32.983' N	1° 34.195' W
09	56° 33.051' N	1° 35.583' W
10	56° 31.666' N	1° 35.352' W
11	56° 30.803' N	1° 56.378' W
12	56° 40.653' N	1° 56.226' W
13	56° 40.648' N	1° 52.170' W
14	56° 39.836' N	1° 51.101' W
15	56° 38.138' N	1° 46.249' W
16	56° 38.383' N	1° 45.181' W
17	56° 40.157' N	1° 45.487' W

Table 1 – Site boundary coordinates

# NOTICE TO MARINERS



## 2. Activity Description.

On behalf of Seagreen Wind Energy Ltd, Nexans AS have commenced the installation of the first of three Seagreen export cables.

Export cable number 1 has been pulled into the landfall site at Carnoustie and surface laid to the vicinity of the Seagreen Offshore Substation Platform.

Prior to pull in operations at the offshore platform the cable has been wet stowed on the seabed in the vicinity of the platform. The wet stow arrangement for the cable is shown below in Fig 2, the cable end coordinates are shown below in table 2.

Cable protection trenching operations have commenced at the Carnoustie landfall site. A Capjet trenching tool will be utilised to bury the export cable to a pre-determined depth. This operation is expected to be completed within 2-3 weeks. The deployment of the Capjet trenching tool can be seen below in Fig 3.

There shall be five vessels utilised during this operation. Nexans Aurora will now conduct cable protection trenching operations between the landfall site and sub-station platform. During pull-in operations at the sub-station platform the Manor Venture crew transfer vessel will deploy teams to the platform. Three guard vessels will be deployed to guard the surface laid cable.

Details of when the cable will be pulled into the Offshore Platform will be promulgated in an update to this notice.

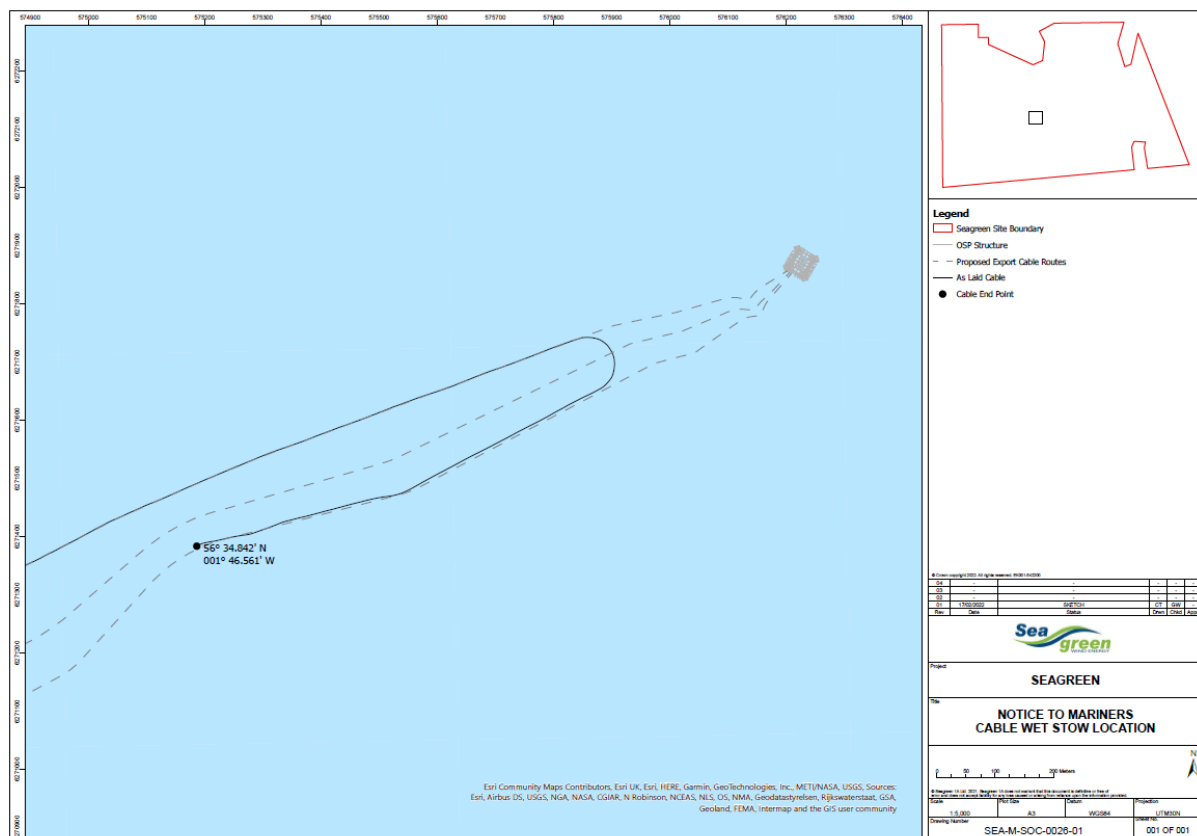


Fig 2 – Export cable 1 wet stow arrangement.

ID	Latitude (DDM WGS 84)	Longitude (DDM WGS 84)
Cable end coordinates.	56° 34.842' N	1° 46.561' W

Table 2 – Export cable 1 wet stow cable end coordinates.

# NOTICE TO MARINERS



Fig 3 – Capjet trenching tool deployment.

### 3. Vessel associated with this activity.

Vessel Name – Nexans Aurora.	
<b>General Description and Dimensions:</b>	Cable lay vessel 156.4m LOA, 31.2m beam, 6.6m draught
<b>Call Sign:</b>	LALC8
<b>MMSI:</b>	257682000
<b>Satellite communications details</b>	V-Sat Number - +47 23411094
<b>Direct Bridge/ Masters Number</b>	Inmarsat - 425768210 / 425768211
<b>Onshore Representative:</b>	Geir Korstad – Installation Manager +47 950 20 634.

# NOTICE TO MARINERS



Vessel Name – Manor Venture	
<b>General Description and Dimensions:</b>	Crew Transfer Vessel 27m LOA, 12.0m beam, 2.5m draught
<b>Call Sign:</b>	MAWI6
<b>MMSI:</b>	232007444
<b>Direct Bridge/ Masters Number</b>	Mobile – 07407 345854
<b>Onshore Representative:</b>	Geir Korstad – Installation Manager +47 950 20 634.



There shall be three guard vessels deployed to guard the surface laid cable between the landfall site and the offshore platform location, the three vessels shall be Shemarah II, Fisher Boys and Ocean Quest, details of the guard vessels are shown below.

Vessel Name – Shemarah II LH65	
<b>General Description and Dimensions:</b>	CTV- 27.0m LOA, 8.0m beam.
<b>Call Sign:</b>	MVRR7
<b>MMSI:</b>	232007650

# NOTICE TO MARINERS

<b>Direct Bridge/ Masters Number</b>	Sat phone - 00 33 640 047155
<b>Onshore Representative:</b>	Geir Korstad – Installation Manager +47 950 20 634.



<b>Vessel Name – Fisher Boys FR54</b>	
<b>General Description and Dimensions:</b>	CTV- 20.0m LOA, 6.0m beam.
<b>Call Sign:</b>	MXHY7
<b>MMSI:</b>	234750000
<b>Direct Bridge/ Masters Number</b>	07801 536983
<b>Onshore Representative:</b>	Geir Korstad – Installation Manager +47 950 20 634.



<b>Vessel Name – Ocean Quest FR375</b>	
<b>General Description and Dimensions:</b>	CTV- 21.0m LOA, 6.0m beam.
<b>Call Sign:</b>	MSBS6
<b>MMSI:</b>	232004618
<b>Direct Bridge/ Masters Number</b>	07398 215602

# NOTICE TO MARINERS

<b>Onshore Representative:</b>	Geir Korstad – Installation Manager +47 950 20 634.
	

## 4. General Safety Advice

Due to the vessels' mode of operation and equipment used they will at times be restricted in their ability to manoeuvre.

All vessels will exhibit appropriate lights and shapes prescribed by the International Regulations for Preventing Collisions at Sea; relative to their operations. The vessel will also transmit an Automatic Identification System (AIS) message.

### 4.1 Safety Zones

Following consideration by Scottish government ministers it has been agreed that during the construction phases of the Seagreen development mandatory rolling 500m safety zones will be established around each Wind Turbine Generator and/or their foundations whilst construction works are in progress, as indicated by the presence of a construction vessel. The safety zones will be triggered whenever a vessel is on station at a WTG and undertaking construction activities.

In addition, mandatory pre commissioning 50m safety zones will be established around each Wind Turbine Generator and/or their foundations when construction works have been completed but prior to Wind Farm commissioning or where construction works have only been partially completed. These safety zones will be active at any structure during the construction phase where a construction vessel is not present at a Wind Turbine Generator.

**MARINERS ARE REMINDED** to navigate with caution and keep continued watch on VHF Ch.70/16 when navigating the area.

## 5. Distribution List

# NOTICE TO MARINERS



A central list of recipients is maintained by the Marine Coordinator; if you are not the appropriate recipient of these notices, or do not wish to receive the notices in the future, please contact us at the address included in Section 1 of this notice.