

NOTICE TO MARINERS



Notice of construction activities on Seagreen Offshore Wind Farm

Date of Issue	24/09/2021	Notice Number	24/2021
---------------	------------	---------------	---------

Seagreen Offshore Wind Farm – Wind Turbine Generator Foundation Installation.

Contact Details for Marine Coordination and Fisheries Liaison

The following contact can provide more information if required:

Telephone Number, 24/7	+44 (0) 333 344 5255
Duty Marine Coordinator	seagreenmarinecoordination@sse.com
Address	Seagreen Wind Energy Ltd, Inchbraoch House Montrose Port Authority, South Quay Ferryden, Montrose, Angus DD10 9SL.

Fisheries liaison is coordinated by Brown and May Marine Ltd. For all fisheries enquiries, John Watt is primary contact:

Telephone Number	+44 (0) 1379872144
Mobile number	+44 (0) 7590 880746
Email	John.Watt@Brownmay.com
Address	Brown and May Marine Progress Way Mid Suffolk Business Park Eye, Suffolk IP23 7HU

1. Area of planned activity.

Wind turbine generator foundation installation will commence within the site boundary of the Seagreen offshore wind farm. Coordinates of the Seagreen site boundary are shown below in table 1 and fig 1.

ID	Latitude (DDM WGS 84)	Longitude (DDM WGS 84)
01	56° 40.631' N	1° 43.829' W
02	56° 40.606' N	1° 36.151' W
03	56° 39.317' N	1° 36.884' W
04	56° 37.913' N	1° 36.151' W
05	56° 39.923' N	1° 34.627' W
06	56° 31.903' N	1° 29.311' W

NOTICE TO MARINERS

ID	Latitude (DDM WGS 84)	Longitude (DDM WGS 84)
07	56° 31.724' N	1° 33.882' W
08	56° 32.983' N	1° 34.195' W
09	56° 33.051' N	1° 35.583' W
10	56° 31.666' N	1° 35.352' W
11	56° 30.803' N	1° 56.378' W
12	56° 40.653' N	1° 56.226' W
13	56° 40.648' N	1° 52.170' W
14	56° 39.836' N	1° 51.101' W
15	56° 38.138' N	1° 46.249' W
16	56° 38.383' N	1° 45.181' W
17	56° 40.157' N	1° 45.487' W

Table 1 – Site boundary coordinates

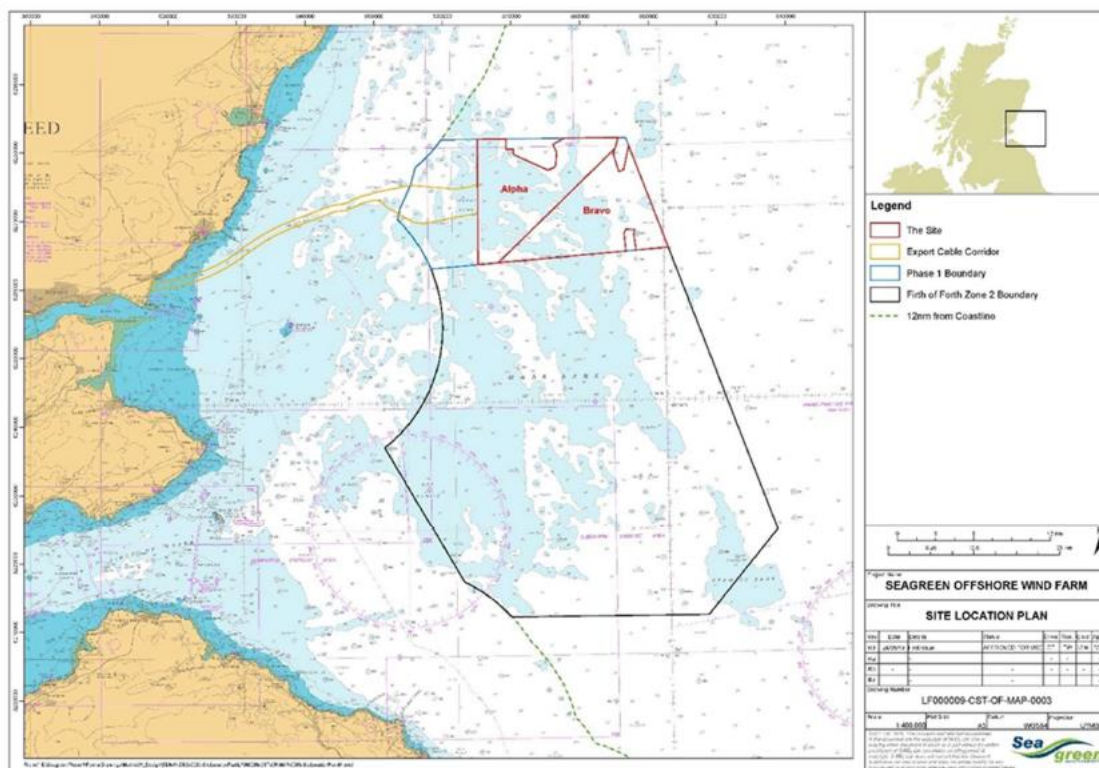


Fig 1 – Seagreen site boundary – in red.

2. Activity Description.

On behalf of Seagreen Wind Energy Ltd. Seaway 7 will commence the installation of 114, three-legged suction caisson wind turbine generator foundation structures.

The foundation structures will be towed on a barge from Nigg, Cromarty. On arrival at the Seagreen development site they will be installed by the heavy lift vessel Saipem 7000. The tug Nicobar will assist the Saipem 7000 with barge mooring operations. Foundation grouting operations will take place from the EDT Hercules.

The associated vessels are expected to arrive at site on or around the 1st of October.

A drawing of the foundation structures is shown below in Fig 2.

NOTICE TO MARINERS

Details of the various vessels involved in the foundation installation are shown below in section 3.

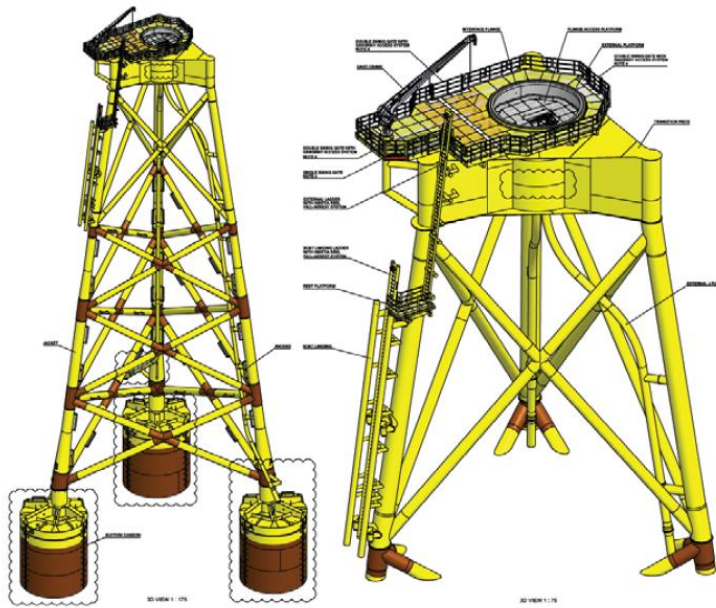



Fig 2 – Suction caisson jacket foundation.

3. Vessels involved in this activity.

Vessel Name – Saipem 7000	
General Description and Dimensions:	Heavy lift vessel: LOA 129.9 x 87m Beam
Call Sign:	C6NOS
MMSI:	309461000
Satellite communications details	Inmarsat 00870773163946 V-Sat 00390252027520
Direct Bridge/ Masters Number	S7000.Captain@Saipem.com S7000.Marine@saipem.com
Onshore Representative:	Frits Van Dorst Frits.vanDorst@subsea7.com +31 (0)62 972 54 02
	

Vessel Name – Tug Nicobar	
General Description and Dimensions:	Tug: LOA 70.9 x 16.0m Beam
Call Sign:	ORRT
MMSI:	205684000
Satellite communications details	Sat +870 773 308935 Mobile +31 621 927 591
Direct Bridge/ Masters Number	nicobar-bridge@boskalis.com
Onshore Representative:	Frits Van Dorst Frits.vanDorst@subsea7.com +31 (0)62 972 54 02
	

NOTICE TO MARINERS



Vessel Name – EDT Hercules	
General Description and Dimensions:	Grouting Vessel: LOA 88.8m x 19.6m Beam
Call Sign:	5BAM4
MMSI:	210776000
Satellite communications details	
Direct Bridge/ Masters Number	
Onshore Representative:	Frits Van Dorst Frits.vanDorst@subsea7.com +31 (0)62 972 54 02
	

Vessel Name – Tug Eraclea	
General Description and Dimensions:	Tug: LOA 50.0m x 15.0m Beam
Call Sign:	IITX2
MMSI:	247278500
Satellite communications details	Sat +870 773 130947 Mobile +39 345 280 8217
Direct Bridge/ Masters Number	eraclea@augustea.com
Onshore Representative:	Frits Van Dorst Frits.vanDorst@subsea7.com +31 (0)62 972 54 02
	


Vessel Name – AHT levoli Blue	
General Description and Dimensions:	Tug: LOA 70.0m x 16.0m Beam
Call Sign:	IBYK
MMSI:	247279900
Satellite communications details	Sat +87 077 3913315 Mobile +39 348 096 0206
Direct Bridge/ Masters Number	ievoliblue@gmail.com
Onshore Representative:	Frits Van Dorst Frits.vanDorst@subsea7.com +31 (0)62 972 54 02
	

Vessel Name – Tug Carlo Martello	
General Description and Dimensions:	Tug: LOA 55.4m x 15.5m Beam
Call Sign:	IBCO
MMSI:	247153600
Satellite communications details	Sat +870 7731 30214 Mobile +39 335 806 9554
Direct Bridge/ Masters Number	carlo.martello@augustea.com
Onshore Representative:	Frits Van Dorst Frits.vanDorst@subsea7.com +31 (0)62 972 54 02
	

NOTICE TO MARINERS



Vessel Name – Tug Kamarina	
General Description and Dimensions:	Tug: LOA 55.4m x 15.5m Beam
Call Sign:	IITW2
MMSI:	247278400
Satellite communications details	Sat +870 773 130505 Mobile +39 345 281 1846
Direct Bridge/ Masters Number	kamarina@augustea.com
Onshore Representative:	Frits Van Dorst Frits.vanDorst@subsea7.com +31 (0)62 972 54 02
	

Barge – Wagenborg 9 & 11, CC Atlantique, AMT Crusader, AMT Challenger,	
General Description and Dimensions:	Barge: LOA 122m x 36.5m Beam
Call Sign:	n/a
MMSI:	n/a
Satellite communications details	n/a
Direct Bridge/ Masters Number	n/a
Onshore Representative:	Frits Van Dorst Frits.vanDorst@subsea7.com +31 (0)62 972 54 02
	

4. General Safety Advice

All vessels involved in the construction of the Seagreen development will exhibit appropriate lights and shapes prescribed by the International Regulations for Preventing Collisions at Sea; relative to their operations. All vessels will also transmit an Automatic Identification System (AIS) message.

MARINERS ARE REMINDED to navigate with caution and keep continued watch on VHF Ch.70/16 when navigating the area. Mariners are further requested to give all vessels involved in foundation installation activities at least 500m minimum passing distance.

5. Distribution List

A central list of recipients is maintained by the Marine Coordinator; if you are not the appropriate recipient of these notices, or do not wish to receive the notices in the future, please contact us at the address shown in this notice.