

# NOTICE TO MARINERS



## Notice of works associated with construction activities on Seagreen Offshore Wind Farm

Date of Issue	14/03/2022	Notice Number	04/2022 Revision 1
---------------	------------	---------------	--------------------

## Seagreen Offshore Wind Farm – Offshore Sub-station Hook-up & Commissioning Activity Revision 1

### Contact Details for Marine Coordination and Fisheries Liaison

The following contact can provide more information if required:

Telephone Number, 24/7	+44 (0) 333 344 5255
Duty Marine Coordinator	seagreenmarinecoordination@sse.com
Address	Seagreen Wind Energy Ltd, Inchbraoch House Montrose Port Authority, South Quay Ferryden, Montrose, Angus DD10 9SL.

Fisheries liaison is coordinated by Brown and May Marine Ltd. For all fisheries enquiries, John Watt is primary contact:

Telephone Number	+44 (0) 1379872144
Mobile number	+44 (0) 7590 880746
Email	John.Watt@Brownmay.com
Address	Brown and May Marine Progress Way Mid Suffolk Business Park Eye, Suffolk IP23 7HU

### 1. Area of planned activity.

A period of hook-up and commissioning activity will commence at the Seagreen Offshore Wind Farm Sub-Station platform. The location of the platform is shown below in fig 1, coordinates are detailed in table 1.

# NOTICE TO MARINERS

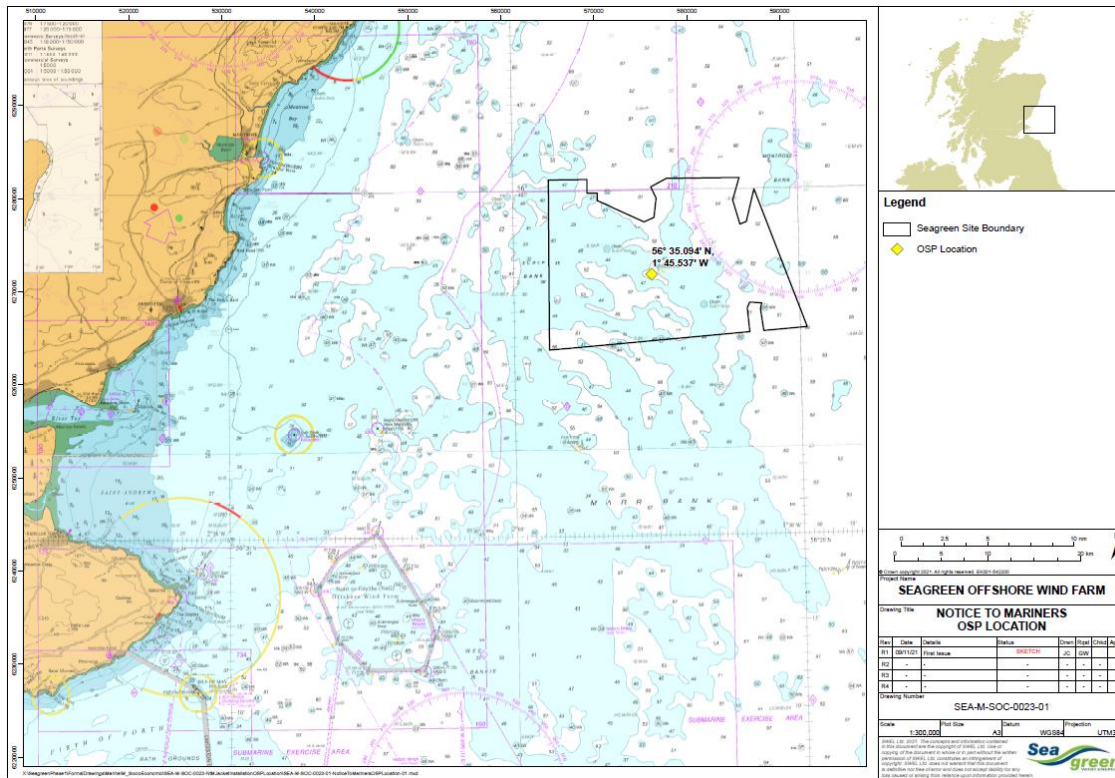


Fig 1 – Sub-station platform location

Sub-station platform	Latitude (DDM WGS 84)	Longitude (DDM WGS 84)
	56° 35.094' N	1° 45.537' W

Table 1 – Sub-station platform coordinates

## 2. Activity Description.

On behalf of Seagreen Wind Energy Ltd, Petrofac will hook-up and commission the Seagreen offshore sub-station platform.

To assist in this activity the Jack Up Barge Borr Ran will be positioned next to the sub-station platform to act as accommodation for those personnel involved.

The Borr Ran Jack Up Barge will be assisted into position by an anchor handling tug and two support tugs. During final positioning a four-point anchor spread will be utilised. Once the barge is positioned the anchor spread will be removed.

During the period the anchor spread is deployed there shall be a 750 metre exclusion zone centred around the sub-station platform, this zone shall apply to all vessels other than those involved in the operation.

Whilst the anchors are deployed they shall be marked by unlit yellow riser buoys, on the port aft anchor cable there shall be two midline buoy systems in use, an example of the anchor mooring arrangement is shown below in fig 2.

One anchor handling tug and two support tugs shall assist the Borr Ran with positioning and deployment of the four-point anchor spread. The anchor handling tug is the Sovereign, support tugs shall be Multratug 18 and Multratug 20. Details of the vessels are shown below in section 3.

# NOTICE TO MARINERS



Weather conditions permitting, the Jack-up barge Borr Ran, anchor handling tug and support tugs are expected to arrive at the Seagreen site on or around Wednesday the 16th of March. Once the vessel is positioned the three support tugs will depart the site, the Borr Ran is then expected to remain on site for a number of months until commissioning activities are complete.

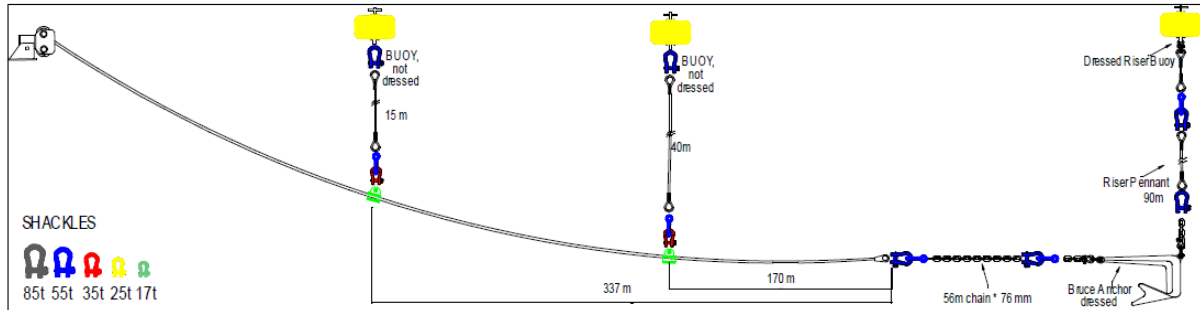



Fig 2 – Anchor spread mooring arrangement.

### 3. Vessel associated with this activity.

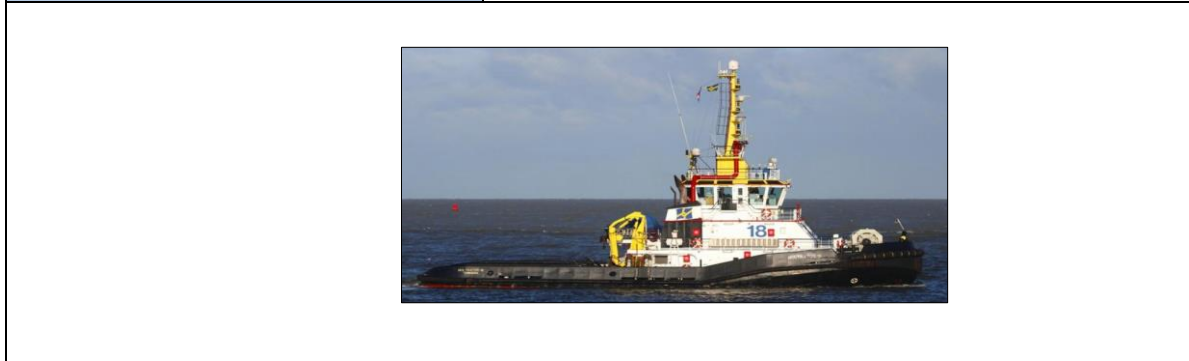
Vessel Name – Borr Ran	
<b>General Description and Dimensions:</b>	Jack up Barge – LOA 74.5m x 83.5 beam 149.9m x 31.0m
<b>Call Sign:</b>	D5DC3
<b>MMSI:</b>	636015838
<b>Offshore Installation Manager Radio room</b>	+44 1224 617410 +44 1244 617412
<b>Onshore Representative:</b>	Ram Jeyaraman ram.jeyaraman@petrofac.com
	

Vessel Name – Sovereign	
<b>General Description and Dimensions:</b>	Anchor handling tug – LOA 67.4m x 15.5 beam
<b>Call Sign:</b>	ORQW
<b>MMSI:</b>	205644000
<b>Direct Bridge/ Masters Number</b>	TBC
<b>Onshore Representative:</b>	Ram Jeyaraman ram.jeyaraman@petrofac.com

# NOTICE TO MARINERS



Vessel Name – Multratug 18	
<b>General Description and Dimensions:</b>	Support tug – LOA 35.7m x 11.5 beam
<b>Call Sign:</b>	PBRY
<b>MMSI:</b>	246566000
<b>Direct Bridge/ Masters Number</b>	+31 651 869 109
<b>Onshore Representative:</b>	Ram Jeyaraman ram.jeyaraman@petrofac.com



Vessel Name – Waterchief	
<b>General Description and Dimensions:</b>	Support tug – LOA 32.5m x 11.7 beam
<b>Call Sign:</b>	3YKJ
<b>MMSI:</b>	257612000
<b>Direct Bridge/ Masters Number</b>	TBC
<b>Onshore Representative:</b>	Ram Jeyaraman ram.jeyaraman@petrofac.com



# NOTICE TO MARINERS



## 4. General Safety Advice

All vessels involved in construction activities will exhibit appropriate lights and day-time shapes prescribed by the International Regulations for Preventing Collisions at Sea, relative to operations. The vessel will also transmit an Automatic Identification System (AIS) message.

### 4.1 Safety Zones

Following consideration by Scottish government ministers it has been agreed that during the construction phases of the Seagreen development mandatory rolling 500m safety zones will be established around each Wind Turbine Generator and/or their foundations whilst construction works are in progress, as indicated by the presence of a construction vessel. The safety zones will be triggered whenever a vessel is on station at a WTG and undertaking construction activities.

In addition, mandatory pre commissioning 50m safety zones will be established around each Wind Turbine Generator and/or their foundations when construction works have been completed but prior to Wind Farm commissioning or where construction works have only been partially completed. These safety zones will be active at any structure during the construction phase where a construction vessel is not present at a Wind Turbine Generator.

**MARINERS ARE REMINDED** to navigate with caution and keep continued watch on VHF Ch.70/16 when navigating the area.

## 5. Distribution List

A central list of recipients is maintained by the Marine Coordinator; if you are not the appropriate recipient of these notices, or do not wish to receive the notices in the future, please contact us at the address shown in this notice.