

NOTICE TO MARINERS



Notice of construction activities on Seagreen Offshore Wind Farm

Date of Issue	26/05/2022	Notice Number	09/2022
---------------	------------	---------------	---------

Seagreen Offshore Wind Farm – Wind Turbine Generator Foundation Installation.

Contact Details for Marine Coordination and Fisheries Liaison

The following contact can provide more information if required:

Telephone Number, 24/7	+44 (0) 333 344 5255
Duty Marine Coordinator	seagreenmarinecoordination@sse.com
Address	Seagreen Wind Energy Ltd, Inchbraoch House Montrose Port Authority, South Quay Ferryden, Montrose, Angus DD10 9SL.

Fisheries liaison is coordinated by Brown and May Marine Ltd. For all fisheries enquiries, John Watt is primary contact:

Telephone Number	+44 (0) 1379872144
Mobile number	+44 (0) 7590 880746
Email	John.Watt@Brownmay.com
Address	Brown and May Marine Progress Way Mid Suffolk Business Park Eye, Suffolk IP23 7HU

1. Area of planned activity.

Wind turbine generator foundation installation will re-commence within the site boundary of the Seagreen offshore wind farm. Coordinates of the Seagreen site boundary are shown below in table 1 and fig 1.

ID	Latitude (DDM WGS 84)	Longitude (DDM WGS 84)
01	56° 40.631' N	1° 43.829' W
02	56° 40.606' N	1° 36.151' W
03	56° 39.317' N	1° 36.884' W
04	56° 37.913' N	1° 36.151' W
05	56° 39.923' N	1° 34.627' W
06	56° 31.903' N	1° 29.311' W

NOTICE TO MARINERS

ID	Latitude (DDM WGS 84)	Longitude (DDM WGS 84)
07	56° 31.724' N	1° 33.882' W
08	56° 32.983' N	1° 34.195' W
09	56° 33.051' N	1° 35.583' W
10	56° 31.666' N	1° 35.352' W
11	56° 30.803' N	1° 56.378' W
12	56° 40.653' N	1° 56.226' W
13	56° 40.648' N	1° 52.170' W
14	56° 39.836' N	1° 51.101' W
15	56° 38.138' N	1° 46.249' W
16	56° 38.383' N	1° 45.181' W
17	56° 40.157' N	1° 45.487' W

Table 1 – Site boundary coordinates

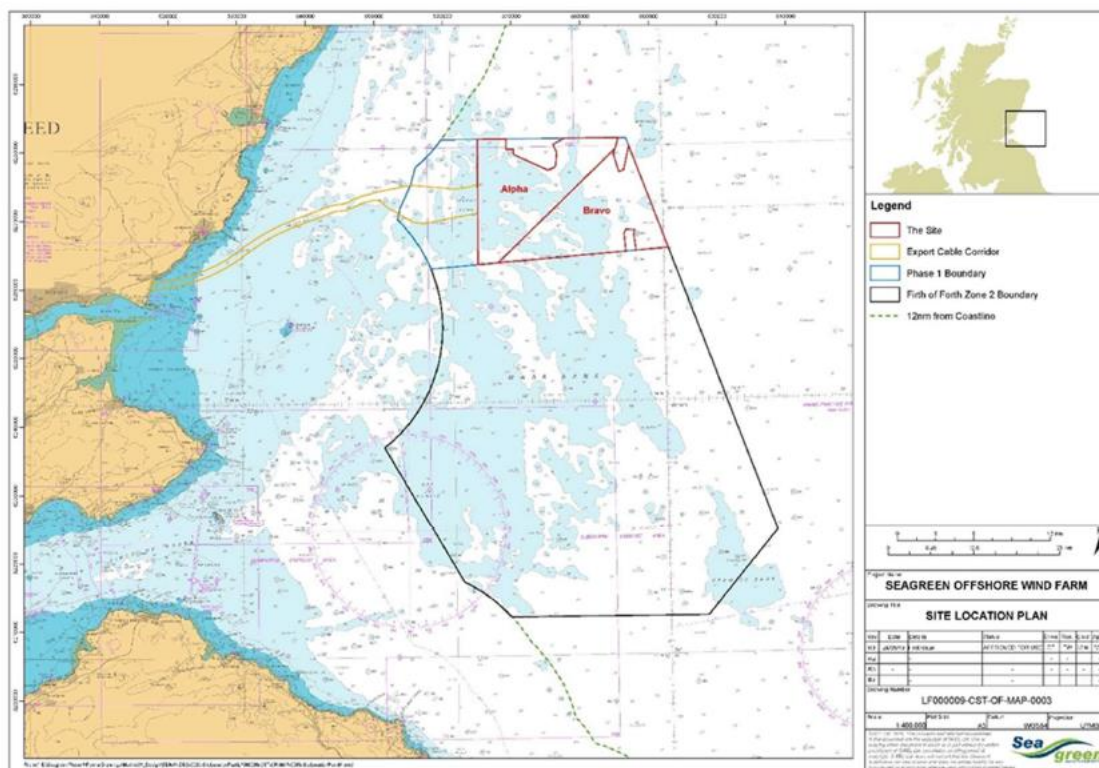


Fig 1 – Seagreen site boundary – in red.

2. Activity Description.

On behalf of Seagreen Wind Energy Ltd. Seaway 7 will re-commence the installation of three-legged suction caisson wind turbine generator foundation structures.

The foundation structures will be towed to the work site on barges from Nigg, Cromarty. On arrival at the Seagreen development site they will be installed by the heavy lift vessel Saipem 7000. There shall be a number of anchor handling tugs and barges involved in transporting the foundation structures from Nigg, Cromarty to the Seagreen work site.

On completion of installation by Saipem 7000 foundation grouting operations will take place from the EDT Hercules.

NOTICE TO MARINERS

Weather conditions permitting the tugs and barges are expected to arrive in the vicinity of the site from the 29th of May onwards, The Saipem 7000 and support vessels are expected to arrive on or around the 1st of June.

A drawing of the foundation structures is shown below in Fig 2

Details of the various vessels involved in the foundation installation are shown below in section 3.

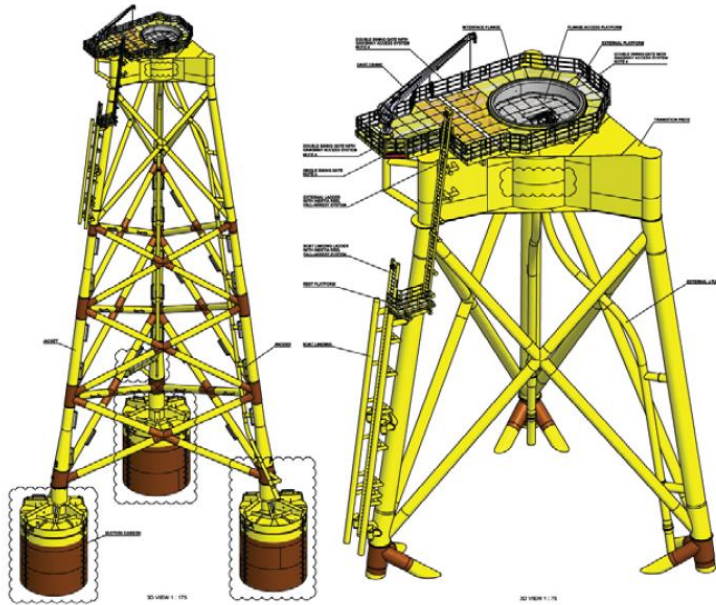



Fig 2 – Suction caisson jacket foundation.

3. Vessels involved in this activity.


Vessel – Saipem 7000 – Heavy Lift Vessel		Contact Details		
	Call Sign	C6N05		
	MMSI	309461000		
	Vessel Details			
	Length	129.9m		
	Beam	87.0m		
	Draft	11.1m		
	All Vessel Contact	George Cooper- Seaway 7 07545 642881		


Vessel – ALP Forward- Anchor Handling Tug		Contact Details		
	Call Sign	PCXN		
	MMSI	244830811		
	Vessel Details			
	Length	64.9m		
	Beam	18.7m		
Draft	6.5m			

NOTICE TO MARINERS

Vessel – Carlo Martello- Anchor Handling Tug		Contact Details	
	Call Sign	IBCO	
	MMSI	247266600	
	Vessel Details		
	Length	55.4m	
	Beam	15.5m	
	Draft	5.7m	

Vessel – Carlo Magno- Anchor Handling Tug		Contact Details	
	Call Sign	IBYF	
	MMSI	247153600	
	Vessel Details		
	Length	55.4m	
	Beam	15.5m	
	Draft	5.7m	


Vessel – Ievoli Blue - Anchor Handling Tug		Contact Details	
	Call Sign	IBYK	
	MMSI	242279900	
	Vessel Details		
	Length	70.0m	
	Beam	15.1m	
	Draft	5.0m	


Vessel – KJ Gardner- Anchor Handling Tug		Contact Details	
	Call Sign	VGCO	
	MMSI	316040483	
	Vessel Details		
	Length	74.5m	
	Beam	17.6m	
	Draft	6.7 m	

NOTICE TO MARINERS




Vessel – EDT Hercules- Grout Installation Vessel		Contact Details	
	Call Sign	5BAM4	
	MMSI	210776000	
	Vessel Details		
	Length	74.5m	
	Beam	17.6m	
	Draft	6.7 m	

Vessel – Ocean Marlin- Supply Vessel		Contact Details	
	Call Sign	MIJX2	
	MMSI	232031682	
	Vessel Details		
	Length	66.8m	
	Beam	16.04m	
	Draft	4.5m	

Vessel – Seagull - Supply Vessel		Contact Details	
	Call Sign	LAGK8	
	MMSI	257504000	
	Vessel Details		
	Length	88.8m	
	Beam	20.0m	
	Draft	5.9m	

The foundation structures will be towed to the work site on a number of barges, the barges are named Challenger, Crusader, Atlantique, Ran, Wagenborg 9 and Wagenborg 11. An example of the barges showing dimensions is below.

Barges		Contact Details	
	Call Sign	N/A	
	MMSI	N/A	
	Vessel Details		
	Length	122m	
	Beam	36.5m	
	Draft	N/A	

NOTICE TO MARINERS



4. General Safety Advice

Mariners are reminded to navigate with caution and keep a continuous watch on VHF Ch 70/16 when navigating in and around the Seagreen area.

All vessels involved in construction activities will exhibit appropriate lights and day-time shapes prescribed by the International Regulations for Preventing Collisions at Sea, relative to operations. The vessel will also transmit an Automatic Identification System (AIS) message.

5. Safety Zones

Following consideration by Scottish government ministers it has been agreed that during the construction phases of the Seagreen development mandatory rolling 500m safety zones will be established around each Wind Turbine Generator and/or their foundations whilst construction works are in progress, as indicated by the presence of a construction vessel. The safety zones will be triggered whenever a vessel is on station at a WTG and undertaking construction activities.

In addition, mandatory pre commissioning 50m safety zones will be established around each Wind Turbine Generator and/or their foundations when construction works have been completed but prior to Wind Farm commissioning or where construction works have only been partially completed. These safety zones will be active at any structure during the construction phase where a construction vessel is not present at a Wind Turbine Generator.

6. Distribution List

A central list of recipients is maintained by the Marine Coordinator; if you are not the appropriate recipient of these notices, or do not wish to receive the notices in the future, please contact us at the address shown in this notice.