

<b>Project Title</b>	Seagreen Wind Energy Ltd
<b>Document Reference Number</b>	LF000009-MIP-MA-MAN-NOT-0001

# Seagreen Offshore Wind Farm.

## Weekly Notice of Operations

### 12/2025

**Issue Date – 17<sup>th</sup> March 2025.**

**Notice of Operations on Seagreen Offshore Wind Farm.**

**Work planned for the period 17-03-25 to 23-03-25.**

**Construction activities commenced on Seagreen Offshore Wind Farm on Thursday 17<sup>th</sup> December 2021. The first phase of the project is now fully operational with all 114 Wind Turbine Generators fully commissioned. As such, Operations and Maintenance activities are underway. There are several outstanding construction activities remaining which will be ongoing during 2025. This notice will be updated weekly giving information on all the activities taking place in the windfarm. Should anyone have any questions regarding construction operations we kindly ask that you put them forward well in advance.**

The Seagreen Offshore Wind Farm is located in the outer Firth of Forth and Firth of Tay region of the North Sea. The site is situated approximately 17.5 nautical miles East-southeast of the Port of Montrose where the project Marine Coordination Centre is located. The development consists of 114 suction bucket foundation structures, with associated 10MW wind turbine generators, 1 HVAC offshore substation platform, associated inter array and export cabling. The generated power is transmitted to the National Grid via three subsea transmission cables making landfall at Carnoustie, Angus. Grid connection has been achieved at the Tealing onshore substation.

The Seagreen development site is highlighted below in red, the export cable corridor is highlighted in blue.

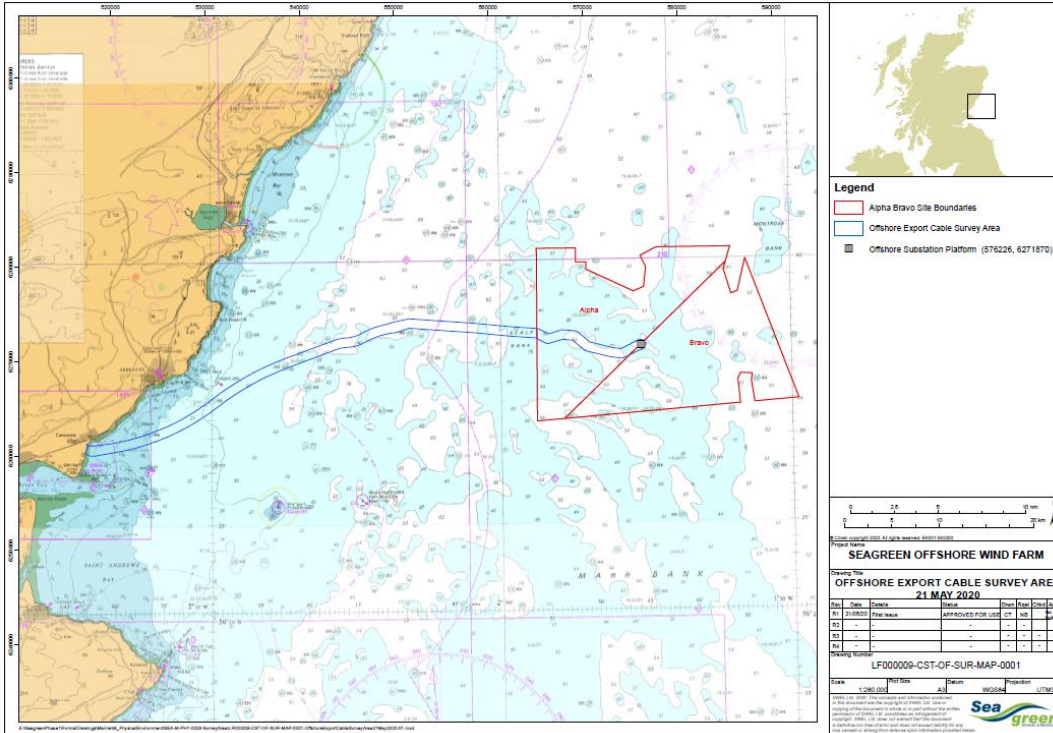


Fig 1 – Seagreen offshore wind farm location and export cable corridor.

## 1. Contact details for Marine Coordination


The following contact can provide more information if required.

Telephone Number (24/7 Operations)	<a href="tel:+441674689401">+44 (0) 1674 689401</a>
Email for Marine Coordinator	<a href="mailto:seagreenmarinecoordination@sse.com">seagreenmarinecoordination@sse.com</a>
Address	Seagreen Wind Energy Ltd, O&M Building, Windy Waves House, South Quay Ferryden, Montrose, Angus DD10 9SL

## 2. Operations & Maintenance activities


Operations and Maintenance activities are ongoing. The Service Operation Vessel (SOV) Brint Enabler will provide accommodation with personnel utilising a walk to work gangway system to access the WTG structures for work activities. The CTV MO9 will support operations.


Vessel – Brint Enabler.	Contact Details	
	Call Sign	LALG8
	MMSI	257967000
	Length	82.0m
	Beam	18.5m
	Draft	4.9m

Vessel – MO9	Contact Details	
	Call Sign	MNXA2
	MMSI	232048583
	Length	26.0m
	Beam	11.0m
	Draft	2.7m

## 3. Offshore Substation Platform Works


Seagreen Wind Energy Ltd have commenced a programme of works on the Seagreen Offshore Sub-station platform. The Service Operation Vessel (SOV) Norwind Storm will provide accommodation with personnel utilising a walk to work gangway system to access the OSP structure. The CTV HST Brighton shall support operations.

Vessel – Norwind Storm	Contact Details	
	Call Sign	LAPL8
	MMSI	257584000
	Length	88.7m
	Beam	19.5m
	Draft	5.2m

Vessel – HST/Purus Brighton	Contact Details	
	Call Sign	MPTU2
	MMSI	232056674
	Length	27.0m
	Beam	11.0m
	Draft	2.3m

#### 4. Guard Vessel Deployment.

Seagreen Wind Energy have deployed a site Guard Vessel. Six hourly VHF radio broadcasts shall be made containing information regarding the Seagreen development including work activities, safety zone information and site demarcation buoyage information. Vessel details below.

Vessel – GV Reaper	Contact Details	
	Call Sign	MFIX5
	MMSI	232022358
	Length	24m
	Beam	6m
	Draft	3m

#### Safety Zones

#### 5.

As all the Seagreen Wind Turbine Generators are fully commissioned, mandatory 500m safety zones shall be established around any WTG where major maintenance work is being undertaken, where major maintenance

is as per the definition given in the 2007 Regulations. The safety zones will be active whenever a major maintenance vessel is at the WTG during the operational phase. Up to five of these safety zones could be concurrently active, but no more than four where there is one active 500m safety zone around the Offshore Sub-station Platform.

A mandatory 500m safety zone shall be established around the Offshore Sub-station Platform where major maintenance work is being undertaken, where major maintenance is as per the definition given in the 2007 Regulations. The safety zone will be active whenever a major maintenance vessel is at the OSP during the operational phase.

## 6. Website

The official website for Seagreen Offshore Wind Farm can be found at

<https://seagreenwindenergy.com>

This contains all Seagreen Weekly Notices of Operations and Notices to Mariners, together with a large amount of general information about the project.

There is also a Twitter feed at [@seagreenwind](#)

## 7. Distribution List

A central list of recipients is maintained by Seagreen Marine Coordination, if you are not the appropriate recipient or do not wish to receive these notices, please contact Marine Coordination as per the details in section 1 of this notice.

This document contains proprietary information belonging to Seagreen Wind Energy Ltd or affiliated companies and shall be used only for the purpose for which it was supplied. It shall not be copied, reproduced, disclosed or otherwise used, nor shall such information be furnished in whole or in part to third parties, except in accordance with the terms of any agreement under which it was supplied or with the prior consent of Seagreen Wind Energy Ltd and shall be returned upon request. © Copyright of Seagreen Wind Energy Ltd.

## 8. Seagreen weekly vessel report.






Seagreen Offshore Windfarm  
Vessels & Operators

10.03.25

Reference to Marine Licence  
Conditions 3.1.2 (OWF Alpha and  
Bravo ML), 3.1.2 (OTA ML) and  
3.1.2 (Open Cut at Landfall ML)



Vessel Data Matrix OWF/OTA/Open Cut at Landfall

No	Vessel Picture	Vessel Name / Flag	Type / Function	Operator	Contact / contact details	Call sign / MMSI / IMO	LOA (m) Beam (m) Draft	Date on Site	Marine Licence(s) applicable
1		Brint Enabler	Service Operations Vessel	Vestas	Seagreen Marine Coordination +44 (0) 1674 689401	LALG8 257967000	82m x 18m	04.04.24	N/A
2		MO9	Crew Transfer Vessel	Vestas	Seagreen Marine Coordination +44 (0) 1674 689401	MNXA2 232048583	26m x 11m	02.12.23	N/A
3		GV Reaper	Guard Vessel	SWEL	Seagreen Marine Coordination +44 (0) 1674 689401	MFX5 232022358	24m x 6m	03.03.25	N/A
4		HST/Purus Brighton	Crew Transfer Vessel	SWEL	Seagreen Marine Coordination +44 (0) 1674 689401	MPTU2 232056674	27m x 11m	03.03.25	N/A
3		Norwind Storm	Service Operations Vessel	SWEL	Seagreen Marine Coordination +44 (0) 1674 689401	LAPL8 257584000	89m x 20m	03.03.25	N/A