

# NOTICE TO MARINERS



## Notice of activities on Seagreen Offshore Wind Farm

Date of Issue	<b>07/05/2024</b>	Notice Number	<b>07/2024 Revision 1</b>
---------------	-------------------	---------------	---------------------------

### Seagreen Offshore Wind Farm – Inter Array Cable Trawl Sweep Revision 1.

#### Contact Details for Marine Coordination and Fisheries Liaison

The following contact can provide more information if required:

Telephone Number, 24/7	+44 (0) 1674 689401
Duty Marine Coordinator	seagreenmarinecoordination@sse.com
Address	Seagreen Wind Energy Ltd, Windy Waves House Montrose Port Authority, South Quay Ferryden, Montrose, Angus DD10 9SL.

Fisheries liaison is coordinated by Brown and May Marine Ltd. For all fisheries enquiries, John Watt is primary contact:

Telephone Number	+44 (0) 1379872144
Mobile number	+44 (0) 7590 880746
Email	John.Watt@brownmay.com
Address	Brown and May Marine Progress Way Mid Suffolk Business Park Eye, Suffolk IP23 7HU

#### 1. Area of Planned Activity.

The Scottish Fishing Federation intend to conduct trawl sweep tests over a selection of the inter-array cables in the Western section of the Seagreen Offshore Wind Farm.

# NOTICE TO MARINERS



## 2. Activity Description

The Scottish Fishermen’s Federation will conduct trawl sweep tests in the Western portion of the Seagreen Offshore Wind Farm. The purpose of the trawl sweep is to meet consent requirements to re-open the site to normal fishing operations in an area where rock protection has been used following laying of the Seagreen Offshore Windfarm Inter Array Cables. The proposed over trawl is expected to comprise trawl tows across various Inter Array Cables at the West side of the windfarm site where squid fishing previously took place.

The expected sequence of trawl tows is shown below in table 1 and fig 1.

The SFF Fishing Vessel Westro, PD20, is expected to arrive at the Western section of the Seagreen site on or around the 6<sup>th</sup> of May to commence the tests. The trials will be conducted no closer than 250 metres from any turbine. The tests will be completed within 7 days.

Vessel and fishing gear arrangements are shown below.

All other vessels are requested to give the Westro a wide berth when engaged in trawl sweep tests.

Trawl Test Sequence	
1. SN-N03 to SN-N06	2. SN-N06 to SN-N08
3. SN-M01 to SN-L02	4. SN-L02 to SN-K04
5. SN-K04 to SN-L06	6. SN-L06 to SN-J07
7. SN-J07 to SN-K08	8. SN-H05 to SN-G06
9. SN-J08 to SN-J09	10. SN-J09 to SNJ11

Table 1 – Trawl Sweep Locations

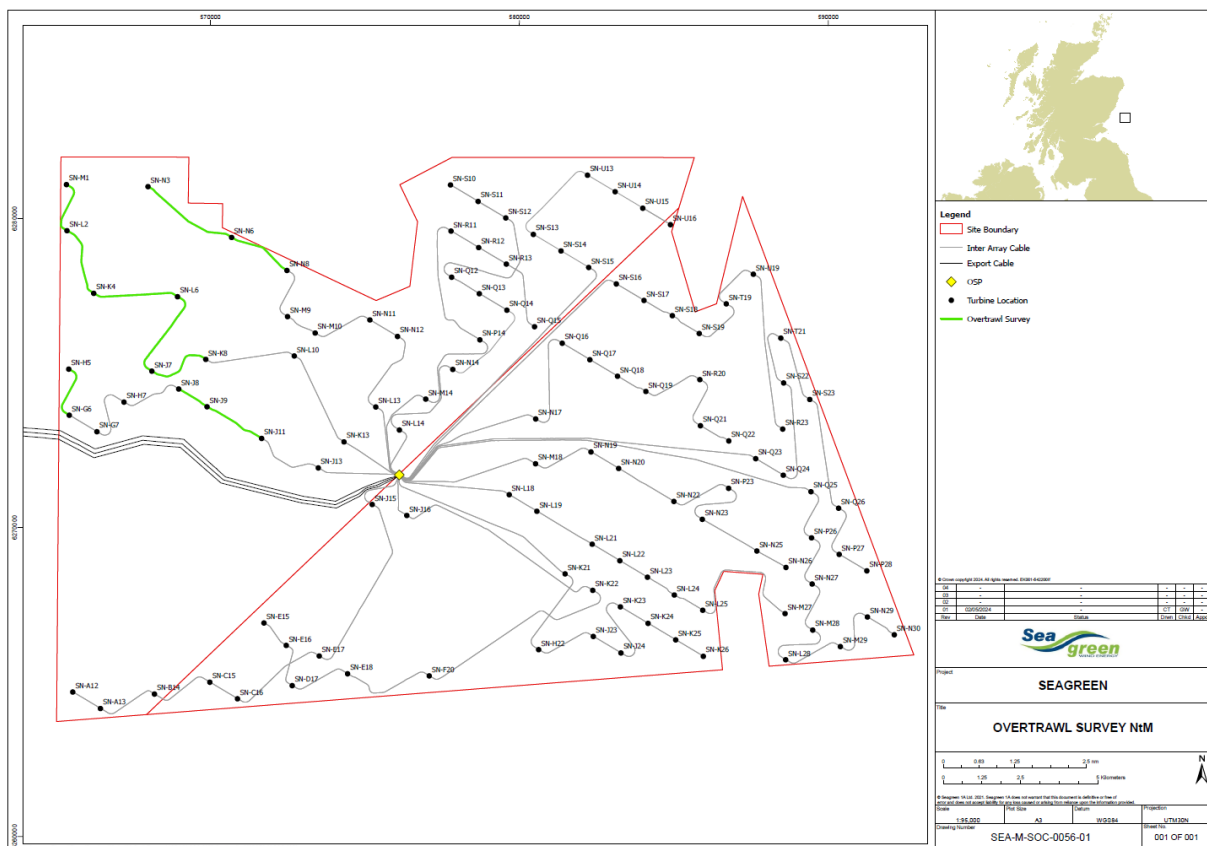


Fig 1 – Trawl Sweep test locations highlighted in green.

# NOTICE TO MARINERS

### 3. Fishing Gear Information

The squid fishing gear to be used in the trial is listed and shown below in fig 2.

- 150m of trawl warp
- 1 set of trawl otter boards, which would be ~600kg each
- 1 set of 13mm chain bridles @ 40m in length
- 1 squid trawl set on 18m of 400mm rock hopper ground gear

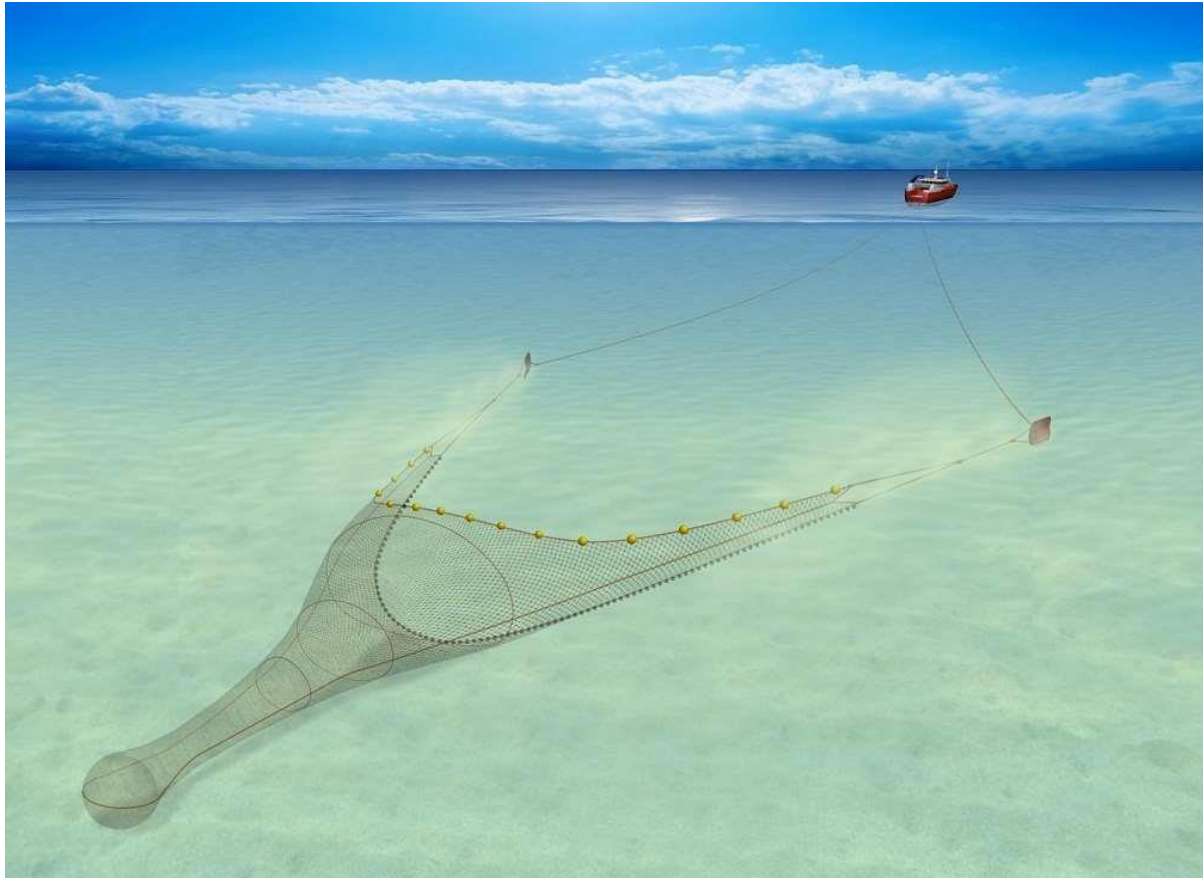


Fig 2 – Typical squid fishing gear

### 4. Vessel Details

Vessel – Westro PD20		Contact Details		
	Call Sign	MEIH8		
	MMSI	232019367		
	Vessel Details			
	Length	22.0m		
	Beam	7.0m		
	Draft	4.2m		

# NOTICE TO MARINERS



	Vessel Contact	Graeme.watters@sse.com
--	----------------	------------------------

## 5. Safety Zones

As all the Seagreen Wind Turbine Generators are fully commissioned, mandatory 500m safety zones shall be established around any WTG where major maintenance work is being undertaken, where major maintenance is as per the definition given in the 2007 Regulations. The safety zones will be active whenever a major maintenance vessel is at the WTG during the operational phase. Up to five of these safety zones could be concurrently active, but no more than four where there is one active 500m safety zone around the Offshore Sub-station Platform.

A mandatory 500m safety zone shall be established around the Offshore Sub-station Platform where major maintenance work is being undertaken, where major maintenance is as per the definition given in the 2007 Regulations. The safety zone will be active whenever a major maintenance vessel is at the OSP during the operational phase.

**MARINERS ARE REMINDED** to navigate with caution and keep continued watch on VHF Ch.70/16 when navigating the area.

## 6. Distribution List

A central list of recipients is maintained by the Marine Coordinator; if you are not the appropriate recipient of these notices, or do not wish to receive the notices in the future, please contact us at the address included in Section 1 of this notice.