

NOTICE TO MARINERS



Notice of activities on Seagreen Offshore Wind Farm

Date of Issue	12/12/2022	Notice Number	23/2022
---------------	------------	---------------	---------

Seagreen Offshore Wind Farm – UXO Identification survey & Boulder Clearance works.

Contact Details for Marine Coordination and Fisheries Liaison

The following contact can provide more information if required:

Telephone Number, 24/7	+44 (0) 333 344 5255
Duty Marine Coordinator	seagreenmarinecoordination@sse.com
Address	Seagreen Wind Energy Ltd, Windy Waves House Montrose Port Authority, South Quay Ferryden, Montrose, Angus DD10 9SL.

Fisheries liaison is coordinated by Brown and May Marine Ltd. For all fisheries enquiries, Willie Watt is primary contact:

Telephone Number	+44 (0) 1379872144
Mobile number	+44 (0) 7897 691860
Email	Willie.Watt@Brownmay.com
Address	Brown and May Marine Progress Way Mid Suffolk Business Park Eye, Suffolk IP23 7HU

1. Area of Planned Activity.

On behalf of Seagreen Wind Energy Ltd. Seaway 7 will conduct UXO identification geophysical survey and boulder clearance operations within the Seagreen site boundary. The site boundary, including coordinates is shown in table 1 and fig 1.

ID	Latitude (DDM WGS 84)	Longitude (DDM WGS 84)
01	56° 40.631' N	1° 43.829' W
02	56° 40.606' N	1° 36.151' W
03	56° 39.317' N	1° 36.884' W
04	56° 37.913' N	1° 36.151' W

NOTICE TO MARINERS



ID	Latitude (DDM WGS 84)	Longitude (DDM WGS 84)
05	56° 39.923' N	1° 34.627' W
06	56° 31.903' N	1° 29.311' W
07	56° 31.724' N	1° 33.882' W
08	56° 32.983' N	1° 34.195' W
09	56° 33.051' N	1° 35.583' W
10	56° 31.666' N	1° 35.352' W
11	56° 30.803' N	1° 56.378' W
12	56° 40.653' N	1° 56.226' W
13	56° 40.648' N	1° 52.170' W
14	56° 39.836' N	1° 51.101' W
15	56° 38.138' N	1° 46.249' W
16	56° 38.383' N	1° 45.181' W
17	56° 40.157' N	1° 45.487' W

Table 1 – Site boundary coordinates.

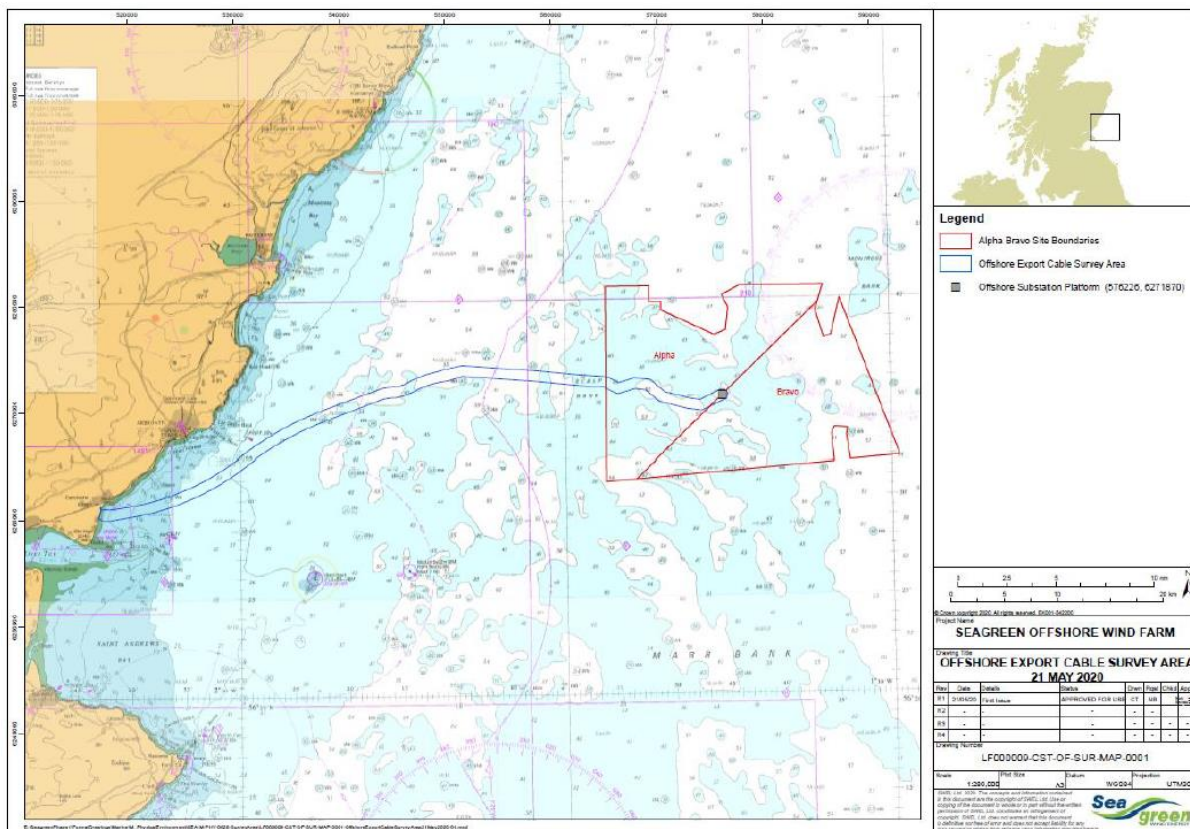


Fig 1 – Site boundary.


2. Activity Description

On behalf of Seagreen Wind Energy Ltd, Seaway 7 will conduct a geophysical survey for unexploded ordnance identification and boulder clearance operations within the Seagreen Offshore Windfarm site boundary. The Survey Vessel Go Electra is expected to arrive at site on or around the 14th of December to commence survey operations.

During the survey hull mounted and towed underwater instrumentation will be deployed.

NOTICE TO MARINERS

3. Vessel Details

Vessel – Go Electra	Contact Details	
	Call Sign	V7ZR6
	MMSI	538005197
	Vessel Details	
	Length	79.67m
	Beam	16.4m
	Draft	5.6m
	Vessel Contact	George Cooper George.cooper@seaway7.com

4. Safety Zones

Following consideration by Scottish government ministers it has been agreed that during the construction phases of the Seagreen development mandatory rolling 500m safety zones will be established around each Wind Turbine Generator and/or their foundations whilst construction works are in progress, as indicated by the presence of a construction vessel. The safety zones will be triggered whenever a vessel is on station at a WTG and undertaking construction activities.

In addition, mandatory pre commissioning 50m safety zones will be established around each Wind Turbine Generator and/or their foundations when construction works have been completed but prior to Wind Farm commissioning or where construction works have only been partially completed. These safety zones will be active at any structure during the construction phase where a construction vessel is not present at a Wind Turbine Generator.

MARINERS ARE REMINDED to navigate with caution and keep continued watch on VHF Ch.70/16 when navigating the area.

5. Distribution List

A central list of recipients is maintained by the Marine Coordinator; if you are not the appropriate recipient of these notices, or do not wish to receive the notices in the future, please contact us at the address included in Section 1 of this notice.