

NOTICE TO MARINERS



Notice of activities on Seagreen Offshore Wind Farm

Date of Issue	31/01/2024	Notice Number	03/2024 Rev 1
---------------	------------	---------------	---------------

Seagreen Offshore Wind Farm – Maintenance of Acoustic Monitoring Devices & Seabed Frame Removal – Revision 1

Contact Details for Marine Coordination and Fisheries Liaison

The following contact can provide more information if required:

Telephone Number, 24/7	+44 (0) 333 344 5255
Duty Marine Coordinator	seagreenmarinecoordination@sse.com
Address	Seagreen Wind Energy Ltd, Windy Waves House, Montrose Port Authority, South Quay Ferryden, Montrose, Angus DD10 9SL.

Fisheries liaison is coordinated by Brown and May Marine Ltd. For all fisheries enquiries, John Watt is primary contact:

Telephone Number	+44 (0) 1379872144
Mobile number	+44 (0) 7590 880746
Email	John.Watt@Brownmay.com
Address	Brown and May Marine Progress Way Mid Suffolk Business Park Eye, Suffolk IP23 7HU

1. Area of Planned Activity.

Maintenance works will be conducted on the five acoustic monitoring devices located in and around the Seagreen Offshore Wind Farm site, coordinates are below in table 1 and shown in Fig 1.

In addition, survey equipment will be removed from the seabed within the Seagreen site boundary, location and coordinates shown below in table 2 and fig 2.

NOTICE TO MARINERS



On behalf of Marine Scotland Science, the vessel Green Quest will conduct these works on or around the 1st of February. Works within the Seagreen site boundary are expected to be completed within 24-48 hours, vessel details shown below.

ID	Latitude (DDM WGS 84)	Longitude (DDM WGS 84)
Seagreen 01	56° 45.738' N	002° 21.270' W
Seagreen 02	56° 42.950' N	002° 10.963' W
Seagreen 03	56° 39.669' N	002° 00.564' W
Seagreen 04	56° 36.599' N	001° 50.163' W
Seagreen 05	56° 33.281' N	001° 40.039' W

Table 1 – Seagreen acoustic device coordinates.

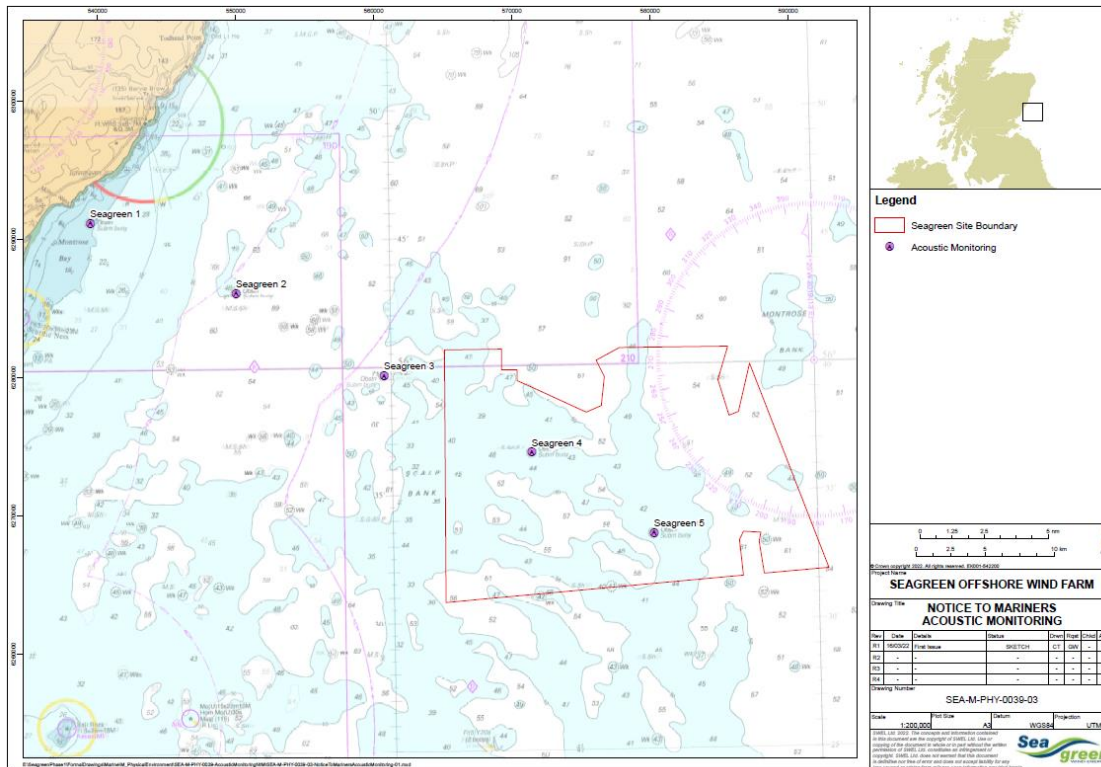


Fig 1 – Seagreen acoustic devices locations

ID	Latitude (DDM WGS 84)	Longitude (DDM WGS 84)
Seabed Frame	56° 32.537' N	001° 30.808' W
Acoustic recovery system	56° 32.478' N	001° 30.882' W

Table 2 – Survey item coordinates

NOTICE TO MARINERS

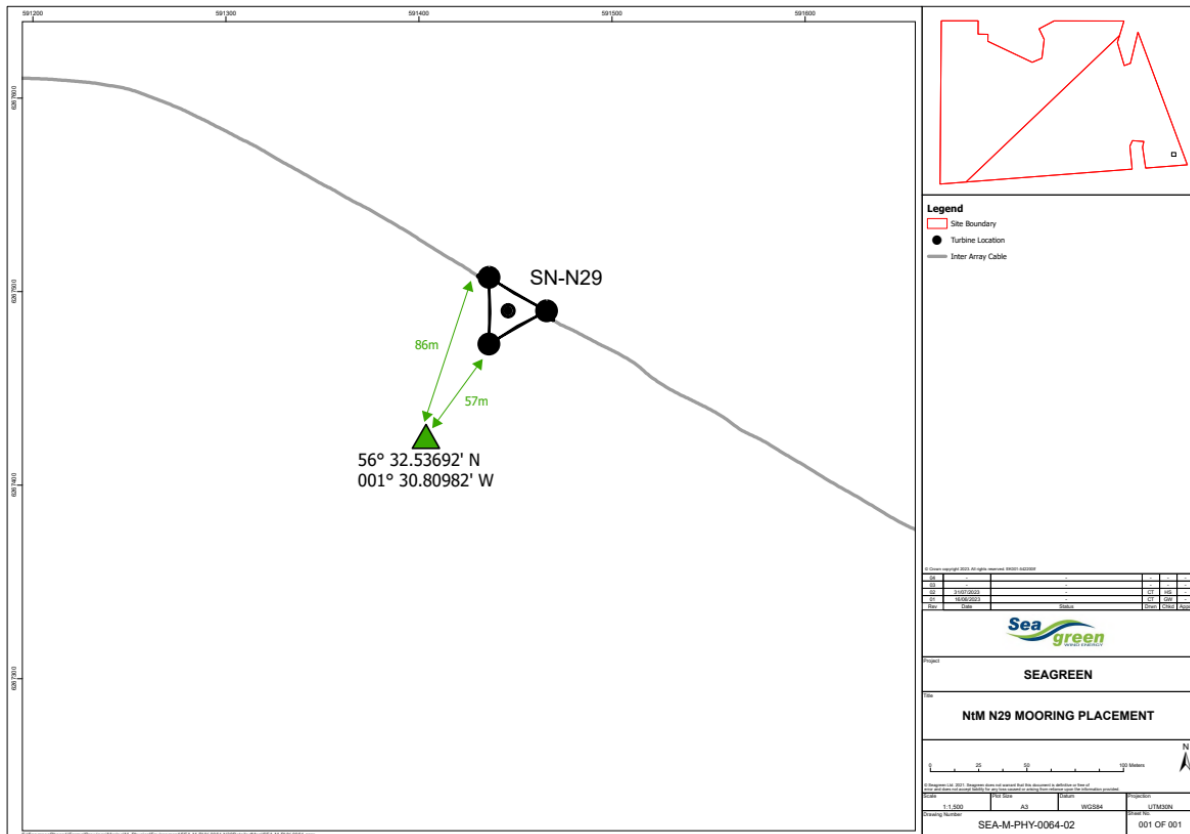



Fig 2 – Seabed frame locations and coordinates.

2. Vessel Details

Vessel – Green Quest	Contact Details	
	Call Sign	2DYY8
	MMSI	235083117
	Vessel Details	
	Length	16.0m
	Beam	6.0m
	Draft	1.4m
	Vessel Contact	Graeme.watters@sse.com

3. Safety Zones

As all the Seagreen Wind Turbine Generators are fully commissioned, mandatory 500m safety zones shall be established around any WTG where major maintenance work is being undertaken, where major

NOTICE TO MARINERS



maintenance is as per the definition given in the 2007 Regulations. The safety zones will be active whenever a major maintenance vessel is at the WTG during the operational phase. Up to five of these safety zones could be concurrently active, but no more than four where there is one active 500m safety zone around the Offshore Sub-station Platform.

A mandatory 500m safety zone shall be established around the Offshore Sub-station Platform where major maintenance work is being undertaken, where major maintenance is as per the definition given in the 2007 Regulations. The safety zone will be active whenever a major maintenance vessel is at the OSP during the operational phase.

MARINERS ARE REMINDED to navigate with caution and keep continued watch on VHF Ch.70/16 when navigating the area.

4. Distribution List

A central list of recipients is maintained by the Marine Coordinator; if you are not the appropriate recipient of these notices, or do not wish to receive the notices in the future, please contact us at the address included in Section 1 of this notice.