

# NOTICE TO MARINERS



## Notice of activities on Seagreen Offshore Wind Farm

Date of Issue	16/07/2024	Notice Number	12/2024 Rev 2
---------------	------------	---------------	---------------

### Seagreen Offshore Wind Farm – Subsea Asset Survey Operations Revision 2.

#### Contact Details for Marine Coordination and Fisheries Liaison

The following contact can provide more information if required:

Telephone Number, 24/7	+44 (0) 1674 689401
Duty Marine Coordinator	seagreenmarinecoordination@sse.com
Address	Seagreen Wind Energy Ltd, Windy Waves House, Montrose Port Authority, South Quay Ferryden, Montrose, Angus DD10 9SL.

Fisheries liaison is coordinated by Brown and May Marine Ltd. For all fisheries enquiries, John Watt is primary contact:

Telephone Number	+44 (0) 1379872144
Mobile number	+44 (0) 7590 880746
Email	John.Watt@Brownmay.com
Address	Brown and May Marine Progress Way Mid Suffolk Business Park Eye, Suffolk IP23 7HU

#### 1. Area of Planned Activity.

Seagreen Wind Energy Ltd. will conduct a subsea asset survey of the Seagreen export cables and within the boundary of the Seagreen wind farm.

# NOTICE TO MARINERS

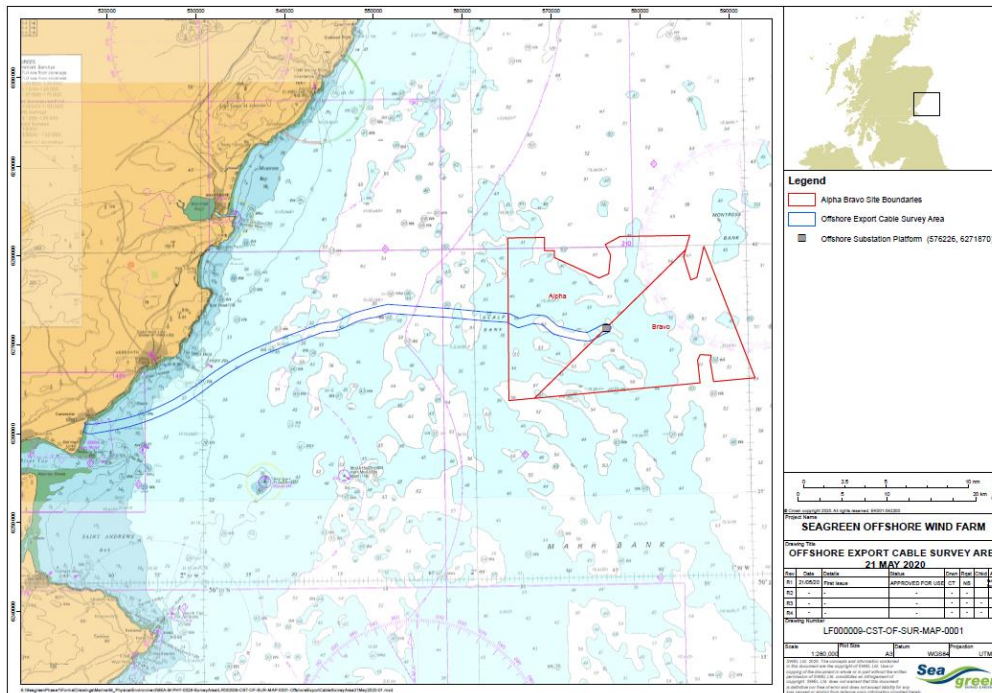


Fig 1 – Seagreen site boundary including export cable corridor.

## 2. Activity description.

Seagreen Wind Energy Ltd. will conduct a subsea asset survey within the Seagreen offshore windfarm site boundary and export cable corridor.

Survey activity will include WTG jacket foundation survey, Offshore Sub-station foundation survey, inter array cable burial survey and export cables survey.

The survey vessel Glomar Worker will continue works within the Seagreen site during the coming weeks. Vessel details below.

Survey data collection works will be supplemented using unmanned Autonomous Surface Vessels (ASV). There may be multiple ASV's working concurrently within the site boundary. An example is shown below.

Two unmanned autonomous vessels will arrive at the Seagreen site this evening, Tuesday the 16<sup>th</sup> of July.

Unmanned vessel X-19 shall survey around the WTG foundations and inter array cable routes, X-29 shall survey the three export cable routes.


The only means of direct VHF communications with these vessels is on VHF channel 16.

**If any Seagreen project vessels require to interface with the USV's they should contact the Duty Marine Coordinator at Seagreen Traffic on VHF Private Channel 1.**

# NOTICE TO MARINERS




### 3. Vessel Details

Vessel – Glomar Worker		Contact Details		
	Call Sign	3EKK8		
	MMSI	232110000		
	Vessel Details			
	Length	60.0m		
	Beam	15.5m		
	Draft	5.4m		
	Vessel Contact	<a href="mailto:Graeme.watters@sse.com">Graeme.watters@sse.com</a>		

### 4. Autonomous Surface Vessels.

Below is an example of an Autonomous Surface Vessel (ASV) including MMSI details and dimensions.

Vessel – X-04		Contact Details		
	Call Sign			
	MMSI	As below table.		
	Vessel Details			
	Length	4.5m		
	Beam	2.2m		
	Vessel Contact	<a href="mailto:Graeme.watters@sse.com">Graeme.watters@sse.com</a>		

Name:	X-19 UNCREWED	X-29 UNCREWED
MMSI:	232039416	232053990
Length:	4.5m	4.5m
Beam:	2.2m	2.2m
Speed:	3.5kts	3.5kts
Draught:	1.5m	1.5m
Tonnage:	750kg	750kg

# NOTICE TO MARINERS



## 5. Safety Zones

As all the Seagreen Wind Turbine Generators are fully commissioned, mandatory 500m safety zones shall be established around any WTG where major maintenance work is being undertaken, where major maintenance is as per the definition given in the 2007 Regulations. The safety zones will be active whenever a major maintenance vessel is at the WTG during the operational phase. Up to five of these safety zones could be concurrently active, but no more than four where there is one active 500m safety zone around the Offshore Sub-station Platform.

A mandatory 500m safety zone shall be established around the Offshore Sub-station Platform where major maintenance work is being undertaken, where major maintenance is as per the definition given in the 2007 Regulations. The safety zone will be active whenever a major maintenance vessel is at the OSP during the operational phase.

**MARINERS ARE REMINDED** to navigate with caution and keep continued watch on VHF Ch.70/16 when navigating the area.

## 6. Distribution List

A central list of recipients is maintained by the Marine Coordinator; if you are not the appropriate recipient of these notices, or do not wish to receive the notices in the future, please contact us at the address included in Section 1 of this notice.