

NOTICE TO MARINERS



Notice of Survey activities on Seagreen Offshore Wind Farm

Date of Issue	04/04/2025	Notice Number	03/25
---------------	------------	---------------	-------

Seagreen Offshore Wind Farm – Uncrewed Surface Vessel (USV) Hydrographic survey

Contact Details for Marine Coordination and Fisheries Liaison

The following contact can provide more information if required:

Telephone Number, 24/7	+44 (0) 1674 689401
Duty Marine Coordinator	seagreenmarinecoordination@sse.com
Address	Seagreen Wind Energy Ltd, Windy Waves House Montrose Port Authority, South Quay Ferryden, Montrose, Angus DD10 9SL.

Fisheries liaison is coordinated by Brown and May Marine Ltd. For all fisheries enquiries, John Watt is primary contact:

Telephone Number	+44 (0) 1379872144
Mobile number	+44 (0) 7590 880746
Email	John.Watt@Brownmay.com
Address	Brown and May Marine Progress Way Mid Suffolk Business Park Eye, Suffolk IP23 7HU

1. Area of Planned Activity.

Seagreen Wind Energy Ltd. will conduct a subsea hydrographic survey within the Seagreen offshore windfarm site boundary

NOTICE TO MARINERS

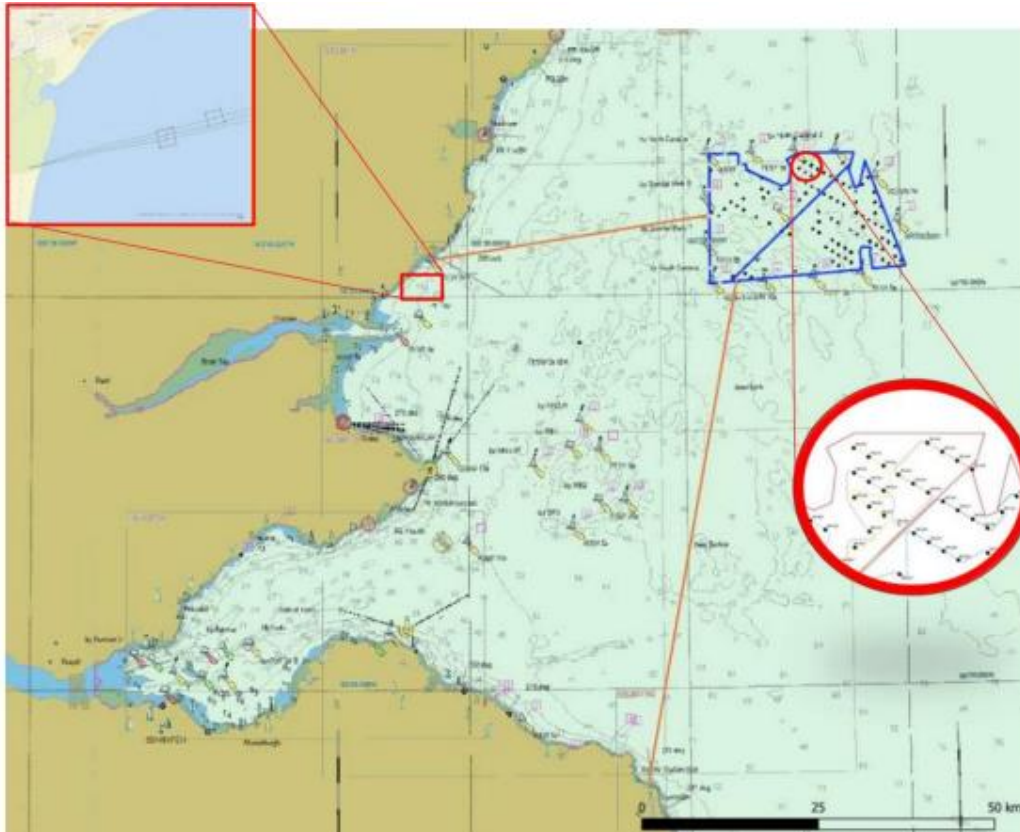


Fig 1 – Survey area & indicative Transit routes

ID	Latitude (DDM WGS 84)	Longitude (DDM WGS 84)
WTG SN-S11	56° 39.859' N	001° 43.008' W
WTG SN-G07	56° 35.859' N	001° 55.094' W

Table 1 SN-S11 and SN-G07 coordinates

2. Activity Description

Unmanned vessel X-15 or X16. shall survey around the WTG foundations of SN -S11 and SN-G07


Operations will take place subject to weather and other operational factors from 14th April for approximately 7 days. In addition to the survey area, the USVs will transit to/from the port of Eyemouth or Arbroath. A support vessel will escort the USV from the harbour entrance until open water. The USV will then continue transiting towards the survey site. It is requested that other vessels remain clear, so far as is practicable, during transit & survey operations.

The only means of direct VHF communications with the vessel is on VHF channel 16.

If any Seagreen project vessels require to interface with the USV's they should contact the Duty Marine Coordinator at Seagreen Traffic on VHF Private Channel P1

NOTICE TO MARINERS

3. Vessel Details

Vessel – TBC		Contact Details		
	Call Sign	n/a		
	MMSI	As below table		
	Vessel Details			
	Length	4.5m		
	Beam	2.2m		
	Draught	1.5		
	Vessel Contact	seagreenmarinecoordination@sse.com		

Name:	X-16 UNCREWED	X-19 UNCREWED	X-22 UNCREWED	X-23 UNCREWED	X-26 UNCREWED	X-27 UNCREWED
MMSI:	232039413	232039416	232044014	232044015	232052508	232053292
Length:	4.5m	4.5m	4.5m	4.5m	4.5m	4.5m
Beam:	2.2m	2.2m	2.2m	2.2m	2.2m	2.2m
Speed:	3.5kts	3.5kts	3.5kts	3.5kts	3.5kts	3.5kts
Draught:	1.5m	1.5m	1.5m	1.5m	1.5m	1.5m
Tonnage:	750kg	750kg	750kg	750kg	750kg	750kg

4. Safety Zones

As all the Seagreen Wind Turbine Generators are fully commissioned, mandatory 500m safety zones shall be established around any WTG where major maintenance work is being undertaken, where major maintenance is as per the definition given in the 2007 Regulations. The safety zones will be active whenever a major maintenance vessel is at the WTG during the operational phase. Up to five of these safety zones could be concurrently active, but no more than four where there is one active 500m safety zone around the Offshore Sub-station Platform.

A mandatory 500m safety zone shall be established around the Offshore Sub-station Platform where major maintenance work is being undertaken, where major maintenance is as per the definition given in the 2007 Regulations. The safety zone will be active whenever a major maintenance vessel is at the OSP during the operational phase.

MARINERS ARE REMINDED to navigate with caution and keep continued watch on VHF Ch.70/16 when navigating the area.

NOTICE TO MARINERS



5. Distribution List

A central list of recipients is maintained by the Marine Coordinator; if you are not the appropriate recipient of these notices, or do not wish to receive the notices in the future, please contact us at the address included in Section 1 of this notice.